

ANCAP Safety Rating: MITSUBISHI LANCER (November 2015 - onwards)



Frontal offset test at 64km/h

This ANCAP safety rating applies to:

Make / Model	Mitsubishi Lancer
Year Range	November 2015 - onwards
Variants(s)*	All variants (sedan & hatch)
Vehicle Type	Small Car

The 2016 model-year Lancer was introduced in December 2015. This ANCAP rating is based on crash tests conducted by ANCAP in 2008. It applies to all variants.

Dual frontal, side chest and side head airbags (curtains) and a driver knee airbag are standard. Antilock brakes (ABS), electronic brake distribution (EBD) and electronic stability control (ESC) are also standard. Advanced seat belt reminders are fitted to both front seats.

In the offset crash test driver and passenger chest protection was acceptable. In the side impact crash test driver chest protection was marginal. Head protection in the side pole test was good.

Injury Outcomes.

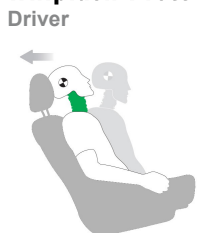
Frontal Offset



Side Impact & Pole*



Whiplash Protection



* Head protection only.

Test Results Summary.

Airbags	Dual Frontal, Side, Head, Knee
Frontal Offset Test	15.56 (out of 16)
Side Impact Test	14.00 (out of 16)
Pole Test	2 (out of 2)
Whiplash Protection	Good
Pedestrian Protection	Marginal
ESC	Standard
Seat Belt Reminders	2.0 (out of 3)
Overall Score	33.56 (out of 37)
ANCAP Safety Rating	★★★★★
Rating Year[^]	2013

Occupant Protection.

Frontal Offset Test

Each body region is scored out of 4 points

Head / neck:	4.00 points
Chest:	3.56 points
Upper legs:	4.00 points
Lower legs:	4.00 points

The passenger compartment held its shape well in the offset test. Pedal and steering wheel displacements were well controlled. Driver and passenger contact with the airbags was stable. The knee airbag protected the driver's knees from the risk of additional injury. All doors remained closed during the crash. After the crash all doors could be opened with normal effort.

Side Impact Test

Each body region is scored out of 4 points

Head:	4.00 points
Chest:	2.00 points
Abdomen:	4.00 points
Pelvis:	4.00 points

Chest protection was marginal for the driver in the side impact test. All injury measurements were good but the chest score was reduced due to unrealistic loading of the dummy's spine.

Pole Test

Scored out of 2 points

Score:	2.00 points
--------	-------------

The vehicle was eligible for a side pole test because it has side curtain airbags. The vehicle scored the maximum 2 points for head protection in this test.

Whiplash Protection Test

Whiplash protection is assessed to the RCAR Protocol

Geometric test:	Good
Dynamic test:	Good
Overall whiplash rating:	Good

ANCAP Safety Rating: MITSUBISHI LANCER (November 2015 - onwards)



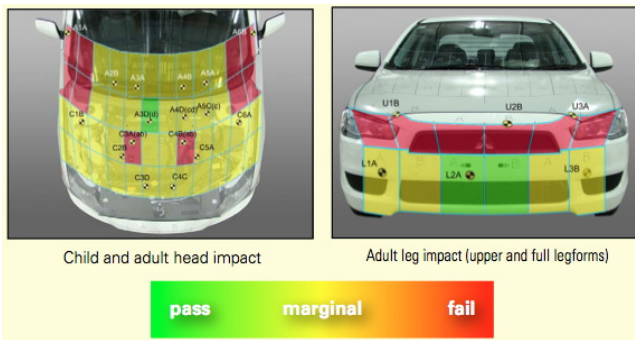
Pedestrian Protection.

Pedestrian Test

Scored out of 36 points

Adult & child head impacts: 10.18 points
Upper leg impacts: 0.00 points
Lower leg impacts: 5.44 points

This vehicle scored 15.62 out of 36 points (Marginal). The majority of adult and child head impacts scored partial points. The vehicle received zero points for the upper leg tests, and performed fairly well in the full leg to bumper tests. (v5)



Score Deductions.

Deductions from frontal offset test scores

Head / neck: No deductions
Chest: No deductions
Upper legs: No deductions
Lower legs: No deductions

Deductions from side impact test score

Chest: Excessive T12 spine load: 2 points from chest score

Deductions from pole test score

Head: No deductions for pole test

Safety Features & Technologies.

Descriptions of each of these safety features and safety assist technologies (SAT) and detail on fitting requirements for each star rating level can be found at ancap.com.au.

Safety Feature / Safety Assist Technology	Availability
Seat belts (three-point) for all forward-facing seats	S
Seat belt pretensioners (front)	S
Seat belt pretensioners (rear outboard)	X
Intelligent seat belt reminder (driver)	S
Intelligent seat belt reminder (front passenger)	S
Intelligent seat belt reminder (2 nd row seats)	X
Airbag - Front (driver)	S
Airbag - Front (passenger)	S
Airbag - Side, chest protection (front seats)	S
Airbag - Side, chest protection (2 nd row seats)	X
Airbag - Side, head protection (front seats)	S
Airbag - Side, head protection (2 nd row seats)	S
Airbag - Knee (driver)	S
Airbag - Knee (front passenger)	X
Head restraints for all seats	S
Adaptive cruise control (ACC)	X
Antilock braking system (ABS)	S
Autonomous emergency braking (AEB)	X
Daytime running lights (DRL)	S
Electronic brakeforce distribution (EBD)	S
Electronic stability control (ESC)	S
Emergency brake assist (EBA)	S
Hill launch assist	V#
Lane support system (LSS)	X
Reversing collision avoidance	O
Tyre pressure monitoring system (TPMS)	X

These specifications are subject to change. Please check with the manufacturer for the latest specifications.

S = Standard on all variants.

O = Optional on base variant. May be standard on higher variants.

V = Not available on base variant but standard or optional on higher variants.

X = Not available on any variant.

E = Available in Europe / USA but not available on any Australasian variant.

Hill launch assist is standard on the base variant but is not available on some higher variants.

ANCAP Safety Rating: MITSUBISHI LANCER (November 2015 - onwards)



ANCAP

Safety ★★★★★



Injury Values & Measurements.

Body Region	Frontal offset test at 64 km/h (v5.1)		Side impact test at 50 km/h (v5.1)
	Driver	Passenger	Driver
Head			
HIC	233.00	329.00	17.00
Acceleration (g for 3ms)	39.80	42.00	17.60
Neck			
Shear (kN)	0.40	0.55	-
Tension (kN)	1.13	1.14	-
Extension (Nm)	19.10	14.60	-
Chest			
Acceleration (g for 3ms)	-	-	-
Compression (mm)	24.30	25.10	19.90
Viscous criterion (m/s)	0.11	0.08	0.14
Abdomen			
Force (kN)	-	-	0.35
Pelvis			
Force (kN)	-	-	1.81
Upper legs			
Femur force left (kN)	1.78	0.26	
Femur force right (kN)	0.98	0.85	
Knee displacement left (mm)	3.59	0.31	
Knee displacement right (mm)	2.35	1.41	
Lower legs			
Force left (kN)	1.56	1.27	
Force right (kN)	1.80	1.40	
Index (upper / lower) left	0.26 / 0.25	0.25 / 0.25	
Index (upper / lower) right	0.28 / 0.31	0.24 / 0.20	
Intrusion Measurements⁺			
Steering column			
Forward (mm)	10		
Upward (mm)	22		
Sideways (mm)	18		
Pedals			
Brake - rearward (mm)	82		
Clutch - upward (mm)	24		
A-Pillar			
Rearward (mm)	10		

+ Steering column and pedal movements are measured relative to the driver's seat.

* ANCAP safety ratings do not automatically extend to variants that have different body styles, engine configurations, driven wheels or occupant restraint systems (e.g. fewer airbags). In these cases, ANCAP considers technical evidence submitted by manufacturers before deciding on extending a rating to additional variants of a model. For further information about the application of ANCAP safety ratings to model variants, see the ANCAP Variant Policy.

^ The Rating Year denotes the year requirements against which a vehicle has been assessed. The Rating Year is determined by ANCAP and may be based on the year in which a new vehicle model is first launched into the Australian and/or New Zealand markets; the year in which the vehicle was tested (if tested by Euro NCAP); or, for vehicles which hold an existing ANCAP safety rating, the year in which the rating was updated (or earlier applicable year).

Assessment Details.

Tested Make / Model	Mitsubishi Lancer VR
Tested Vehicle(s) Built	2007
Tested Body Type	Sedan
Tested Vehicle Kerb Weight	1310 kg
Tested Vehicle Engine	2.0 petrol
Tested By	ANCAP
Assessed By	ANCAP
Document Reference	LANCER15
Rating Published	December 2015
Document created/revised	04 December 2015
Rating Updated	N/A

