

ANCAP Safety Rating MITSUBISHI LANCER (From 2013)



Test Vehicle(s).

Variant:	Mitsubishi Lancer VR sedan
Kerb Mass:	1310 kg
Built:	2007
Engine:	2.0 petrol
Category:	SMALL CAR
Variant Applicability*:	All variants (sedan & hatch)



Frontal offset test at 64 km/h

Airbags	ESC	Frontal Offset	Side Impact	Pole	Whiplash	Pedestrian	Seat Belt Reminders	Overall Score	ANCAP Safety Rating
Frontal + Side + Head + Knee	Standard	15.56 (out of 16)	14.00 (out of 16)	2.000 (out of 2)	GOOD	MARGINAL	2 (out of 3)	33.56 (out of 37)	★★★★★

The tested model of Mitsubishi Lancer was introduced in Australia and New Zealand in 2007. This ANCAP safety rating applies to all variants manufactured from January 2013, when 7 airbags became standard. See the ANCAP website for previous ratings.

Dual frontal, side chest and side head airbags (curtains) and a driver knee airbag are standard. Antilock brakes (ABS), electronic brake distribution (EBD) and electronic stability control (ESC) are also standard. Advanced seat belt reminders are fitted to both front seats.

In the offset crash test driver and passenger chest protection was acceptable. In the side impact crash test driver chest protection was marginal. Head protection in the side pole test was good.

OCCUPANT PROTECTION

Frontal Offset Test.

Each body region is scored out of 4 points

Head / neck:	4.00 points
Chest:	3.56 points
Upper legs:	4.00 points
Lower legs:	4.00 points

The passenger compartment held its shape well in the offset test. Pedal and steering wheel displacements were well controlled. Driver and passenger contact with the airbags was stable. The knee airbag protected the driver's knees from the risk of additional injury. All doors remained closed during the crash. After the crash all doors could be opened with normal effort.

Side Impact Test.

Each body region is scored out of 4 points

Head:	4.00 points
Chest:	2.00 points
Abdomen:	4.00 points
Pelvis:	4.00 points

Chest protection was marginal for the driver in the side impact test. All injury measurements were good but the chest score was reduced due to unrealistic loading of the dummy's spine.

Pole Test.

Scored out of 2 points

The vehicle was eligible for a side pole test because it has side curtain airbags. The vehicle scored the maximum 2 points for head protection in this test.

Whiplash Protection Test.

Whiplash protection is assessed to the RCAR Protocol

Geometric test:	GOOD
Dynamic test:	GOOD
Overall whiplash rating:	GOOD

Injury Outcomes.

Frontal Offset Driver

Passenger

Side Impact & Pole Driver



Whiplash



ANCAP Safety Rating MITSUBISHI LANCER (From 2013)



PEDESTRIAN PROTECTION

Pedestrian Test.

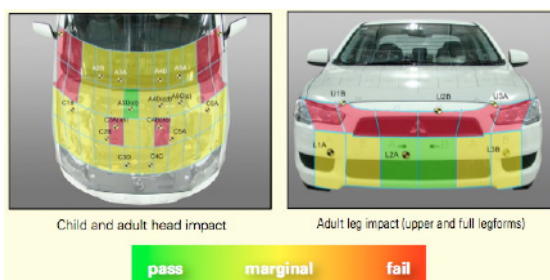
MARGINAL - Scored 15.620 out of 36 points

Child head impacts: 6.37 points
 Adult head impacts: 3.81 points
 Upper leg impacts: 0.00 points
 Lower leg impacts: 5.44 points

The majority of adult and child head impacts scored partial points. The vehicle received zero points for the upper leg tests, and performed fairly well in the full leg to bumper tests.



Mitsubishi Lancer



SAFETY FEATURES

These specifications are subject to change. Please check with manufacturer for the latest specifications. For a description of these safety features and safety rating requirements see the ANCAP Rating Road Map.

Safety Assist Technology (SAT)	Availability
Front airbag - driver	S
Front airbag - passenger	S
Side airbags (chest protection) - front seats	S
Side airbags (head protection) - front seats	S
Side airbags (head protection) - 2nd row seats	S
Knee airbag - driver	S
Three-point seat belts for all forward facing seats	S
Seat belt pretensioners (front / rear outboard)	S / X
Intelligent seat belt reminder - driver	S
Intelligent seat belt reminder - front passenger	S
Intelligent seat belt reminder - 2nd row seats	X
Head restraints for all seats	S
Antilock brakes (ABS)	S
Electronic brake distribution (EBD)	S
Emergency brake assist (EBA)	S
Electronic stability control (ESC)	S
Adaptive cruise control (ACC)	X
Autonomous emergency braking (AEB)	X
Lane support system	X
Hill launch assist	V
Reversing collision avoidance	O

S = Standard on all variants.
 O = Optional on base variant. May be standard on higher variants.
 V = Not available on base variant but standard or optional on higher variants.
 X = Not available on any variant.

INJURY MEASUREMENTS

Body Region	Frontal offset test at 64 km/h (v5.1)		Side impact test at 50 km/h (v5.1)
	Driver	Passenger	Driver
Head			
HIC	233.00	329.00	17.00
Acceleration (g for 3ms)	39.80	42.00	17.60
Neck			
Shear (kN)	0.40	0.55	-
Tension (kN)	1.13	1.14	-
Extension (Nm)	19.10	14.60	-
Chest			
Acceleration (g for 3ms)			-
Compression (mm)	24.30	25.10	19.90
Viscous criterion (m/s)	0.11	0.08	0.14
Abdomen			
Force (kN)	-	-	0.35
Pelvis			
Force (kN)	-	-	1.81
Upper legs			
Femur force left (kN)	1.78	0.26	
Femur force right (kN)	0.98	0.85	
Knee displacement left (mm)	3.59	0.31	
Knee displacement right (mm)	2.35	1.41	
Lower legs			
Force left (kN)	1.56	1.27	
Force right (kN)	1.80	1.40	
Index (upper / lower) left	0.26 / 0.25	0.25 / 0.25	
Index (upper / lower) right	0.28 / 0.31	0.24 / 0.20	

INTRUSION MEASUREMENTS

Steering Column

Forwards:	10mm
Upwards:	22mm
Sideways:	18mm

Pedals

Accelerator (rearwards):	82mm
Clutch (upwards):	24mm
A-Pillar (rearwards):	10mm

SCORE DEDUCTIONS

Deductions from frontal offset test scores

No deductions for offset test

Note: Steering column and pedal movements are measured relative to the driver's seat.

Deductions from side impact test score

Excessive T12 load: 2 point from chest score.

Deductions from pole test score

No deductions for pole test.

* For information about the application of ANCAP ratings to model variants see the ANCAP Variant Policy. In brief, ratings do not automatically extend to variants that have different body styles, engine configurations, driven wheels or occupant restraint systems (e.g. fewer airbags). In these cases ANCAP considers technical evidence submitted by manufacturers before deciding on extending a rating to additional variants of a model.

^ Refer ANCAP Rating Road Map (www.ancap.com.au/media).

DOCUMENT REF: LANCER13
 CREATED / REVISED: 16/9/2013