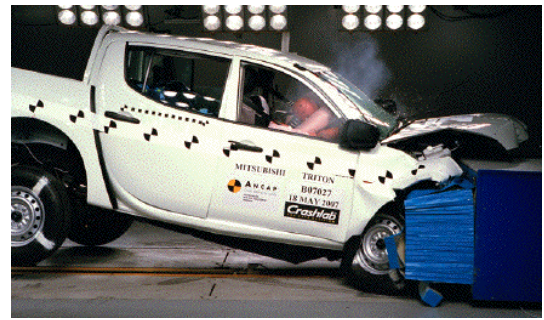


Crash Test Results

New Car Safety

MITSUBISHI CHALLENGER

2009 on Front+side+head airbags



Offset crash test at 64km/h (Triton utility)

FRONTAL OFFSET CRASH TEST (v4.1 Triton)

Body region scores out of 4 points each: Head/neck 4 pts, chest 1.87 pts, upper legs 0.99 pts, lower legs 2.22 pts.

The passenger compartment held its shape well in the offset crash test. The clutch pedal moved rearwards by 74 mm and downwards 3mm. The steering wheel hub moved forwards 16mm, upwards 49 mm and sideways 8 mm. The front ("A") pillar moved 53 mm rearwards. All doors remained closed during the crash. After the crash high manual effort was required to open the driver's door.

The airbag cushioned the head of the driver and contact was stable. Steering column components were a potential source of injury for the driver's knees. The passenger's head was cushioned by the airbag.

SIDE IMPACT CRASH TEST (v4.1 default)


Default 16 points awarded for side impact test.

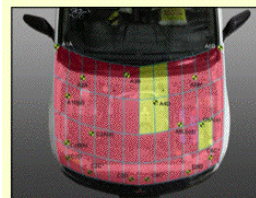
The side impact test normally used by ANCAP simulates a small car striking the driver's door of the vehicle under test. It is based on a regulation test but the regulation does not apply to vehicles with a high seat height like the Challenger. Experience shows that such vehicles can be expected to perform well in this test so ANCAP has decided to award full score for these vehicles instead of conducting a crash test.

ANCAP did not conduct a pole impact test because the offset test score was less than 12.5, the minimum needed for a 5-star rating and associated pole test.

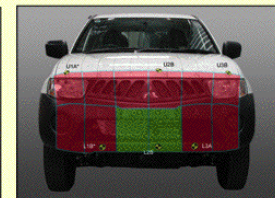
PEDESTRIAN PROTECTION RATING (v4.1)

This assessment is based on ANCAP's test of the Triton.

PEDESTRIAN PROTECTION		
 v4.1	Child head impacts	0.31
	Adult head impacts	0.96
	Upper leg impacts	Zero
	Lower leg impacts	2
	Total (out of 36)	3.27



Child and adult head impact



Adult leg impact (upper and full legforms)

fair marginal poor



Occupant Protection Score 25.08 out of 37

Tested variant: Triton utility Eng: 3.2 diesel

Kerb weight (Triton): 1930 kg Category: 4WD - LARGE

Tested vehicle built: 8/06

Model History and Safety Features

This rating is based on an ANCAP offset crash test of a Mitsubishi Triton utility in 2006. The Challenger is derived from the Triton and ANCAP was provided with evidence that the Challenger provides comparable occupant protection to that of the Triton in the offset crash test. The rating applies to all variants of the Challenger.

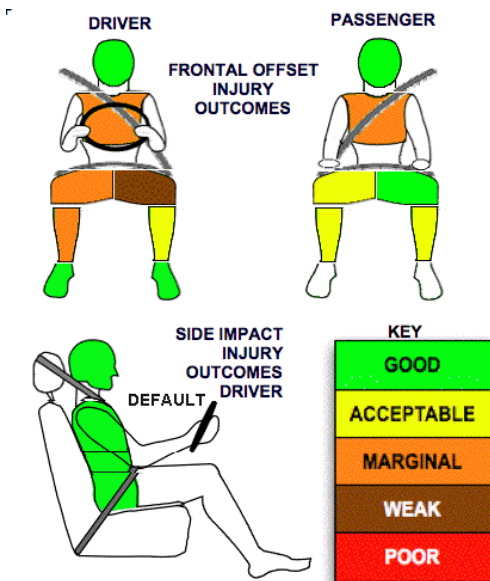
Dual front airbags, side airbags and head-protecting side curtains are standard equipment. Antilock brakes (ABS), electronic brake distribution (EBD) and electronic stability control (ESC) are also standard.

Pre-tensioners and force limiters are fitted to the front seat belts.

OCCUPANT PROTECTION: 4 Stars

The tested vehicle scored 9.08 out of 16 in the offset crash test. The passenger compartment held its shape well. Protection from serious leg injury was marginal for the driver. There was a moderate risk of serious chest injury for the driver and passenger.

The vehicle was awarded a default score of 16 out of 16 in the side impact crash test.



February 2010

PO Box 1555

Canberra ACT
Australia 2601

challenger09.doc

Issued 22/2/2010



www.ancap.com.au

TECHNICAL DATA - MITSUBISHI CHALLENGER - 2009 on

INJURY MEASUREMENTS (Mitsubishi Triton offset test results)

Body region	Offset Crash Test at 64km/h (Triton v4.1)		Side Impact Crash Test at 50km/h
	Driver	Passenger	Driver
Head HIC	426	409	Default Score awarded
Acceleration (g for 3ms)	48.4	49.6	
Neck - Shear (kN)	0.30	0.71	
Tension (kN)	1.72	1.78	
Extension (Nm)	20.5	15.2	
Chest Accln (g for 3ms)	44.800	36.800	
Compression (mm)	36.90	32.80	
Viscous criterion (m/s)	0.21	0.17	
Abdomen - Force (kN)	-	-	
Pelvis - Force (kN)	-	-	
Upper legs Force			
Left (kN)	1.94	0.56	
Right (kN)	0.88	3.76	
Knee displ (mm)			
Left	8.28	1.26	
Right	0.93	1.18	
Lower legs Force			
Left (kN)	2.47	3.30	
Right (kN)	3.61	3.05	
Index (Upper/Low)			
Left	0.42 /0.49	0.47 /0.19	
Right	0.67 /0.80	0.38/0.41	

Bonus points (maximum 5)

Pole Test: Not conducted

Seat belt reminders: None

Modifiers - deductions from offset test scores (Triton)

Head No deduction
 Chest No deduction
 Upper leg Variable & conc. loading 2 pt deduction Left & Right
 Lower leg No deduction
 Foot score Score 4 points

Note: Steering column and pedal movements are measured relative to the driver's seat.

Modifiers - deductions from side impact test scores

Default score awarded

Safety features (Challenger)

These specifications are subject to change. Please check with manufacturer for the latest specifications.



Driver airbag	S	Antilock (ABS) brakes / Electronic brake distribution/Emergency Brake Assist	S/S/X
Passenger front airbag	S	Electronic stability control (ESC, VSC, DSC, ESP, VSA)	S
Side airbags, front seats - chest protection	S	3 point seat belts for all seats	S
Side airbags, front seats - head protection	S	Active head restraints - front seats	X
Side airbags, rear seats - head protection	S	Intelligent seat belt reminder - driver	X
Driver knee airbag	X	Intelligent seat belt reminder - front passenger	X
Seat belt pretensioners - front/rear outboard	S/X	Rear seat belt status indicator	X

Key:

S = standard on all variants

O = optional on base variant. May be standard on higher variants

V= not available on base variant but standard or optional on higher variants

X = not available on any variant

ESC required by ANCAP for 5 star rating from 2008