

Crash Test Results

New Car Safety

MITSUBISHI LANCER

WITHOUT SIDE CURTAIN AIRBAGS

2007 on

Dual Front + Knee airbags



Offset crash test at 64km/h

FRONTAL OFFSET CRASH TEST (v4.1)

Body region scores out of 4 points each: Head/neck 4 pts, chest 3.56 pts, upper legs 4 pts, lower legs 4 pts.

The passenger compartment held its shape well in the offset crash test. The accelerator pedal moved rearwards by 86 mm. The clutch pedal moved upwards 24 mm. The steering wheel hub moved 14mm forward, 22 mm upward and 19 mm sideways. The front ("A") pillar moved 15 mm rearwards. All doors remained closed during the crash. After the crash the driver's door could be opened with normal effort.

The airbag cushioned the head of the driver and contact was stable. The knee airbag protected the driver's knees from the risk of additional injury. The passenger's head was cushioned by the airbag.


SIDE IMPACT CRASH TEST (v4.1)

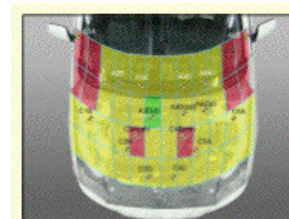
Body region scores out of 4 points each: Head 4 pts, chest 2 pts, abdomen 4 pts, pelvis 4 pts.

The vehicle was not eligible for a Pole Impact Test since it did not have head-protecting side airbags as standard. This test can earn eligible vehicles an extra two points. A separate ANCAP rating is available for the curtain-equipped Lancer.

PEDESTRIAN PROTECTION: 2 Stars

The majority of adult and child head impacts scored partial points. The vehicle received zero points for the upper leg tests, and performed fairly well in the full leg to bumper tests. The tested bumper design applies to Lancers built from July 2008 (earlier builds were also 2 stars).

PEDESTRIAN PROTECTION		
 Rated ★ ★ ★ ★	Child head impacts	6.37
	Adult head impacts	3.81
	Upper leg impacts	Zero
	Lower leg impacts	5.44
	Total (out of 36)	15.62



Child and adult head impact



Adult leg impact (upper and full legforms)

pass marginal fail


ANCAP
Occupant Protection
Rated ★ ★ ★ ★ ★

Occupant Protection Score 31.56 out of 37

Variant: ES Sedan Eng: 2 litre, 5 speed manual

Kerb weight: 1310 kg Category: SMALL CAR

Vehicles built: Dec 07 & Nov 07

Model History and Safety Features

The tested model of Mitsubishi Lancer was introduced in Australia and New Zealand during 2007.

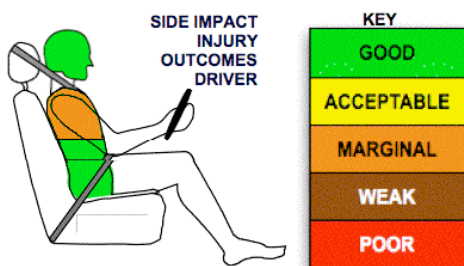
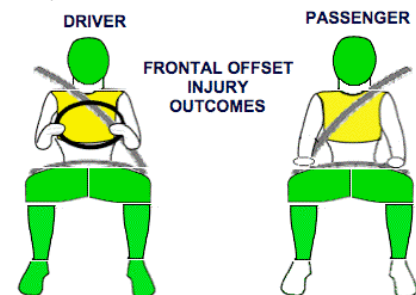
Dual front airbags and a driver knee airbag are standard equipment. Antilock brakes (ABS), electronic brake distribution (EBD) and electronic stability control (ESC) are also standard. Side airbags and head-protecting side curtains are standard on all New Zealand variants and the Australian VR and VRX variants. They are optional on the ES variants in Australia. Intelligent seat belt reminders are fitted to both front seats.

The front seat belt buckles are mounted on the seats and the upper anchorages are adjustable. These features improve the fit of the seat belt. Pretensioners are fitted to the front seat belts to reduce slack in the event of a crash. A three point seat belt is fitted to the centre rear seat. This provides better protection than a two point (lap) seat belt.

OCCUPANT PROTECTION: 4 Stars

The Lancer scored 15.56 out of 16 in the offset crash test. The passenger compartment held its shape well. There was a slight risk of serious chest injury for the driver. All other injury measurements were good.

The vehicle scored 14 out of 16 in the side impact crash test. All injury measurements were good but the chest score was reduced due to unrealistic loading of the dummy's pelvis.



June 2008

PO Box 4041

Manuka ACT 2603

lancer07.doc

Issued 27/5/2008



ANCAP

Crash testing for safety

AUSTRALASIAN
NEW CAR ASSESSMENT
PROGRAM

TECHNICAL DATA - MITSUBISHI LANCER WITHOUT CURTAINS - 2007 on

INJURY MEASUREMENTS

Body region	Offset Crash Test at 64km/h (v4.1)		Side Impact Crash Test at 50km/h (v4.1)
	Driver	Passenger	Driver
Head HIC	233	329	17
Acceleration (g for 3ms)	39.8	42.0	17.6
Neck - Shear (kN)	0.40	0.55	-
Tension (kN)	1.13	1.14	-
Extension (Nm)	19.1	14.6	-
Chest Accln (g for 3ms)	39.700	34.800	-
Compression (mm)	24.30	25.10	19.90
Viscous criterion (m/s)	0.11	0.08	0.14
Abdomen - Force (kN)	-	-	0.350
Pelvis - Force (kN)	-	-	1.810
Upper legs Force (kN)			
Left	1.78	0.26	
Right	0.98	0.85	
Knee displ (mm)			
Left	3.59	0.31	
Right	2.35	1.41	
Lower legs Force (kN)			
Left	1.56	1.27	
Right	1.80	1.40	
Index (Upper/Low)			
Left	0.26 /0.25	0.25 /0.25	
Right	0.28 /0.31	0.24/0.2	

Bonus points (maximum 5)

Pole Test: Not eligible due to a lack of head-protecting side airbags

Seat belt reminders: 2 (see table below for details)

Modifiers - deductions from offset test scores

Head	No deduction
Chest	No deduction
Upper leg Variable & conc. loading	No deduction
Lower leg	No deduction
Foot score	Score 4 points

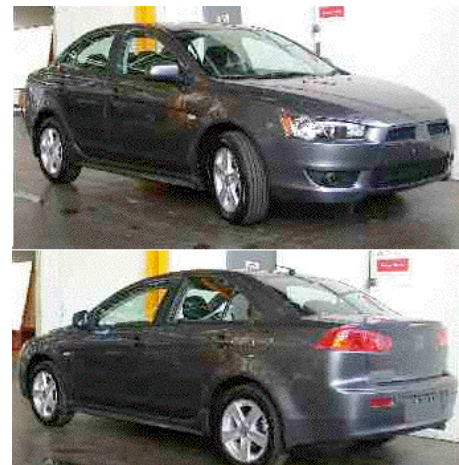
Note: Steering column and pedal movements are measured relative to the driver's seat.

Modifiers - deductions from side impact test scores

Chest T12 loading (moment)	2 pt deduction
----------------------------	----------------

Safety features

These specifications are subject to change. Please check with manufacturer for the latest specifications.



Driver airbag	S	Antilock (ABS) brakes / Electronic brake distribution / Brake Assist	S/S/S
Passenger front airbag	S	Electronic stability control (ESC, VSC, DSC, ESP, VSA)	S#
Side airbags, front seats - chest protection	O (S NZ)	3 point centre rear seat belt	S
Side airbags, front seats - head protection	O (S NZ)	Active head restraints - front seats	S
Side airbags, rear seats - head protection	O (S NZ)	Intelligent seat belt reminder - driver	S
Driver knee airbag	S	Intelligent seat belt reminder - front passenger	S
Seat belt pretensioners (Front/rear outboard)	S/X	Rear seat belt status indicator	X

Key:

S = standard on all variants

O = optional on base variant. May be standard on higher variants

V= not available on base variant but standard or optional on higher variants

X = not available on any variant

ESC required by ANCAP for 5 star rating from 2008