

Crash Test Results

New Car Safety

MINI 3 DOOR HATCH

2007 on

Front+side+head airbags



Offset crash test at 64km/h

FRONTAL OFFSET CRASH TEST (v4.1)

Body region scores out of 4 points each: Head/neck 4 pts, chest 3.6 pts, upper legs 2 pts, lower legs 3.42 pts.

The passenger compartment held its shape well in the offset crash test. The brake pedal moved rearwards by 92 mm. The clutch pedal moved upwards 49 mm. The steering wheel hub moved forwards 11mm, upwards 5 mm and sideways 24 mm. The front ("A") pillar moved 24 mm rearwards. All doors remained closed during the crash. After the crash tools were required to fully open the driver's door.

The airbag cushioned the head of the driver and contact was stable. Steering column and dash components were a potential source of injury for the driver's knees. The passenger's head was cushioned by the airbag.

SIDE IMPACT CRASH TEST (v4.1)

Body region scores out of 4 points each: Head 4 pts, chest 2.49 pts, abdomen 4 pts, pelvis 4 pts.

The vehicle was eligible for an optional pole impact test, since it had head-protecting side airbags and scored four points for the head in the side impact test. The manufacturer decided to go ahead with the pole test and the vehicle earned a further two points.

PEDESTRIAN PROTECTION RATING 2 Stars

The bumper and the front edge of the bonnet scored no points for the protection they offered to pedestrians' legs.



Occupant Protection Score 32.51 out of 37

Variant: 3 door hatch

Eng: 1.6 litre

Kerb weight: 1140 kg

Category: SMALL CAR

Vehicles built: 2007

Important note: The right-hand-drive European Mini Cooper was tested by Euro NCAP. Australasian specifications may vary and therefore models sold in Australasia might provide different levels of protection to those described on this page.

Model History and Safety Features

The tested model of Mini was introduced in Australia during 2007. This updated ANCAP rating applies to all variants of the Mini 3 door hatch, including the diesel version. It does not apply to the Clubman wagon or Convertible.


Dual front airbags, side airbags and head-protecting side curtains are standard equipment. Antilock brakes (ABS), with electronic brake distribution (EBD) are also standard. Electronic stability control (ESC) is optional. Intelligent seat belt reminders are fitted to both front seats.

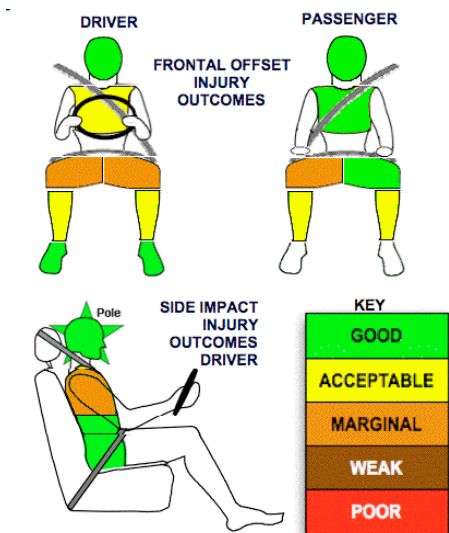
The front seat belt buckles are mounted on the seats and the upper anchorages are adjustable. These features improve the fit of the seat belt. Pre-tensioners are fitted to the front seat belts to reduce slack in the event of a crash.

OCCUPANT PROTECTION: 5 Stars

The Mini Cooper scored 13.02 out of 16 in the offset crash test. The passenger compartment held its shape well. Protection from serious leg injury was marginal for the driver.

The vehicle scored 14.49 out of 16 in the side impact crash test. There was a moderate risk of serious chest injury for the driver. A further 2 points were scored in the optional pole test and 3 points for seat belt reminders.

| PEDESTRIAN PROTECTION | | |
|---|--------------------|-------|
|  ANCAP Rated ★ ★ ★ ★ Tested by Euro NCAP v4.1 | Child head impacts | 6.49 |
| | Adult head impacts | 7.50 |
| | Upper leg impacts | Zero |
| | Lower leg impacts | Zero |
| | Total (out of 36) | 13.99 |



GOOD
ADEQUATE
MARGINAL

June 2007

PO Box 1555
Canberra ACT
Australia 2601
MINI07.DOC

Revised 15/12/2009



TECHNICAL DATA - MINI COOPER - 2007 on

INJURY MEASUREMENTS

| Body region | Offset Crash Test at 64km/h (v4.1) | | Side Impact Crash Test at 50km/h (v4.1) |
|--------------------------------|---------------------------------------|------------|---|
| | Driver | Passenger | Driver |
| Head HIC | 592 | 355 | 101 |
| Acceleration (g for 3ms) | 57.9 | 48.3 | 34.7 |
| Neck - Shear (kN) | 0.42 | 0.41 | - |
| Tension (kN) | 1.47 | 1.03 | - |
| Extension (Nm) | 11.7 | 14.3 | - |
| Chest Accln (g for 3ms) | - | - | - |
| Compression (mm) | 24.83 | 19.74 | 29.55 |
| Viscous criterion (m/s) | 0.11 | 0.07 | 0.29 |
| Abdomen - Force (kN) | - | - | 0.920 |
| Pelvis - Force (kN) | - | - | 1.780 |
| Upper legs Force | | | |
| Left (kN) | 2.35 | 0.44 | |
| Right (kN) | 1.11 | 0.40 | |
| Knee displ (mm) | | | |
| Left | 0.40 | 0.00 | |
| Right | 1.10 | 0.00 | |
| Lower legs Force | | | |
| Left (kN) | 1.99 | 1.91 | |
| Right (kN) | 2.08 | 2.54 | |
| Index (Upper/Low) | | | |
| Left | 0.50 /0.25 | 0.44 /0.22 | |
| Right | 0.53 /0.22 | 0.45/0.21 | |

Bonus points (maximum 5)

Pole Test: 2 pts

Seat belt reminders: 3 (see table below for details)

Modifiers - deductions from offset test scores

| | |
|------------------------------------|-----------------------------|
| Head | No deduction |
| Chest | No deduction |
| Upper leg Variable & conc. loading | 2 pt deduction left & right |
| Passenger | 2 pt deduction right |
| Lower leg | No deduction |
| Foot score | Score 4 points |

Modifiers - deductions from side impact test scores

| | |
|-------|--------------|
| Chest | No deduction |
|-------|--------------|

Safety features (December 2009)

These specifications are subject to change. Please check with manufacturer for the latest specifications.



| | | | |
|---|-----|---|-------|
| Driver airbag | S | Antilock (ABS) brakes / Electronic brake distribution/ Emergency Brake Assist | S/S/X |
| Passenger front airbag | S | Electronic stability control (ESC, VSC, DSC, ESP, VSA) | S# |
| Side airbags, front seats - chest protection | S | 3 point centre rear seat belt | - |
| Side airbags, front seats - head protection | S | Active head restraints - front seats | X |
| Side airbags, rear seats - head protection | S | Intelligent seat belt reminder - driver | S |
| Driver knee airbag | X | Intelligent seat belt reminder - front passenger | S |
| Seat belt pretensioners - front/rear outboard | S/X | Rear seat belt status indicator | S |

Key:

S = standard on all variants

O = optional on base variant. May be standard on higher variants

V= not available on base variant but standard or optional on higher variants

X = not available on any variant

ESC required by ANCAP for 5 star rating from 2008