

Crash Test Results

New Car Safety

MERCEDES C-CLASS (LHD)

2007 on Front+side+head+knee airbags



ANCAP Occupant Protection
Rated ★★★★★

Occupant Protection Score 36.16 out of 37

Variant: 200CDI

Eng: 2.1 Diesel

Kerb weight: 1490 kg

Category: LUXURY

Vehicles built: 2007

Tested by Euro NCAP

Important note: The *diesel left-hand-drive* European model was tested by Euro NCAP. Australasian specifications may vary and therefore models sold in Australasia might provide different levels of protection to those described on this page.

Model History and Safety Features

The tested model of Mercedes C-Class was introduced in Australia during 2007.

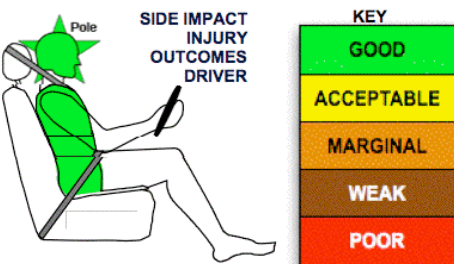
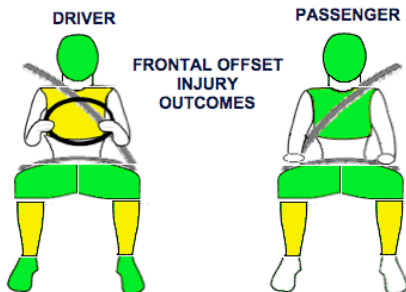
Dual front airbags, driver knee airbag, side airbags and head-protecting side curtains are standard equipment. Antilock brakes (ABS), electronic brake distribution (EBD) and electronic stability control (ESC) are also standard along with several other advanced safety features. Intelligent seat belt reminders are fitted to all seats.

The front seat belt buckles are mounted on the seats and the upper anchorages are adjustable. These features improve the fit of the seat belt. Pretensioners are fitted to the front seat belts to reduce slack in the event of a crash. A three point seat belt is fitted to the centre rear seat. This provides better protection than a two point (lap) seat belt.

OCCUPANT PROTECTION: 5 Stars

The C-Class scored 15.16 out of 16 in the offset crash test. The passenger compartment held its shape well. There was a slight risk of serious chest and leg injury for the driver.

The vehicle scored 16 out of 16 in the side impact crash test and a further two points in the optional pole test.



Offset crash test at 64km/h

FRONTAL OFFSET CRASH TEST (v4.1)

Body region scores out of 4 points each: Head/neck 4 pts, chest 3.93 pts, upper legs 4 pts, lower legs 3.23 pts.

The passenger compartment held its shape well in the offset crash test. The brake pedal moved rearwards by 8 mm and downwards 1mm. The steering wheel hub moved 70mm forward, 34mm downward and 7 mm sideways. The front ("A") pillar moved 2 mm rearwards. All doors remained closed during the crash. After the crash all door could be opened with normal effort.

The airbag cushioned the head of the driver and contact was stable. The knee airbag protected the driver's knees. The passenger's head was cushioned by the airbag.

SIDE IMPACT CRASH TEST (v4.1)

Body region scores out of 4 points each: Head 4 pts, chest 4 pts, abdomen 4 pts, pelvis 4 pts.

The vehicle was eligible for an optional pole impact test, since it had head-protecting side airbags and scored four points for the head in the side impact test. The manufacturer decided to go ahead with the pole test and the vehicle earned a further two points.

PEDESTRIAN PROTECTION RATING (v4.1)

PEDESTRIAN PROTECTION			
 Rated ★★★★★ Tested by Euro NCAP	Child head impacts	3.26	
	Adult head impacts	0.50	
	Upper leg impacts	1.50	
	Lower leg impacts	5.57	
	Total (out of 36)	10.83	



■ PASS
■ MARGINAL
■ FAIL

January 2008

PO Box 1555
 Canberra ACT
 Australia 2601
 mb_c07.doc

Revised 26/4/2012



ANCAP

Crash testing for safety

AUSTRALASIAN
 NEW CAR ASSESSMENT
 PROGRAM

TECHNICAL DATA - MERCEDES C-CLASS - 2007 on

INJURY MEASUREMENTS

Body region	Offset Crash Test at 64km/h (v4.1)		Side Impact Crash Test at 50km/h (v4.1)
	Driver	Passenger	Driver
Head HIC	341	332	22
Acceleration (g for 3ms)	40.4	49.0	19.8
Neck - Shear (kN)	0.83	0.46	-
Tension (kN)	0.97	0.79	-
Extension (Nm)	6.7	22.8	-
Chest Accln (g for 3ms)	-	-	-
Compression (mm)	22.46	21.10	12.34
Viscous criterion (m/s)	0.05	0.05	0.04
Abdomen - Force (kN)	-	-	0.930
Pelvis - Force (kN)	-	-	1.040
Upper legs Force (kN)			
Left	1.29	1.53	
Right	1.56	0.18	
Knee displ (mm)			
Left	0.00	0.00	
Right	2.00	0.00	
Lower legs Force (kN)			
Left	3.16	2.79	
Right	2.46	2.14	
Index (Upper/Low)			
Left	0.53 /0.35	0.36 /0.23	
Right	0.35 /0.39	0.48/0.37	

Bonus points (maximum 5)

Pole Test: 2 pts

Seat belt reminders: 3 (see table below for details)

Modifiers - deductions from offset test scores

Head	No deduction
Chest	No deduction
Upper leg Variable & conc. loading	No deduction
Lower leg	No deduction
Foot score	Score 4 points

Modifiers - deductions from side impact test scores

Chest	No deduction
-------	--------------

Safety features

These specifications are subject to change. Please check with manufacturer for the latest specifications.



Driver airbag	S	Antilock (ABS) brakes / Electronic brake distribution	S/S
Passenger front airbag	S	Electronic stability control (ESC, VSC, DSC, ESP, VSA)	S #
Side airbags, front seats - chest protection	S	3 point centre rear seat belt	S
Side airbags, front seats - head protection	S	Active head restraints - front seats	S
Side airbags, rear seats - head protection		Intelligent seat belt reminder - driver	S
Driver knee airbag	S	Intelligent seat belt reminder - front passenger	S
Front seat belt pretensioners	S	Rear seat belt status indicator	S

ESC required by ANCAP for 5 star rating from 2008

Key:

S = standard on all variants

O = optional on base variant. May be standard on higher variants

V= not available on base variant but standard or optional on higher variants

X = not available on any variant