

Crash Test Results

New Car Safety

MERCEDES-BENZ E-CLASS

Jul 09 on Front+side+head+knee airbags



Offset crash test at 64km/h



ANCAP Occupant Protection
Rated ★★★★★

Occupant Protection Score 34.88 out of 37

Variant: 220 CDI Avantgarde Eng: 2.2 diesel
Kerb weight: 1740 kg Category: CAR - LUXURY
Vehicles built: 2009 Tested by Euro NCAP

Important note: The *diesel left-hand-drive* European model was tested by Euro NCAP. Australasian specifications may vary and therefore models sold in Australasia might provide different levels of protection to those described on this page.

Model History and Safety Features

The tested model of Mercedes-Benz E-Class was introduced in Australia during 2009.

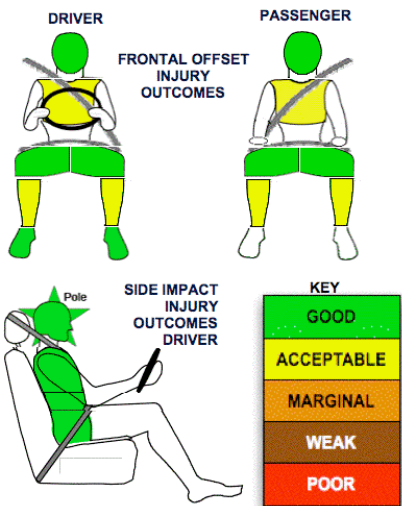
Dual front airbags, side airbags, pelvis airbags, head-protecting side curtains and a driver knee airbag are standard equipment. Antilock brakes (ABS), electronic brakeforce distribution (EBD), emergency brake assist and electronic stability control (ESC) are also standard. Intelligent seat belt reminders are fitted to all seats. In accordance with the test protocol, the PRE-SAFE system was not activated for the crash tests conducted by Euro NCAP. PRE-SAFE can be expected improve the occupant protection beyond that evaluated by Euro NCAP. Several other advanced safety features are available, including a reversing camera.

Pretensioners are fitted to all outboard belts to reduce slack in the event of a crash. A three point seat belt is fitted to the centre rear seat. This provides better protection than a two point (lap) seat belt.

OCCUPANT PROTECTION: 5 Stars

The E-Class scored 13.88 out of 16 in the offset crash test. The passenger compartment held its shape well. There was a slight risk of serious chest and leg injury for the driver and front passenger.

The vehicle scored 16 out of 16 in the side impact crash test and a further two points in the pole test.



FRONTAL OFFSET CRASH TEST (v4.2)

Body region scores out of 4 points each: Head/neck 4 pts, chest 2.78 pts, upper legs 4 pts, lower legs 3.11 pts.

The passenger compartment held its shape well in the offset crash test. The brake pedal moved rearwards by 8 mm and upwards 2 mm. The steering wheel hub moved 75mm forward, 35mm downward and 5 mm sideways. The front ("A") pillar moved 3 mm rearwards. All doors remained closed during the crash. After the crash all doors could be opened with normal effort.

The airbag cushioned the head of the driver and contact was stable. Knee airbags protected the driver's knees.


SIDE IMPACT CRASH TEST (v4.2)

Body region scores out of 4 points each: Head 4 pts, chest 4 pts, abdomen 4 pts, pelvis 4 pts.

The vehicle was eligible for a pole impact test, since it had head-protecting side airbags. The vehicle earned a further two points in this test.

PEDESTRIAN PROTECTION: 3 Stars

The tested E-Class was equipped with a pop-up bonnet that provided mostly good head protection. This 3-star pedestrian protection rating only applies to E-Class with this feature, which will be standard on Australian models (except the E63 AMG) from early in 2010.

PEDESTRIAN PROTECTION		
 ANCAP Rated ★★☆☆☆ Tested by Euro NCAP v4.2 with pop-up bonnet	Child head impacts	9.02
	Adult head impacts	6
	Upper leg impacts	Zero
	Lower leg impacts	6
	Total (out of 36)	21.02



GOOD
ADEQUATE
MARGINAL

December 2009

PO Box 4041
Manuka ACT 2603
e-class09.doc
Issued 10/122009



ANCAP

Crash testing for safety
AUSTRALASIAN
NEW CAR ASSESSMENT
PROGRAM

TECHNICAL DATA - MERCEDES E-CLASS - Jul 2009 on

INJURY MEASUREMENTS

Body region	Offset Crash Test at 64km/h (v4.2)		Side Impact Crash Test at 50km/h (v4.2)
	Driver	Passenger	Driver
Head HIC	330	422	56
Acceleration (g for 3ms)	42.9	56.5	26.6
Neck - Shear (kN)	0.75	0.32	-
Tension (kN)	0.84	0.56	-
Extension (Nm)	5.6	11.2	-
Chest Accln (g for 3ms)	-	-	-
Compression (mm)	30.56	23.40	4.94
Viscous criterion (m/s)	0.11	0.09	0.01
Abdomen - Force (kN)	-	-	0.330
Pelvis - Force (kN)	-	-	1.370
Upper legs Force (kN)			
Left	1.53	0.30	
Right	1.69	0.30	
Knee displ (mm)			
Left	0.40	0.00	
Right	0.40	0.20	
Lower legs Force (kN)			
Left	2.70	3.34	
Right	3.33	2.04	
Index (Upper/Low)			
Left	0.45 /0.19	0.55 /0.18	
Right	0.45 /0.36	0.5/0.39	

Bonus points (maximum 5)

Pole Test: 2 pts

Seat belt reminders: 3 (see table below for details)

Modifiers - deductions from offset test scores

Head	No deduction
Chest	No deduction
Upper leg Variable & conc. loading	No deduction
Lower leg	No deduction
Foot score	Score 4 points

Modifiers - deductions from side impact test scores

Chest	No deduction
-------	--------------

Safety features

These specifications are subject to change. Please check with manufacturer for the latest specifications.



Driver airbag	S	Antilock (ABS) brakes / Electronic brake distribution / Brake Assist	S/S/S
Passenger front airbag	S	Electronic stability control (ESC, VSC, DSC, ESP, VSA)	S#
Side airbags, front seats - chest protection*	S	3 point centre rear seat belt	S
Side airbags, front seats - head protection	S	Active head restraints - front seats	S
Side airbags, rear seats - head protection		Intelligent seat belt reminder - driver	S
Driver knee airbag	S	Intelligent seat belt reminder - front passenger	S
Seat belt pretensioners (Front/Rear outboard)	S/S	Intelligent seat belt reminder - rear seats	S

Key: Pelvis airbags are also standard for the driver and front passenger.

S = standard on all variants

O = optional on base variant. May be standard on higher variants

V= not available on base variant but standard or optional on higher variants

X = not available on any variant

ESC required by ANCAP for 5 star rating from 2008