

# Crash Test Results

## New Car Safety

### MAZDA 6

2008 on

Front+side+head airbags



**ANCAP** Occupant Protection  
Rated ★★★★★

**Occupant Protection Score 32.74 out of 37**

Variant: Limited

Eng: 2.5 litre

Kerb weight: 1370 kg

Category: MEDIUM CAR

Vehicles built: 2008

Tested by Euro NCAP

**Important note:** The right-hand-drive European model was tested by Euro NCAP. Australasian specifications may vary and therefore models sold in Australasia might provide different levels of protection to those described on this page.

#### Model History and Safety Features

The tested model of Mazda6 was introduced in Australia during 2008.

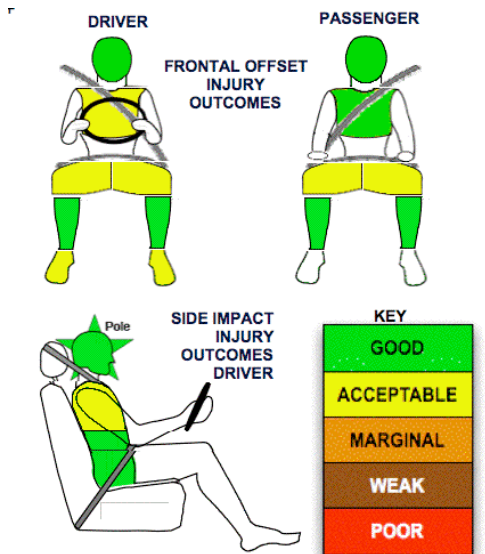
Dual front airbags, side airbags and head-protecting side curtains are standard equipment. Antilock brakes (ABS), electronic brake distribution (EBD), emergency brake assist and electronic stability control (ESC) are also standard. Intelligent seat belt reminders are fitted to both front seats.

The front seat belt buckles are mounted on the seats and the upper anchorages are adjustable. These features improve the fit of the seat belt. Pretensioners are fitted to the front seat belts to reduce slack in the event of a crash. A three point seat belt is fitted to the centre rear seat. This provides better protection than a two point (lap) seat belt.

#### OCCUPANT PROTECTION: 5 Stars

The Mazda6 scored 13.25 out of 16 in the offset crash test. The passenger compartment held its shape well. There was a slight risk of serious chest injury for the driver and slight risk of serious leg injury for the driver and passenger.

The vehicle scored 15.48 out of 16 in the side impact crash test. There was a slight risk of serious chest injury for the driver. A further two points were scored in the optional pole test.



Offset crash test at 64km/h

#### FRONTAL OFFSET CRASH TEST (v4.2)

Body region scores out of 4 points each: Head/neck 4.000 pts, chest 3.09 pts, upper legs 3 pts, lower legs 3.16 pts.

The passenger compartment held its shape well in the offset crash test. The clutch pedal moved rearwards by 121 mm. The brake pedal moved downwards 78 mm. The steering wheel hub moved 12 mm rearward, 52 mm upward and 13 mm sideways. The front ("A") pillar moved 8 mm rearwards. All doors remained closed during the crash. After the crash all doors could be opened with normal effort.

The airbag cushioned the head of the driver and contact was stable. Steering column and dash components were a potential source of injury for the driver's knees. The passenger's head was cushioned by the airbag.

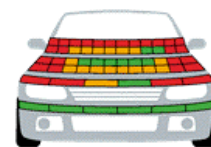
#### SIDE IMPACT CRASH TEST (v4.2)

Body region scores out of 4 points each: Head 4 pts, chest 3.48 pts, abdomen 4 pts, pelvis 4 pts.

The vehicle was eligible for an optional pole impact test since it had head-protecting side airbags. The manufacturer decided to go ahead with the pole test and the vehicle earned a further two points.

#### PEDESTRIAN PROTECTION: 2 Stars

PEDESTRIAN PROTECTION		
<p>Rated ★★☆☆☆ Tested by Euro NCAP v4.2</p>	Child head impacts	7.28
	Adult head impacts	2.81
	Upper leg impacts	1.48
	Lower leg impacts	6
	Total (out of 36)	17.57



FAIR  
MARGINAL  
POOR

March 2009

PO Box 4041

Manuka ACT 2603

mazda6\_08.doc

Issued 25/2/2009



**ANCAP**

Crash testing for safety

AUSTRALASIAN  
NEW CAR ASSESSMENT  
PROGRAM

www.ancap.com.au

# TECHNICAL DATA - MAZDA 6 - 2008 on

## INJURY MEASUREMENTS

Body region	Offset Crash Test at 64km/h (v4.2)		Side Impact Crash Test at 50km/h (v4.2)
	Driver	Passenger	Driver
<b>Head HIC</b>	367	211	48
Acceleration (g for 3ms)	-	38.1	23.5
<b>Neck - Shear (kN)</b>	0.33	0.63	-
Tension (kN)	1.41	0.68	-
Extension (Nm)	22.7	17.1	-
<b>Chest Accln (g for 3ms)</b>	-	-	-
Compression (mm)	28.35	20.63	24.58
Viscous criterion (m/s)	0.10	0.12	0.21
<b>Abdomen - Force (kN)</b>	-	-	1.000
<b>Pelvis - Force (kN)</b>	-	-	2.760
<b>Upper legs Force (kN)</b>			
Left	0.94	1.10	
Right	1.44	2.10	
<b>Knee displ (mm)</b>			
Left	0.40	0.50	
Right	0.94	1.70	
<b>Lower legs Force (kN)</b>			
Left	1.33	1.38	
Right	1.80	1.44	
<b>Index (Upper/Low)</b>			
Left	0.33 /0.22	0.29 /0.14	
Right	0.23 /0.38	0.24/0.18	

### Bonus points (maximum 5)

Pole Test: 2 pts

Seat belt reminders: 2 (see table below for details)

### Modifiers - deductions from offset test scores

Head	No deduction
Chest	No deduction
Upper leg Variable loading	1 pt deduction Left & Right for driver & passenger
Lower leg	No deduction
Foot score Pedal rearward move	Score 3.16 points

### Modifiers - deductions from side impact test scores

Chest	No deduction
-------	--------------

### Safety features

These specifications are subject to change. Please check with manufacturer for the latest specifications.

Driver airbag	S	Antilock (ABS) brakes / Electronic brake distribution / Brake Assist	S/S/S
Passenger front airbag	S	Electronic stability control (ESC, VSC, DSC, ESP, VSA)	S#
Side airbags, front seats - chest protection	S	3 point centre rear seat belt	S
Side airbags, front seats - head protection	S	Active head restraints - front seats	S
Side airbags, rear seats - head protection	S	Intelligent seat belt reminder - driver	S
Driver knee airbag	X	Intelligent seat belt reminder - front passenger	S
Seat belt pretensioners (Front/Rear outboard)	S/X	Rear seat belt status indicator	S*

\* The rear seats have a seat belt reminder system with audible alarm but it did not meet Euro NCAP's requirements for a bonus point.

Key:

S = standard on all variants

O = optional on base variant. May be standard on higher variants

V= not available on base variant but standard or optional on higher variants

X = not available on any variant

# ESC required by ANCAP for 5 star rating from 2008

