

Crash Test Results

New Car Safety

MAZDA3

Mid 2009 on Front+side+head airbags*



ANCAP Occupant Protection
Rated ★★★★★

Occupant Protection Score 33.33 out of 37

* Safety equipment, as tested, not standard on all variants

Variant: Maxx 5 door hatch Eng: 1.6 litre
Kerb weight: 1280 kg Category: CAR - SMALL
Vehicles built: 2009 Tested by Euro NCAP

Important note: The 1.6 litre left-hand-drive European model was tested by Euro NCAP. Australasian specifications may vary and therefore models sold in Australasia might provide different levels of protection to those described on this page.

Model History and Safety Features

The Mazda3 was introduced in Australia during 2009. The Australian Mazda3 has a 2 litre engine.

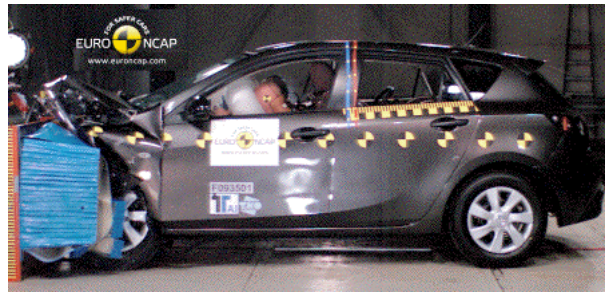
Dual front airbags are standard equipment. Side airbags and head-protecting side curtains are needed for this 5-star ANCAP rating. They are optional on the Neo and standard on other variants. Antilock brakes (ABS), electronic brakeforce distribution (EBD), emergency brake assist and electronic stability control (ESC) are standard on all variants. Intelligent seat belt reminders are fitted to both front seats.

Pretensioners are fitted to the front seat belts to reduce slack in the event of a crash. A three point seat belt is fitted to the centre rear seat. This provides better protection than a two point (lap) seat belt.

OCCUPANT PROTECTION: 5 Stars

The Mazda3 scored 15.33 out of 16 in the offset crash test. The passenger compartment held its shape very well. Protection from serious injury was good for the driver. There was a slight risk of serious chest injury for the passenger.

The vehicle scored 15 out of 16 in the side impact crash test. Injury measurements were all good but the side curtain did not deploy correctly for the rear seat. This also occurred in pole test, which scored one point out of two.



Offset crash test at 64km/h

FRONTAL OFFSET CRASH TEST (v4.2)

Body region scores out of 4 points each: Head/neck 4 pts, chest 3.33 pts, upper legs 4 pts, lower legs 4 pts.

The passenger compartment held its shape well in the offset crash test. The clutch pedal moved rearwards by 52 mm and upwards 16 mm. The steering wheel hub moved 15mm forward, 4mm downward and 11 mm sideways. The front ("A") pillar moved 2 mm rearwards. All doors remained closed during the crash. After the crash all doors could be opened with normal effort.

The airbag cushioned the head of the driver and contact was stable. There were no knee hazards. The passenger's head was cushioned by the airbag.

SIDE IMPACT CRASH TEST (v4.2)

Body region scores out of 4 points each: Head 3 pts, chest 4 pts, abdomen 4 pts, pelvis 4 pts.

The vehicle was eligible for a pole impact test, since it had head-protecting side airbags. One point was deducted for incorrect curtain airbag deployment for the rear seat in both the side impact and pole crash tests.

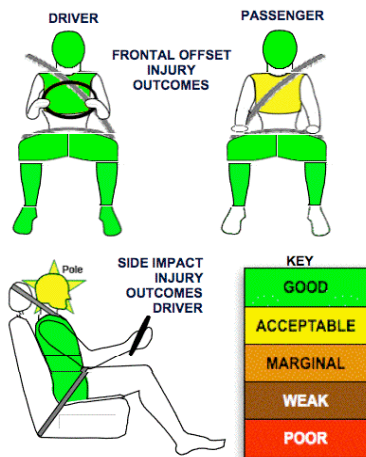
PEDESTRIAN PROTECTION: 2 Stars

The bumper scored maximum points for its protection of pedestrians' legs. However, in those areas most likely to be struck by an adult's head, the bonnet provided poor protection and scored no points.

PEDESTRIAN PROTECTION		
<p>Rated ★★☆☆☆ Tested by Euro NCAP v4.2</p>	Child head impacts	8.62
	Adult head impacts	1.61
	Upper leg impacts	2
	Lower leg impacts	6
	Total (out of 36)	18.23



GOOD
ADEQUATE
MARGINAL



December 2009

PO Box 4041
Manuka ACT 2603
mazda3_09.doc
Issued 10/12/2009



ANCAP
Crash testing for safety
AUSTRALASIAN
NEW CAR ASSESSMENT
PROGRAM

TECHNICAL DATA - MAZDA 3 WITH SIDE CURTAINS - Mid 2009 on

INJURY MEASUREMENTS

Body region	Offset Crash Test at 64km/h (v4.2)		Side Impact Crash Test at 50km/h (v4.2)
	Driver	Passenger	Driver
Head HIC	253	163	46
Acceleration (g for 3ms)	36.4	32.0	22.8
Neck - Shear (kN)	0.33	0.55	-
Tension (kN)	0.98	0.92	-
Extension (Nm)	19.7	9.3	-
Chest Accln (g for 3ms)	-	-	-
Compression (mm)	20.92	26.68	19.73
Viscous criterion (m/s)	0.09	0.10	0.10
Abdomen - Force (kN)	-	-	0.760
Pelvis - Force (kN)	-	-	1.960
Upper legs Force (kN)			
Left	0.36	1.60	
Right	0.04	0.10	
Knee displ (mm)			
Left	0.20	1.80	
Right	0.00	0.10	
Lower legs Force (kN)			
Left	1.44	1.65	
Right	1.51	1.28	
Index (Upper/Low)			
Left	0.37 /0.19	0.16 /0.16	
Right	0.38 /0.16	0.22/0.1	

Bonus points (maximum 5)

Pole Test: 1 pt

Seat belt reminders: 2 (see table below for details)

Modifiers - deductions from offset test scores

Head	No deduction
Chest	No deduction
Upper leg	No deduction
Lower leg	No deduction
Foot score	Score 4 points

Modifiers - deductions from side impact test scores

Head Incorrect curtain deployment 1 pt deduction, side and pole tests

Safety features

These specifications are subject to change. Please check with manufacturer for the latest specifications.



Driver airbag	S	Antilock (ABS) brakes / Electronic brake distribution / Brake Assist	S/S/S
Passenger front airbag	S	Electronic stability control (ESC, VSC, DSC, ESP, VSA)	S#
Side airbags, front seats - chest protection	O ✓	3 point centre rear seat belt	S
Side airbags, front seats - head protection	O ✓	Active head restraints - front seats	S
Side airbags, rear seats - head protection	O ✓	Intelligent seat belt reminder - driver	S
Driver knee airbag	X	Intelligent seat belt reminder - front passenger	S
Seat belt pretensioners (Front/Rear outboard)	S/X	Intelligent seat belt reminder - rear seats	X

Key: ✓ = Fitted to vehicle that was crash tested (where not standard)

S = standard on all variants

O = optional on base variant. May be standard on higher variants

V = not available on base variant but standard or optional on higher variants

X = not available on any variant

ESC required by ANCAP for 5 star rating from 2008