

Crash Test Results

New Car Safety

MAZDA 2

From Oct 2011 Front+side+head airbags



ANCAP Safety Rating
Safety ★★★★★

Occupant Protection Score 34.33 out of 37

Tested variant: GE 5 door hatch Eng: 1.3

Kerb weight: 995 kg

Category: LIGHT CAR

Vehicles built: 2007

Tested by Euro NCAP

Important note: The *left-hand-drive* European model with 1.3 litre engine was tested by Euro NCAP. Australasian specifications may vary and therefore models sold in Australasia might provide different levels of protection to those described on this page.

Model History and Safety Features

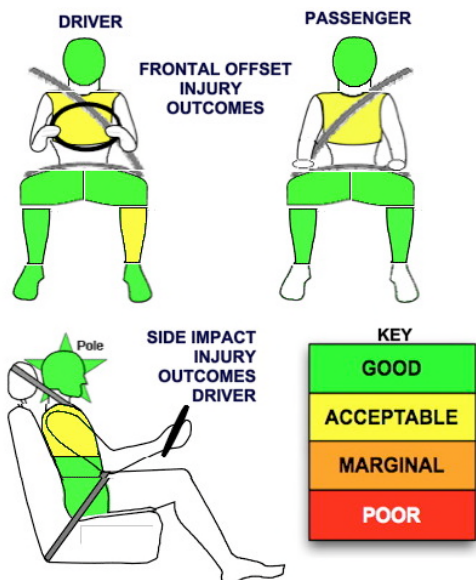
The tested model of Mazda2 was introduced in Australia at the end of 2007. This 5-star rating applies to all hatch and sedan variants with 6 airbags and electronic stability control. These became standard in Australia from October 2011. Separate ANCAP ratings are available for earlier variants.

Dual front airbags, side airbags and head-protecting side curtains are standard. Electronic stability control (ESC) is also standard. Intelligent seat belt reminders are fitted to both front seats.

Pretensioners are fitted to the front seat belts to reduce slack in the event of a crash.

OCCUPANT PROTECTION: 5 Stars

The Mazda2 scored 15.55 out of 16 in the offset crash test. The passenger compartment held its shape well. There was a slight risk of serious chest and leg injury for the driver. The vehicle scored 14.78 out of 16 in the side impact crash test. There was a slight risk of serious chest injury for the driver. A further two points were earned in the optional pole test.



Offset crash test at 64km/h

FRONTAL OFFSET CRASH TEST

Body region scores out of 4 points each: Head/neck 4 pts, chest 3.59 pts, upper legs 4 pts, lower legs 3.96 pts.

The passenger compartment held its shape well in the offset crash test. The brake pedal moved rearwards by 45 mm and upwards 17 mm. The steering wheel hub moved 4mm forward, 26 mm upward and 10 mm sideways. The front ("A") pillar moved 4 mm rearwards. All doors remained closed during the crash.

The airbag cushioned the head of the driver and contact was stable. There were no knee hazards. The passenger's head was cushioned by the airbag.

SIDE IMPACT CRASH TEST

Body region scores out of 4 points each: Head 4 pts, chest 3.78 pts, abdomen 4 pts, pelvis 4 pts.

A rear door opened during the crash and this resulted in a one point deduction from the score.

The vehicle was eligible for a pole impact test and earned the maximum two points.

PEDESTRIAN PROTECTION: Marginal

The bumper was rated as predominantly fair for its protection of pedestrians' legs. The part of the bonnet surface likely to be struck by adults' heads was rated as predominantly poor.

PEDESTRIAN PROTECTION	Child head impacts	7.66
MARGINAL	Adult head impacts	4
	Upper leg impacts	2.38
	Lower leg impacts	4.45
	Total (out of 36)	18.49

Tested by Euro NCAP v4.1*

* Based on tests to a previous protocol. Scores might vary under the latest test protocol.



NOVEMBER 2012

PO Box 4041

Manuka ACT 2603

mazda2_11.doc Rated: 2011

Issued 19/11/2012



ANCAP

Crash testing for safety

AUSTRALASIAN
NEW CAR ASSESSMENT
PROGRAM

www.ancap.com.au

TECHNICAL DATA - MAZDA 2 - From October 2011

INJURY MEASUREMENTS

Body region	Offset Crash Test at 64km/h (v4.1)		Side Impact Crash Test at 50km/h (v4.1)
	Driver	Passenger	Driver
Head HIC	231	225	78
Acceleration (g for 3ms)	40.5	37.0	27.7
Neck - Shear (kN)	0.37	0.41	-
Tension (kN)	1.23	0.70	-
Extension (Nm)	11.0	9.8	-
Chest Accln (g for 3ms)	-	-	-
Compression (mm)	24.85	23.03	14.34
Viscous criterion (m/s)	0.09	0.06	0.09
Abdomen - Force (kN)	-	-	0.77
Pelvis - Force (kN)	-	-	2.40
Upper legs Force (kN)			
Left	0.24	1.63	
Right	0.00	0.40	
Knee displ (mm)			
Left	0.00	2.10	
Right	0.00	0.00	
Lower legs Force (kN)			
Left	1.80	1.09	
Right	1.75	1.30	
Index (Upper/Low)			
Left	0.41 /0.18	0.14 /0.16	
Right	0.33 /0.18	0.27/0.16	

Bonus points (maximum 5)

Pole Test: 2 pts

Seat belt reminders: 2 (see table below for details)

Modifiers - deductions from offset test scores

Head	No deduction
Chest	No deduction
Upper leg Variable & conc. loading	No deduction
Lower leg	No deduction
Foot score	Score 4 points

Modifiers - deductions from side impact test scores

Chest Backplate load	0.22 pt deduction
Door opened	1 pt deduction

Safety features (October 2011)

These specifications are subject to change. Please check with manufacturer for the latest specifications.

Driver airbag	S	Antilock (ABS) brakes / Electronic brake distribution / Brake Assist	S/S/S
Passenger front airbag	S	Electronic stability control (ESC, VSC, DSC, ESP, VSA)	S#
Side airbags, front seats - chest protection	S	3 point centre rear seat belt	S
Side airbags, front seats - head protection	S	Active head restraints - front seats	S
Side airbags, rear seats - head protection	S	Intelligent seat belt reminder - driver	S
Driver knee airbag	X	Intelligent seat belt reminder - front passenger	S
Seat belt pretensioners (Front/Rear outboard)	S/X	Intelligent seat belt reminder - rear seats	X

Key:

S = standard on all variants

O = optional on base variant. May be standard on higher variants

V= not available on base variant but standard or optional on higher variants

X = not available on any variant



ANCAP

Crash testing for safety

AUSTRALASIAN
NEW CAR ASSESSMENT
PROGRAM

www.ancap.com.au