

Crash Test Results

New Car Safety

MAZDA2 (LHD) without ESC 2008 on Front+side+head airbags*



Offset crash test at 64km/h

FRONTAL OFFSET CRASH TEST (v4.1)

Body region scores out of 4 points each: Head/neck 4 pts, chest 3.59 pts, upper legs 4 pts, lower legs 3.96 pts.

The passenger compartment held its shape well in the offset crash test. The brake pedal moved rearwards by 45 mm and upwards 17 mm. The steering wheel hub moved 4mm forward, 26 mm upward and 10 mm sideways. The front ("A") pillar moved 4 mm rearwards. All doors remained closed during the crash.

The airbag cushioned the head of the driver and contact was stable. There were no knee hazards. The passenger's head was cushioned by the airbag.


SIDE IMPACT CRASH TEST (v4.1)

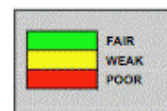
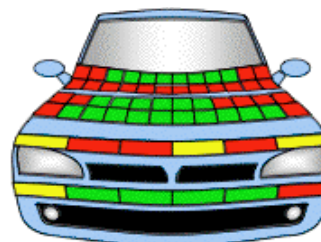
Body region scores out of 4 points each: Head 4 pts, chest 3.78 pts, abdomen 4 pts, pelvis 4 pts.

A rear door opened during the crash.

The vehicle was eligible for an optional pole impact test, since it had head-protecting side airbags and scored four points for the head in the side impact test. The manufacturer decided to go ahead with the pole test and the vehicle earned a further two points.

PEDESTRIAN PROTECTION RATING (v4.1)

PEDESTRIAN PROTECTION		
 Rated ★ ★ ★ ★	Child head impacts	7.66
	Adult head impacts	4
	Upper leg impacts	2.38
	Lower leg impacts	4.45
	Total (out of 36)	18.49



Occupant Protection Score 32.49 out of 37

* Safety equipment, as tested, not standard on all variants

Variant: GE 5 door

Eng: 1.3

Kerb weight: 995 kg

Category: LIGHT CAR

Vehicles built: 2007

Tested by Euro NCAP

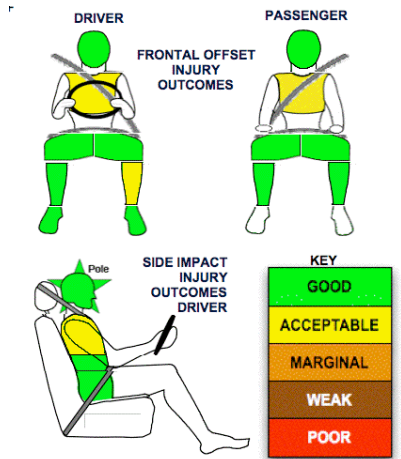
Important note: The *left-hand-drive* European model with 1.3 litre engine was tested by Euro NCAP. Australasian specifications may vary and therefore models sold in Australasia might provide different levels of protection to those described on this page.

Model History and Safety Features

The tested model of Mazda2 was introduced in Australia at the end of 2007. Dual front airbags and antilock brakes (ABS) with electronic brake distribution (EBD) are standard. Side airbags and head-protecting side curtains are standard on the Genki variant and optional on others in Australia. Electronic stability control (ESC) is optional in Australia. Side airbags and curtains are standard in New Zealand. ESC is standard on the Sport variant in New Zealand but is not available on the Classic variant. Intelligent seat belt reminders are fitted to both front seats. The front seat belt buckles are mounted on the seats and the upper anchorages are adjustable. These features improve the fit of the seat belt. Pretensioners are fitted to the front seat belts to reduce slack in the event of a crash. A three point seat belt is fitted to the centre rear seat. This provides better protection than a two point (lap) seat belt.

OCCUPANT PROTECTION: 4 Stars

The Mazda2 scored 15.55 out of 16 in the offset crash test. The passenger compartment held its shape well. There was a slight risk of serious chest and leg injury for the driver. The vehicle scored 14.78 out of 16 in the side impact crash test. There was a slight risk of serious chest and abdomen injury for the driver. A further two points were earned in the optional pole test. An ANCAP 5 star rating applies to Mazda2s fitted with curtains and ESC. Without ESC, the vehicle is limited to an overall score of 32.49 and 4 stars.



January 2008

PO Box 1555

Canberra ACT

Australia 2601

MAZDA2_08.DOC

Issued 19/8/08



ANCAP

Crash testing for safety

AUSTRALASIAN
NEW CAR ASSESSMENT
PROGRAM

TECHNICAL DATA - MAZDA 2 without ESC - 2008 on

INJURY MEASUREMENTS

Body region	Offset Crash Test at 64km/h (v4.1)		Side Impact Crash Test at 50km/h (v4.1)
	Driver	Passenger	Driver
Head HIC	231	225	78
Acceleration (g for 3ms)	40.5	37.0	27.7
Neck - Shear (kN)	0.37	0.41	-
Tension (kN)	1.23	0.70	-
Extension (Nm)	11.0	9.8	-
Chest Accln (g for 3ms)	-	-	-
Compression (mm)	24.85	23.03	14.34
Viscous criterion (m/s)	0.09	0.06	0.09
Abdomen - Force (kN)	-	-	0.77
Pelvis - Force (kN)	-	-	2.40
Upper legs Force (kN)			
Left	0.24	1.63	
Right	0.00	0.40	
Knee displ (mm)			
Left	0.00	2.10	
Right	0.00	0.00	
Lower legs Force (kN)			
Left	1.80	1.09	
Right	1.75	1.30	
Index (Upper/Low)			
Left	0.41 /0.18	0.14 /0.16	
Right	0.33 /0.18	0.27/0.16	

Bonus points (maximum 5)

Pole Test: 2 pts

Seat belt reminders: 2 (see table below for details)

Modifiers - deductions from offset test scores

Head	No deduction
Chest	No deduction
Upper leg Variable & conc. loading	No deduction
Lower leg	No deduction
Foot score	Score 4 points

Modifiers - deductions from side impact test scores

Chest Backplate load	0.22 pt deduction
Door opened	1 pt deduction

Safety features

These specifications are subject to change. Please check with manufacturer for the latest specifications.



Driver airbag	S	Antilock (ABS) brakes / Electronic brake distribution	S/S
Passenger front airbag	S	Electronic stability control (ESC, VSC, DSC, ESP, VSA)	O # (V NZ)
Side airbags, front seats - chest protection	O √ (S NZ)	3 point centre rear seat belt	S
Side airbags, front seats - head protection	O √ (S NZ)	Active head restraints - front seats	S
Side airbags, rear seats - head protection	O √ (S NZ)	Intelligent seat belt reminder - driver	S
Driver knee airbag	X	Intelligent seat belt reminder - front passenger	S
Front seat belt pretensioners	S	Rear seat belt status indicator	X

ESC required by ANCAP for 5 star rating from 2008

Key: √ = Fitted to vehicle that was crash tested (where not standard)

S = standard on all variants

O = optional on base variant. May be standard on higher variants

V = not available on base variant but standard or optional on higher variants

X = not available on any variant