

Crash Test Results

New Car Safety

MAZDA CX-5 (diesel)

From 2012 Front+side+head airbags



Offset crash test at 64km/h



ANCAP

Rated ★★★★★

Occupant Protection

Occupant Protection Score 35.10 out of 37

Variant: "Core" Eng: 2.2diesel, manual
Kerb mass 1590 kg Category: SUV - COMPACT
Vehicles built: 2012 Tested by Euro NCAP

Important note: The AWD diesel left-hand-drive European model was tested by Euro NCAP. Australasian specifications may vary and therefore models sold in Australasia might provide different levels of protection to those described on this page.

Model History and Safety Features

The tested model of Mazda CX-5 was introduced in Australia during 2012. This ANCAP rating applies to the all-wheel-drive diesel variant.

Dual front airbags, side airbags and head-protecting side curtains are standard equipment. Antilock brakes (ABS), electronic brakeforce distribution (EBD) and electronic stability control (ESC) are also standard. Intelligent seat belt reminders are fitted to all seats. Several other advanced safety features are also available.

OCCUPANT PROTECTION: 5 Stars

The MAZDA CX-5 scored 14.1 out of 16 in the offset crash test. The passenger compartment held its shape well. There was a moderate risk of serious leg injury for the driver.

The vehicle scored 16 out of 16 in the side impact crash test and a further two points in the pole test.

FRONTAL OFFSET CRASH TEST

Body region scores out of 4 points each: Head/neck 4 pts, chest 3.83 pts, upper legs 4 pts, lower legs 2.27 pts.

The passenger compartment held its shape well in the offset crash test. The brake pedal moved rearwards by 28 mm. The accelerator pedal moved upwards 1 mm. The steering wheel hub moved 53mm forward, 8mm downward and 9 mm sideways. The front ("A") pillar moved 4 mm rearwards. All doors remained closed during the crash. After the crash all doors could be opened with normal effort.

The airbags cushioned the head of the driver and passenger and contact was stable. There were no knee hazards.

SIDE IMPACT CRASH TEST

Body region scores out of 4 points each: Head 4 pts, chest 4 pts, abdomen 4 pts, pelvis 4 pts.

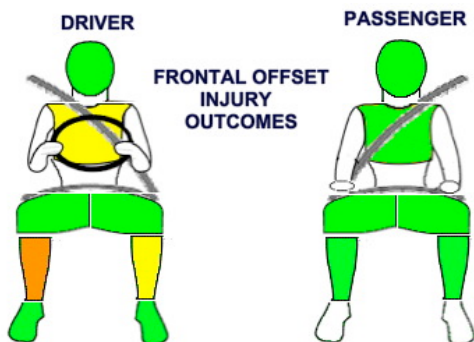
The vehicle was eligible for a pole impact test, since it had head-protecting side airbags. The vehicle earned the maximum two points in this test.

PEDESTRIAN PROTECTION: Acceptable

The bumper provided good protection to pedestrians and the car scored maximum points in this area. The front edge of the bonnet was at best marginal in the protection offered to pedestrians. In most areas where it might be struck by the head of a child or an adult, the bonnet provided good protection.

PEDESTRIAN PROTECTION	Child head impacts	9.02
ACCEPTABLE	Adult head impacts	8
	Upper leg impacts	0.18
	Lower leg impacts	6
	Total (out of 36)	23.19

Tested by Euro NCAP v5.3



FRONTAL OFFSET INJURY OUTCOMES



SIDE IMPACT INJURY OUTCOMES DRIVER



Whiplash Protection



KEY
PASS
MARGINAL
FAIL

JUNE 2012

PO Box 4041
Manuka ACT 2603

cx5_12.doc
Issued 30/05/2012



ANCAP

Crash testing for safety

AUSTRALASIAN
NEW CAR ASSESSMENT
PROGRAM

TECHNICAL DATA - MAZDA CX-5 - From 2012

INJURY MEASUREMENTS

Body region	Offset Crash Test at 64km/h (v5.2)		Side Impact Crash Test at 50km/h (v5.2)
	Driver	Passenger	Driver
Head HIC	240	170	23
Acceleration (g for 3ms)	37.4	35.4	14.8
Neck - Shear (kN)	0.27	0.41	-
Tension (kN)	1.29	0.74	-
Extension (Nm)	8.4	20.3	-
Chest Accln (g for 3ms)	-	-	-
Compression (mm)	23.16	17.00	6.80
Viscous criterion (m/s)	0.07	0.04	0.02
Abdomen - Force (kN)	-	-	0.360
Pelvis - Force (kN)	-	-	0.850
Upper legs Force (kN)			
Left	0.34	2.10	
Right	0.32	1.10	
Knee displ (mm)			
Left	0.00	2.80	
Right	0.30	3.50	
Lower legs Force (kN)			
Left	1.47	1.52	
Right	3.48	1.94	
Index (Upper/Low)			
Left	0.44 /0.37	0.28 /0.19	
Right	0.79 /0.38	0.21/0.19	

Bonus points (maximum 5)

Pole Test: 2 pts

Seat belt reminders: 3 (see table below for details)

Modifiers - deductions from offset test scores

Head	No deduction
Chest	No deduction
Upper leg	No deduction
Lower leg	No deduction
Foot score	Score 4 points

Modifiers - deductions from side impact test scores

Chest	No deduction
-------	--------------

Safety features

These specifications are subject to change. Please check with manufacturer for the latest specifications.



Driver airbag	S	Antilock (ABS) brakes / Electronic brake distribution / Brake Assist	S/S/S
Passenger front airbag	S	Electronic stability control (ESC, VSC, DSC, ESP, VSA)	S#
Side airbags, front seats - chest protection	S	3 point seat belt for all forward-facing seats	S
Side airbags, front seats - head protection	S	Whiplash protection (RCAR protocol)	Good
Side airbags, rear seats - head protection	S	Intelligent seat belt reminder - driver	S
Driver knee airbag	X	Intelligent seat belt reminder - front passenger	S
Seat belt pretensioners (Front/Rear outboard)	S/X	Intelligent seat belt reminder - rear seats	S

Key:

S = standard on all variants

O = optional on base variant. May be standard on higher variants

V= not available on base variant but standard or optional on higher variants

X = not available on any variant

ESC required by ANCAP for 5 star rating from 2008