

# ANCAP Safety Rating: MAZDA CX-3 (2015 onwards)



Frontal offset test at 64km/h (Euro NCAP)

## This ANCAP safety rating applies to:

<b>Make / Model</b>	Mazda Cx-3
<b>Year Range</b>	2015 onwards
<b>Variant(s)*</b>	All variants
<b>Vehicle Type</b>	Compact SUV

The Mazda CX-3 was introduced in Australia and New Zealand in March 2015. This ANCAP safety rating applies to all variants.

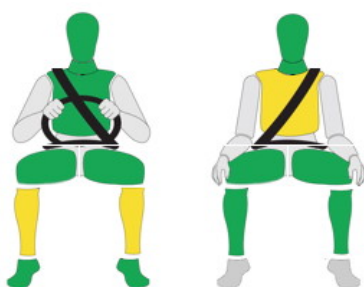
Dual frontal, side chest and side head airbags (curtains) are standard. Electronic Brake Distribution (EBD) and Emergency Brake Assist (EBA) are also standard. Autonomous Emergency Braking (AEB) and Blind Spot Warning are optional. Advanced seat belt reminders are fitted to all seats.

In the offset crash test driver and passenger leg protection was acceptable. Driver protection was good in the side impact crash test. Head protection in the side pole test was good.

## Injury Outcomes.

### Frontal Offset

Driver Passenger



### Side Impact & Pole\*

Driver



### Whiplash Protection

Driver



## Test Results Summary.

<b>Airbags</b>	Dual Frontal, Side, Head
<b>Frontal Offset Test</b>	15.44 (out of 16)
<b>Side Impact Test</b>	16.00 (out of 16)
<b>Pole Test</b>	2 (out of 2)
<b>Whiplash Protection</b>	Good
<b>Pedestrian Protection</b>	Good
<b>ESC</b>	Standard
<b>Seat Belt Reminders</b>	3.0 (out of 3)
<b>Overall Score</b>	36.44 (out of 37)
<b>ANCAP Safety Rating</b>	★★★★★
<b>Rating Year<sup>^</sup></b>	2015

## Occupant Protection.

### Frontal Offset Test

Each body region is scored out of 4 points

Head / neck:	4.00 points
Chest:	3.97 points
Upper legs:	4.00 points
Lower legs:	3.47 points

The passenger compartment held its shape well in the offset test. Pedal and steering wheel displacements were well controlled. Driver and passenger contact with the airbags was stable. All doors remained closed during the crash. After the crash all doors could be opened with normal effort.

### Side Impact Test

Each body region is scored out of 4 points

Head:	4.00 points
Chest:	4.00 points
Abdomen:	4.00 points
Pelvis:	4.00 points

Good protection was provided for the driver in the side impact test. The side airbags performed well.

### Pole Test

Scored out of 2 points

Score:	2.00 points
--------	-------------

The vehicle was eligible for a side pole test because it has side curtain airbags. The vehicle scored the maximum 2 points for head protection in this test.

### Whiplash Protection Test

Whiplash protection is assessed to the RCAR Protocol

Geometric test:	Good
Dynamic test:	Good
Overall whiplash rating:	Good

Tests conducted by Insurance Institute for Highway Safety.

\* Head protection only.

# ANCAP Safety Rating: MAZDA CX-3 (2015 onwards)



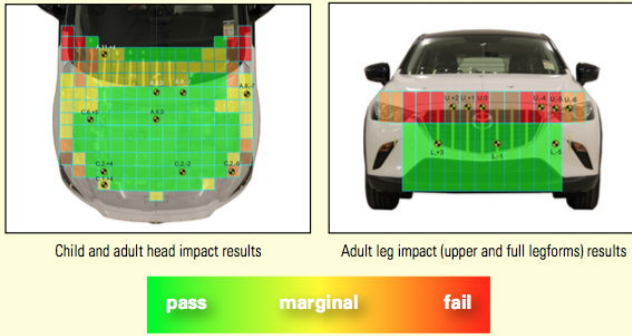
## Pedestrian Protection.

### Pedestrian Test

Scored out of 36 points

Adult & child head impacts: 20.05 points  
Upper leg impacts: 1.55 points  
Lower leg impacts: 6.00 points

This vehicle scored 27.59 out of 36 points (Good). Mostly good head protection was provided over the bonnet. Upper leg protection was poor to marginal. Lower leg protection was good (v8)



## Score Deductions.

### Deductions from frontal offset test scores

Head / neck: No deductions  
Chest: No deductions  
Upper legs: No deductions  
Lower legs: No deductions

### Deductions from side impact test score

Chest: No deductions.

### Deductions from pole test score

Head: No deductions.

## Safety Features & Technologies.

Descriptions of each of these safety features and safety assist technologies (SAT) and detail on fitting requirements for each star rating level can be found at [ancap.com.au](http://ancap.com.au).

Safety Feature / Safety Assist Technology	Availability
Seat belts (three-point) for all forward-facing seats	<b>S</b>
Seat belt pretensioners (front)	<b>S</b>
Seat belt pretensioners (rear outboard)	<b>X</b>
Intelligent seat belt reminder (driver)	<b>S</b>
Intelligent seat belt reminder (front passenger)	<b>S</b>
Intelligent seat belt reminder (2 <sup>nd</sup> row seats)	<b>S</b>
Airbag - Front (driver)	<b>S</b>
Airbag - Front (passenger)	<b>S</b>
Airbag - Side, chest protection (front seats)	<b>S</b>
Airbag - Side, chest protection (2 <sup>nd</sup> row seats)	<b>X</b>
Airbag - Side, head protection (front seats)	<b>S</b>
Airbag - Side, head protection (2 <sup>nd</sup> row seats)	<b>S</b>
Airbag - Knee (driver)	<b>X</b>
Airbag - Knee (front passenger)	<b>X</b>
Head restraints for all seats	<b>S</b>
Adaptive cruise control (ACC)	<b>X</b>
Antilock braking system (ABS)	<b>S</b>
Automatic headlights	<b>V</b>
Automatic high beam	<b>V</b>
Autonomous emergency braking (AEB)	<b>O</b>
Blind spot monitoring	<b>O</b>
Daytime running lights (DRL)	<b>V</b>
Electronic brakeforce distribution (EBD)	<b>S</b>
Electronic stability control (ESC)	<b>S</b>
Emergency brake assist (EBA)	<b>S</b>
Emergency stop signal	<b>S</b>
Hill launch assist	<b>S</b>
Lane support system (LSS)	<b>V</b>
Rear cross-traffic alert	<b>O</b>
Reversing collision avoidance	<b>V</b>
Tyre pressure monitoring system (TPMS)	<b>X</b>

These specifications are subject to change. Please check with the manufacturer for the latest specifications.

**S** = Standard on all variants.  
**O** = Optional on base variant. May be standard on higher variants.  
**V** = Not available on base variant but standard or optional on higher variants.  
**X** = Not available on any variant.  
**E** = Available in Europe / USA but not available on any Australasian variant.

# ANCAP Safety Rating: MAZDA CX-3 (2015 onwards)



## Injury Values & Measurements.

Body Region	Frontal offset test at 64 km/h (v5.1)		Side impact test at 50 km/h (v5.1)
	Driver	Passenger	Driver
<b>Head</b>			
HIC	225.00	224.00	23.00
Acceleration (g for 3ms)	34.90	35.90	14.50
<b>Neck</b>			
Shear (kN)	0.25	0.29	-
Tension (kN)	0.66	0.42	-
Extension (Nm)	20.00	24.90	-
<b>Chest</b>			
Acceleration (g for 3ms)	-	-	-
Compression (mm)	21.10	22.20	21.60
Viscous criterion (m/s)	0.06	0.08	0.14
<b>Abdomen</b>			
Force (kN)	-	-	0.65
<b>Pelvis</b>			
Force (kN)	-	-	1.28
<b>Upper legs</b>			
Femur force left (kN)	0.38	0.22	
Femur force right (kN)	0.27	0.27	
Knee displacement left (mm)	0.20	0.04	
Knee displacement right (mm)	0.32	0.39	
<b>Lower legs</b>			
Force left (kN)	1.83	1.06	
Force right (kN)	2.39	1.82	
Index (upper / lower) left	0.52 / 0.33	0.27 / 0.13	
Index (upper / lower) right	0.51 / 0.34	0.37 / 0.31	
<b>Intrusion Measurements*</b>			
<b>Steering column</b>			
Forward (mm)	61		
Downward (mm)	4		
Sideways (mm)	6		
<b>Pedals</b>			
Brake - rearward (mm)	5		
Brake - upward (mm)	2		
<b>A-Pillar</b>			
Rearward (mm)	0		

+ Steering column and pedal movements are measured relative to the driver's seat.

\* ANCAP safety ratings do not automatically extend to variants that have different body styles, engine configurations, driven wheels or occupant restraint systems (e.g. fewer airbags). In these cases, ANCAP considers technical evidence submitted by manufacturers before deciding on extending a rating to additional variants of a model. For further information about the application of ANCAP safety ratings to model variants, see the ANCAP Variant Policy.

^ The Rating Year denotes the year requirements against which a vehicle has been assessed. The Rating Year is determined by ANCAP and may be based on the year in which a new vehicle model is first launched into the Australian and/or New Zealand markets; the year in which the vehicle was tested (if tested by Euro NCAP); or, for vehicles which hold an existing ANCAP safety rating, the year in which the rating was updated (or earlier applicable year).

## Assessment Details.

<b>Tested Make / Model</b>	Mazda CX-3
<b>Tested Vehicle(s) Built</b>	2015
<b>Tested Body Type</b>	Wagon
<b>Tested Vehicle Kerb Weight</b>	1200 kg
<b>Tested Vehicle Engine</b>	2.0 petrol
<b>Tested By</b>	ANCAP
<b>Assessed By</b>	ANCAP
<b>Document Reference</b>	CX3_15
<b>Rating Published</b>	September 2015
<b>Document created/revised</b>	28/8/2015

