

Crash Test Results

New Car Safety

LAND ROVER FREELANDER 2 (LHD)

2007 on

Front+side+head airbags



Offset crash test at 64km/h

FRONTAL OFFSET CRASH TEST (v4.1)

Body region scores out of 4 points each: Head/neck 4 pts, chest 2.92 pts, upper legs 4 pts, lower legs 4 pts.

The passenger compartment held its shape well in the offset crash test. The accelerator pedal moved rearwards by 28 mm and upwards 8 mm. The steering wheel hub moved forwards 56mm, downwards 16mm and sideways 2 mm. The front ("A") pillar moved 4 mm rearwards. All doors remained closed during the crash. After the crash high manual effort was required to open the driver's door.


The airbag cushioned the head of the driver and contact was stable. There were no knee hazards. The passenger's head was cushioned by the airbag.

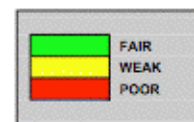
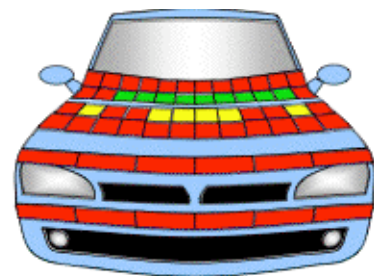
SIDE IMPACT CRASH TEST (v4.1)

Body region scores out of 4 points each: Head 4 pts, chest 3.92 pts, abdomen 4 pts, pelvis 4 pts.

The vehicle was eligible for an optional pole impact test, since it had head-protecting side airbags and scored four points for the head in the side impact test. The manufacturer decided to go ahead with the pole test and the vehicle earned a further two points.

PEDESTRIAN PROTECTION RATING (v4.1)

PEDESTRIAN PROTECTION		
 ANCAP Rated ★ ★ ★ ★	Child head impacts	2.68
	Adult head impacts	4.5
	Upper leg impacts	Zero
	Lower leg impacts	Zero
	Total (out of 36)	7.18




ANCAP Occupant Protection
 Rated ★ ★ ★ ★ ★

Occupant Protection Score 34.84 out of 37

Variant: TD4

Eng: 2.2 diesel

Kerb weight: 1820 kg

Category: 4WD

Vehicles built: 2007

Important note: The *diesel left-hand-drive* European model was tested by Euro NCAP. Australasian specifications may vary and therefore models sold in Australasia might provide different levels of protection to those described on this page.

Model History and Safety Features

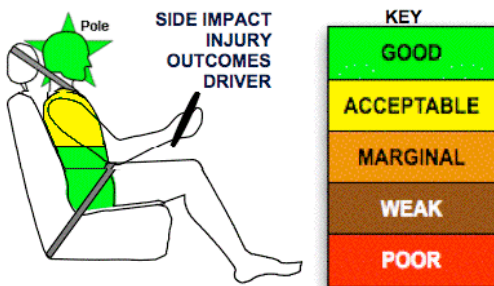
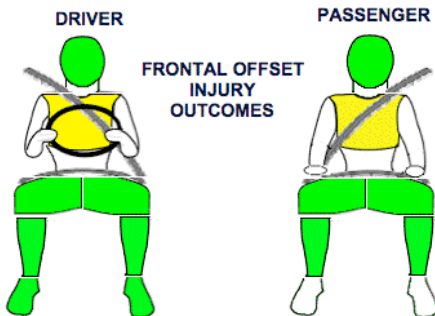
The tested model of Land Rover Freelander 2 was introduced in Australia during 2007.

Dual front airbags, side airbags and head-protecting side curtains are standard equipment. Antilock brakes (ABS), electronic brake distribution (EBD) and electronic stability control (ESC) are also standard. Intelligent seat belt reminders are fitted to both front seats.

The front seat belt buckles are mounted on the seats and the upper anchorages are adjustable. These features improve the fit of the seat belt. Pre-tensioners are fitted to the front seat belts to reduce slack in the event of a crash. A three point seat belt is fitted to the centre rear seat. This provides better protection than a two point (lap) seat belt.

OCCUPANT PROTECTION: 5.000 Stars

The Land Rover Freelander 2 scored 14.92 out of 16 in the offset crash test. The passenger compartment held its shape well. There was a slight risk of serious chest injury for the driver. The vehicle scored 15.92 out of 16 in the side impact crash test and 2 points in the optional pole test.



June 2007

PO Box 1555

Canberra ACT

Australia 2601

freelander07.doc

Issued 6/6/07



ANCAP

Crash testing for safety

AUSTRALASIAN
NEW CAR ASSESSMENT
PROGRAM

TECHNICAL DATA - LANDROVER FREELANDER 2 (LHD) - 2007 on

INJURY MEASUREMENTS

Body region	Offset Crash Test at 64km/h (v4.1)		Side Impact Crash Test at 50km/h (v4.1)
	Driver	Passenger	Driver
Head HIC	306	259	19
Acceleration (g for 3ms)	41.5	37.4	16.5
Neck - Shear (kN)	0.25	0.35	-
Tension (kN)	1.01	0.77	-
Extension (Nm)	7.6	10.8	-
Chest Accln (g for 3ms)	-	-	-
Compression (mm)	28.19	29.59	20.18
Viscous criterion (m/s)	0.10	0.10	0.09
Abdomen - Force (kN)	-	-	0.100
Pelvis - Force (kN)	-	-	0.950
Upper legs Force			
Left (kN)	1.81	1.48	
Right (kN)	0.48	0.26	
Knee displ (mm)			
Left	3.00	3.80	
Right	0.00	1.40	
Lower legs Force			
Left (kN)	1.60	1.22	
Right (kN)	1.45	1.12	
Index (Upper/Low)			
Left	0.14 /0.12	0.18 /0.19	
Right	0.31 /0.10	0.27/0.11	

Bonus points (maximum 5)

Pole Test: 2 pts

Seat belt reminders: 2 (see table below for details)

Modifiers - deductions from offset test scores

Head	No deduction
Chest	No deduction
Upper leg Variable & conc. loading	No deduction
Lower leg	No deduction
Foot score	Score 4 points



Modifiers - deductions from side impact test scores

Chest	No deduction
-------	--------------

Safety features

These specifications are subject to change. Please check with manufacturer for the latest specifications.

Driver airbag	S	Antilock (ABS) brakes / Electronic brake distribution	S/S
Passenger front airbag	S	Electronic stability control (ESC, VSC, DSC, ESP, VSA)	S
Side airbags, front seats - chest protection	S	3 point centre rear seat belt	S
Side airbags, front seats - head protection	S	Active head restraints - front seats	
Side airbags, rear seats - head protection		Intelligent seat belt reminder - driver	S
Driver knee airbag	S	Intelligent seat belt reminder - front passenger	S
Front seat belt pretensioners	S	Rear seat belt status indicator	X

Key:

S = standard on all variants

O = optional on base variant. May be standard on higher variants

V= not available on base variant but standard or optional on higher variants

X = not available on any variant