

# Crash Test Results

## New Car Safety

### KIA SPORTAGE (all variants)

From Oct 2010 Front+side+head airbags



**ANCAP** Occupant Protection  
Rated ★★★★★

**Occupant Protection Score 35.10 out of 37**

Tested variant: 4WD

Eng: 2 litre diesel

Kerb mass 1630 kg

Category: SUV - MEDIUM

Vehicles built: 2010

Tested by Euro NCAP

**Important note:** The *diesel left-hand-drive* European model was tested by Euro NCAP. Australasian specifications may vary and therefore models sold in Australasia might provide different levels of protection to those described on this page.

#### Model History and Safety Features

The tested model of Kia Sportage was introduced in Australia during 2010. This rating applies to all variants of the Sportage with 4 cylinder diesel or petrol engines.

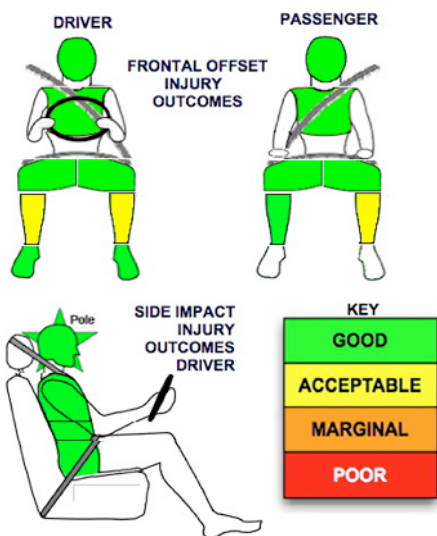
Dual front airbags, side airbags and head-protecting side curtains are standard equipment. Antilock brakes (ABS), electronic brakeforce distribution (EBD) and electronic stability control (ESC) are also standard. Intelligent seat belt reminders are fitted to both front seats. A rearview camera is available.

Pretensioners are fitted to the front seat belts to reduce slack in the event of a crash. A three point seat belt is fitted to the centre rear seat.

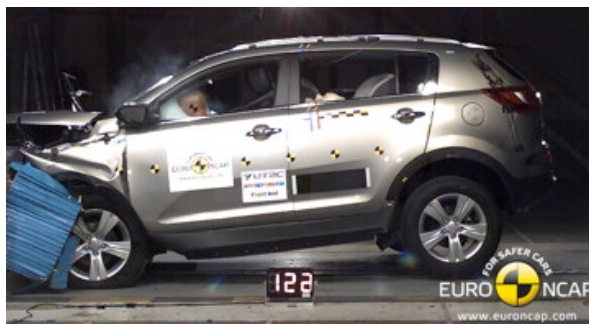
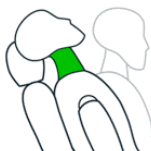
#### OCCUPANT PROTECTION: 5 Stars

The Sportage scored 15.1 out of 16 in the offset crash test. The passenger compartment held its shape well. There was a slight risk of serious lower leg injury. All other body regions had good protection.

The vehicle scored 16 out of 16 in the side impact crash test and a further two points in the optional pole test.



#### Whiplash Protection



Offset crash test at 64km/h

#### FRONTAL OFFSET CRASH TEST

Body region scores out of 4 points each: Head/neck 4 pts, chest 4 pts, upper legs 4 pts, lower legs 3.1 pts.

The passenger compartment held its shape well in the offset crash test. The brake pedal moved rearwards by 60 mm and upwards 23 mm. The steering wheel hub moved 28mm forward, 5 mm upward and 4 mm sideways. The front ("A") pillar had no rearward displacement. All doors remained closed during the crash. After the crash all doors could be opened with normal effort.

The airbag cushioned the head of the driver and contact was stable. There were no knee hazards. The passenger's head was cushioned by the airbag.

#### SIDE IMPACT CRASH TEST

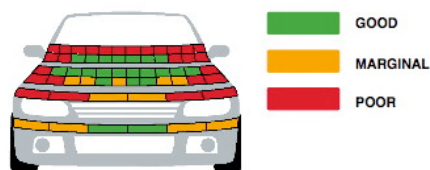
Body region scores out of 4 points each: Head 4 pts, chest 4 pts, abdomen 4 pts, pelvis 4 pts.

The vehicle was eligible for an optional pole impact test, since it had head-protecting side airbags. The vehicle earned the maximum two points in this test.

#### PEDESTRIAN PROTECTION: Marginal

The bumper provided mixed protection to pedestrians' legs. The front edge of the bonnet provided predominantly poor protection. In most of the areas likely to be struck by a child's head, the bonnet offered good levels of protection. However, for an adult's head, most of the areas tested showed poor protection.

PEDESTRIAN PROTECTION	Child head impacts	8.08
<b>MARGINAL</b> Tested by Euro NCAP v5	Adult head impacts	3.5
	Upper leg impacts	1.2
	Lower leg impacts	4.91
	Total (out of 36)	17.69



www.ancap.com.au

JANUARY 2011

PO Box 4041

Manuka ACT 2603

sportage10.doc

Revised 31/3/2011



**ANCAP**

Crash testing for safety

AUSTRALASIAN  
NEW CAR ASSESSMENT  
PROGRAM

# TECHNICAL DATA - KIA SPORTAGE (4WD) - Oct 2010 on

## INJURY MEASUREMENTS

Body region	Offset Crash Test at 64km/h (v5.1)		Side Impact Crash Test at 50km/h (v5.1)
	Driver	Passenger	Driver
<b>Head</b> HIC	413	457	21
Acceleration (g for 3ms)	51.8	49.6	15.4
<b>Neck</b> - Shear (kN)	0.36	0.34	-
Tension (kN)	1.72	1.17	-
Extension (Nm)	12.9	9.0	-
<b>Chest</b> Accln (g for 3ms)	-	-	-
Compression (mm)	21.90	18.30	8.47
Viscous criterion (m/s)	0.06	0.06	0.03
<b>Abdomen</b> - Force (kN)	-	-	0.320
<b>Pelvis</b> - Force (kN)	-	-	0.730
<b>Upper legs</b> Force (kN)			
Left	0.64	0.80	
Right	0.83	0.30	
Knee displ (mm)			
Left	0.50	1.80	
Right	0.00	0.00	
<b>Lower legs</b> Force (kN)			
Left	2.43	2.37	
Right	3.35	1.97	
Index (Upper/Low)			
Left	0.41 /0.48	0.33 /0.29	
Right	0.40 /0.29	0.29/0.27	

### Bonus points (maximum 5)

Pole Test: 2 pts

Seat belt reminders: 2 (see table below for details)

### Modifiers - deductions from offset test scores

Head	No deduction
Chest	No deduction
Upper leg Variable & conc. loading	No deduction
Lower leg	No deduction
Foot score	Score 4 points

### Modifiers - deductions from side impact test scores

Chest	No deduction
-------	--------------

### Safety features

These specifications are subject to change. Please check with manufacturer for the latest specifications.



Driver airbag	S	Antilock (ABS) brakes / Electronic brake distribution / Brake Assist	S/S/S
Passenger front airbag	S	Electronic stability control (ESC, VSC, DSC, ESP, VSA)	S#
Side airbags, front seats - chest protection	S	3 point centre rear seat belt	S
Side airbags, front seats - head protection	S	Whiplash rating (RCAR protocol)	Good
Side airbags, rear seats - head protection	S	Intelligent seat belt reminder - driver	S
Driver knee airbag	X	Intelligent seat belt reminder - front passenger	S
Seat belt pretensioners (Front/Rear outboard)	S/X	Intelligent seat belt reminder - rear seats	X*

Key: \* Rear seat belt reminder is standard in Europe

S = standard on all variants

O = optional on base variant. May be standard on higher variants

V= not available on base variant but standard or optional on higher variants

X = not available on any variant

# ESC required by ANCAP for 5 star rating from 2008