

Crash Test Results

New Car Safety

KIA SOUL

June 2010 on Front+side+head airbags



ANCAP Occupant Protection
Rated ★★★★★

Occupant Protection Score 33.11 out of 37

Variant: EX

Eng: 1.6 petrol

Kerb weight: 1170 kg

Category: CAR - SMALL

Vehicles built: 2009

Tested by Euro NCAP

Important note: The *left-hand-drive* European model was tested by Euro NCAP. Australasian specifications may vary and therefore models sold in Australasia might provide different levels of protection to those described on this page.

Model History and Safety Features

The tested model of Kia Soul was introduced in Australia and New Zealand during 2009. This 5-star rating applies to all New Zealand models. It also applies to Australian models built from June 2010 when ESC and seat belt reminders for all seats were introduced. A separate ANCAP 4-star rating applies to earlier Australian models.

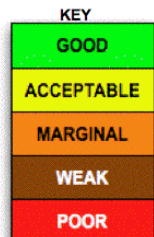
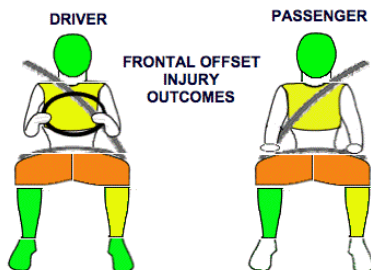
Dual front airbags, side airbags and head-protecting side curtains are standard equipment. Antilock brakes (ABS) with electronic brakeforce distribution (EBD) and emergency brake assist are also standard. Electronic stability control (ESC) and intelligent seat belt reminders for all seats have been standard in New Zealand since the model launch in 2009. These features became standard in Australia from June 2010.

Pretensioners are fitted to the front seat belts to reduce slack in the event of a crash. A three point seat belt is fitted to the centre rear seat. This provides better protection than a two point (lap) seat belt.

OCCUPANT PROTECTION: 5 Stars

The Kia Soul scored 13.11 out of 16 in the offset crash test. The passenger compartment held its shape well. Protection from serious leg injury was marginal for the driver and passenger.

The vehicle scored 15 out of 16 in the side impact crash test and a further 2 points in the optional pole test.



Offset crash test at 64km/h

FRONTAL OFFSET CRASH TEST (v4.2)

Body region scores out of 4 points each: Head/neck 4 pts, chest 3.20 pts, upper legs 2 pts, lower legs 3.91 pts.

The passenger compartment held its shape well in the offset crash test. The brake pedal moved rearwards by 63 mm and upwards 21 mm. The steering wheel hub moved 35mm forward, 64mm downward and 3 mm sideways. The front ("A") pillar moved 12 mm rearwards. All doors remained closed during the crash. After the crash the driver's door could be opened with high manual effort.

The airbag cushioned the head of the driver and contact was stable. Dash components were a potential source of injury for the driver and passenger knees. The passenger's head was cushioned by the airbag.

SIDE IMPACT CRASH TEST (v4.2)

Body region scores out of 4 points each: Head 4 pts, chest 4 pts, abdomen 4 pts, pelvis 4 pts.

A rear door partially opened during the side impact test, resulting in a 1 point deduction.

The vehicle was eligible for an optional pole impact test, since it had head-protecting side airbags. The manufacturer decided to go ahead with the pole test and the vehicle earned a further two points.

PEDESTRIAN PROTECTION: 2 Stars

The front edge of the bonnet offered poor protection to pedestrians' legs. In most areas likely to be hit by a pedestrian's head, the bonnet also provided poor protection. Only the bumper offered predominantly good protection against injury.

PEDESTRIAN PROTECTION		
<p>Rated ★★☆☆☆ Tested by Euro NCAP v4.2</p>	Child head impacts	5
	Adult head impacts	3
	Upper leg impacts	Zero
	Lower leg impacts	5.89
	Total (out of 36)	13.89



GOOD
ADEQUATE
MARGINAL

September 2010

PO Box 4041

Manuka ACT 2603

soul10.doc

Issued 2/9/2010



ANCAP

Crash testing for safety

AUSTRALASIAN
NEW CAR ASSESSMENT
PROGRAM

TECHNICAL DATA - KIA SOUL - June 2010 on

INJURY MEASUREMENTS

Body region	Offset Crash Test at 64km/h (v4.2)		Side Impact Crash Test at 50km/h (v4.2)
	Driver	Passenger	Driver
Head HIC	361	269	55
Acceleration (g for 3ms)	43.3	44.1	26.2
Neck - Shear (kN)	0.32	0.60	-
Tension (kN)	1.39	1.17	-
Extension (Nm)	19.3	17.4	-
Chest Accln (g for 3ms)	-	-	-
Compression (mm)	27.59	22.93	19.12
Viscous criterion (m/s)	0.10	0.06	0.11
Abdomen - Force (kN)	-	-	0.730
Pelvis - Force (kN)	-	-	1.580
Upper legs Force (kN)			
Left	0.08	2.10	
Right	0.34	0.70	
Knee displ (mm)			
Left	0.00	0.90	
Right	0.00	0.00	
Lower legs Force (kN)			
Left	1.61	2.14	
Right	1.00	1.45	
Index (Upper/Low)			
Left	0.41 /0.29	0.24 /0.24	
Right	0.27 /0.21	0.22/0.28	

Bonus points (maximum 5)

Pole Test: 2 points

Seat belt reminders: 3

Modifiers - deductions from offset test scores

Head	No deduction
Chest	No deduction
Upper leg Variable & conc. loading for driver and passenger	2 pt deduction Left & Right
Lower leg	No deduction
Foot score	Score 4 points

Modifiers - deductions from side impact test scores

Chest	No deduction
Door opened during crash	1 pt deduction

Safety features (from June 2010)

These specifications are subject to change. Please check with manufacturer for the latest specifications.



Driver airbag	S	Antilock (ABS) brakes / Electronic brake distribution / Brake Assist	S/S/S
Passenger front airbag	S	Electronic stability control (ESC, VSC, DSC, ESP, VSA)	S#
Side airbags, front seats - chest protection	S	3 point centre rear seat belt	S
Side airbags, front seats - head protection	S	Active head restraints - front seats	S
Side airbags, rear seats - head protection	S	Intelligent seat belt reminder - driver	S
Driver knee airbag	X	Intelligent seat belt reminder - front passenger	S
Seat belt pretensioners (Front/Rear outboard)	S/X	Rear seat belt status indicator	S

Key:

S = standard on all variants

O = optional on base variant. May be standard on higher variants

V= not available on base variant but standard or optional on higher variants

X = not available on any variant

ESC required by ANCAP for 5 star rating from 2008