

# Crash Test Results

## New Car Safety

### KIA SOUL (LHD) Australia

2009 on

Front+side+head airbags



Offset crash test at 64km/h

#### FRONTAL OFFSET CRASH TEST (v4.2)

Body region scores out of 4 points each: Head/neck 4 pts, chest 3.20 pts, upper legs 2 pts, lower legs 3.91 pts.

The passenger compartment held its shape well in the offset crash test. The brake pedal moved rearwards by 63 mm and upwards 21 mm. The steering wheel hub moved 35mm forward, 64mm downward and 3 mm sideways. The front ("A") pillar moved 12 mm rearwards. All doors remained closed during the crash. After the crash the driver's door could be opened with high manual effort.

The airbag cushioned the head of the driver and contact was stable. Dash components were a potential source of injury for the driver and passenger knees. The passenger's head was cushioned by the airbag.

#### SIDE IMPACT CRASH TEST (v4.2)

Body region scores out of 4 points each: Head 4 pts, chest 4 pts, abdomen 4 pts, pelvis 4 pts.

A rear door partially opened during the side impact test, resulting in a 1 point deduction.

In Europe the vehicle was eligible for an optional pole impact test and this was successfully conducted, with 2 points scored. However ANCAP only counts the pole test score for potential 5 star ratings and the Australian Soul is not eligible.

#### PEDESTRIAN PROTECTION: 2 Stars

The front edge of the bonnet offered poor protection to pedestrians' legs. In most areas likely to be hit by a pedestrian's head, the bonnet also provided poor protection. Only the bumper offered predominantly good protection against injury.

**Occupant Protection Score 29.11 out of 37**

Variant: EX

Eng: 1.6 petrol

Kerb weight: 1170 kg

Category: CAR - SMALL

Vehicles built: 2009

Tested by Euro NCAP

**Important note:** The *left-hand-drive* European model was tested by Euro NCAP. Australasian specifications may vary and therefore models sold in Australasia might provide different levels of protection to those described on this page.

#### Model History and Safety Features

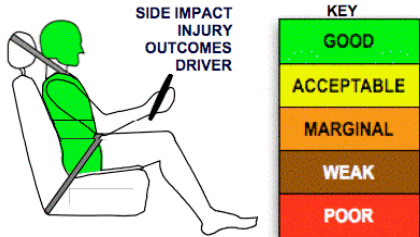
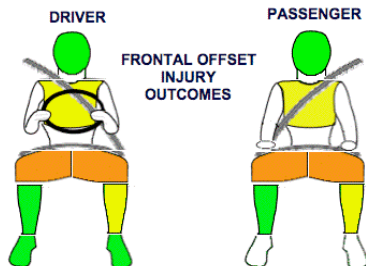
The tested model of Kia Soul was introduced in Australia during 2009. This rating applies to the base-model Soul in Australia. A separate ANCAP rating (5 stars) applies to the New Zealand model, which has more safety features.


Dual front airbags, side airbags and head-protecting side curtains are standard equipment. Antilock brakes (ABS) with electronic brakeforce distribution (EBD) and emergency brake assist are also standard. Electronic stability control (ESC) is only available on Soul Squared and Sol Cubed and not the base model. An intelligent seat belt reminder is fitted to the driver seat. The front seat belt buckles are mounted on the seats and the upper anchorages are adjustable. These features improve the fit of the seat belt. Pretensioners are fitted to the front seat belts to reduce slack in the event of a crash. A three point seat belt is fitted to the centre rear seat. This provides better protection than a two point (lap) seat belt.

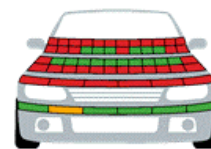
#### OCCUPANT PROTECTION: 4 Stars

The Kia Soul scored 13.11 out of 16 in the offset crash test. The passenger compartment held its shape well. Protection from serious leg injury was marginal for the driver and passenger.

The vehicle scored 15 out of 16 in the side impact crash test.



PEDESTRIAN PROTECTION		
 <b>ANCAP</b> Rated ★ ★ ★ ★ ★ Tested by Euro NCAP v4.2	Child head impacts	5
	Adult head impacts	3
	Upper leg impacts	Zero
	Lower leg impacts	5.89
	Total (out of 36)	13.89



GOOD  
ADEQUATE  
MARGINAL

June 2009

PO Box 4041

Manuka ACT 2603

soul09.doc

Issued 3/6/2009



**ANCAP**

Crash testing for safety

AUSTRALASIAN  
NEW CAR ASSESSMENT  
PROGRAM

# TECHNICAL DATA - KIA SOUL (Australian) - 2009 on

## INJURY MEASUREMENTS

Body region	Offset Crash Test at 64km/h (v4.2)		Side Impact Crash Test at 50km/h (v4.2)
	Driver	Passenger	Driver
<b>Head HIC</b>	361	269	55
Acceleration (g for 3ms)	43.3	44.1	26.2
<b>Neck - Shear (kN)</b>	0.32	0.60	-
Tension (kN)	1.39	1.17	-
Extension (Nm)	19.3	17.4	-
<b>Chest Accln (g for 3ms)</b>	-	-	-
Compression (mm)	27.59	22.93	19.12
Viscous criterion (m/s)	0.10	0.06	0.11
<b>Abdomen - Force (kN)</b>	-	-	0.730
<b>Pelvis - Force (kN)</b>	-	-	1.580
<b>Upper legs Force (kN)</b>			
Left	0.08	2.10	
Right	0.34	0.70	
Knee displ (mm)			
Left	0.00	0.90	
Right	0.00	0.00	
<b>Lower legs Force (kN)</b>			
Left	1.61	2.14	
Right	1.00	1.45	
Index (Upper/Low)			
Left	0.41 /0.29	0.24 /0.24	
Right	0.27 /0.21	.22/0.28	

### Bonus points (maximum 5)

Pole Test: Australian model not eligible for bonus points (The New Zealand and European models scored 2 points)

Seat belt reminders: 1 (The New Zealand and European models scored 3 points which gained them a 5-star rating).

### Modifiers - deductions from offset test scores

Head	No deduction
Chest	No deduction
Upper leg Variable & conc. loading for driver and passenger	2 pt deduction Left & Right
Lower leg	No deduction
Foot score	Score 4 points

### Modifiers - deductions from side impact test scores

Chest	No deduction
Door opens during crash	1 pt deduction

### Safety features

These specifications are subject to change. Please check with manufacturer for the latest specifications.

Driver airbag	S	Antilock (ABS) brakes / Electronic brake distribution / Brake Assist	S//S/S
Passenger front airbag	S	Electronic stability control (ESC, VSC, DSC, ESP, VSA)	V# (S NZ)
Side airbags, front seats - chest protection	S	3 point centre rear seat belt	S
Side airbags, front seats - head protection	S	Active head restraints - front seats	S
Side airbags, rear seats - head protection	S	Intelligent seat belt reminder - driver	S
Driver knee airbag	X	Intelligent seat belt reminder - front passenger	X (S NZ)
Seat belt pretensioners (Front/Rear outboard)	S/X	Rear seat belt status indicator	X (S NZ)

Key:

S = standard on all variants

O = optional on base variant. May be standard on higher variants

V= not available on base variant but standard or optional on higher variants

X = not available on any variant

# ESC required by ANCAP for 5 star rating from 2008

