

Crash Test Results

New Car Safety

KIA SORENTO (DIESEL)

2010 on

Front+side+head airbags



Offset crash test at 64km/h

FRONTAL OFFSET CRASH TEST (v4.2)

Body region scores out of 4 points each: Head/neck 4 pts, chest 3.27 pts, upper legs 3 pts, lower legs 2.98 pts.

The passenger compartment held its shape well in the offset crash test. The brake pedal moved rearwards by 77 mm and upwards 8 mm. The steering wheel hub moved 15mm forward, 10mm downward and 17 mm sideways. The front ("A") pillar moved 9 mm rearwards. All doors remained closed during the crash. After the crash the driver's door could be opened with high manual effort.

The airbag cushioned the head of the driver and contact was stable. Steering column components were a potential source of injury for the driver's knees. The passenger's head was cushioned by the airbag.

SIDE IMPACT CRASH TEST (v4.2)

Body region scores out of 4 points each: Head 4 pts, chest 3.96 pts, abdomen 4 pts, pelvis 4 pts.

The vehicle was eligible for an optional pole impact test. The manufacturer decided to go ahead with the pole test and the vehicle earned a further two points.

PEDESTRIAN PROTECTION: 2 Stars

Pedestrian protection was generally poor. The rear of the bonnet and centre of the bumper provided good protection



Occupant Protection Score 33.21 out of 37

Variant: European EX 5 seats Eng: 2.2 diesel
Kerb weight: 1870 kg Category: 4WD - LARGE
Vehicles built: 2009 Tested by Euro NCAP

Important note: The diesel left-hand-drive European model was tested by Euro NCAP. Australasian specifications may vary and therefore models sold in Australasia might provide different levels of protection to those described on this page.

Model History and Safety Features

The tested model of Kia Sorento was introduced in Australia during 2009. In 2010 a passenger seat belt reminder and a dual pretensioner on the driver seat were introduced on the Australian model. This 5-star ANCAP rating applies to diesel 4WD Sorentos with these added safety features.


Dual front airbags, side airbags and head-protecting side curtains are standard equipment. Antilock brakes (ABS), electronic brakeforce distribution (EBD) and electronic stability control (ESC) are also standard. Intelligent seat belt reminders are fitted to both front seats.

Pretensioners are fitted to the front seat belts to reduce slack in the event of a crash. A three point seat belt is fitted to the centre rear seat. This provides better protection than a two point (lap) seat belt.

OCCUPANT PROTECTION: 5 Stars

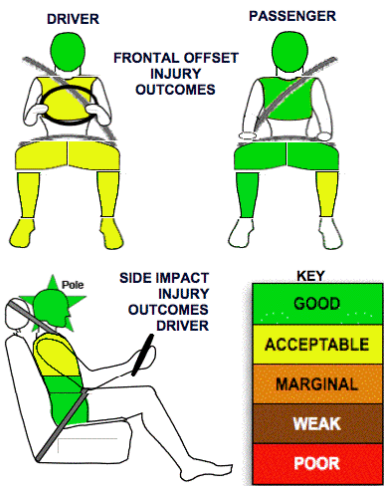
The KIA SORENTO scored 13.25 out of 16 in the offset crash test. The passenger compartment held its shape well. All injury ratings were good or acceptable.

The vehicle scored 15.96 out of 16 in the side impact crash test. There was a slight risk of serious chest injury for the driver. A further two points were scored in the optional pole test.

PEDESTRIAN PROTECTION		
 ANCAP Rated ★ ★ ★ ★	Child head impacts	4.11
	Adult head impacts	6.07
	Upper leg impacts	Zero
	Lower leg impacts	5.72
	Total (out of 36)	15.90



GOOD
ADEQUATE
MARGINAL



March 2010

PO Box 4041
Manuka ACT 2603
sorento10.doc
Issued 25/3/2010



ANCAP

Crash testing for safety

AUSTRALASIAN
NEW CAR ASSESSMENT
PROGRAM

TECHNICAL DATA - KIA SORENTO DIESEL - 2010 on

INJURY MEASUREMENTS

Body region	Offset Crash Test at 64km/h (v4.2)		Side Impact Crash Test at 50km/h (v4.2)
	Driver	Passenger	Driver
Head HIC	404	343	30
Acceleration (g for 3ms)	47.9	42.7	20.7
Neck - Shear (kN)	0.29	0.65	-
Tension (kN)	1.57	0.90	-
Extension (Nm)	12.3	2.9	-
Chest Accln (g for 3ms)	-	-	-
Compression (mm)	27.09	16.87	22.21
Viscous criterion (m/s)	0.11	0.09	0.19
Abdomen - Force (kN)	-	-	0.64
Pelvis - Force (kN)	-	-	0.82
Upper legs Force (kN)			
Left	0.08	1.70	
Right	2.29	0.30	
Knee displ (mm)			
Left	0.00	3.40	
Right	1.30	0.60	
Lower legs Force (kN)			
Left	1.53	2.36	
Right	2.25	1.61	
Index (Upper/Low)			
Left	0.52 /0.20	0.28 /0.26	
Right	0.63 /0.29	0.21/0.2	

Bonus points (maximum 5)

Pole Test: 2

Seat belt reminders: 2 (see table below for details)

Modifiers - deductions from offset test scores

Head	No deduction
Chest	No deduction
Upper leg Variable contact	0.5 pt Left, 1 pt Right
Lower leg	No deduction
Foot score Blocked pedal	Score 3.83 points

Modifiers - deductions from side impact test scores

Chest	No deduction
-------	--------------

Safety features

These specifications are subject to change. Please check with manufacturer for the latest specifications.



Driver airbag	S	Antilock (ABS) brakes / Electronic brake distribution / Brake Assist	S/S/X
Passenger front airbag	S	Electronic stability control (ESC, VSC, DSC, ESP, VSA)	S#
Side airbags, front seats - chest protection	S	3 point centre rear seat belt	S
Side airbags, front seats - head protection	S	Active head restraints - front seats	S
Side airbags, rear seats - head protection	S	Intelligent seat belt reminder - driver	S
Driver knee airbag	X	Intelligent seat belt reminder - front passenger	S*
Seat belt pretensioners (Front/Rear outboard)	S*/X	Intelligent seat belt reminder - rear seats	X

Key: * Dual pretensioner on driver's seat belt and seat belt reminder for front passenger added from 2010.

S = standard on all variants

O = optional on base variant. May be standard on higher variants

V= not available on base variant but standard or optional on higher variants

X = not available on any variant

ESC required by ANCAP for 5 star rating from 2008