

Crash Test Results

New Car Safety

KIA SORENTO (LHD)

2007 on

Dual front airbags



ANCAP Occupant Protection
Rated ★★★★★

Occupant Protection Score 24.52 out of 37

Variante: GLS

Eng: 2.5 Diesel

Kerb weight: 2115 kg

Category: 4WD - LARGE

Vehicles built: 2003

Tested by Euro NCAP

Important note: The *diesel left-hand-drive* European model was tested by Euro NCAP. Australasian specifications may vary and therefore models sold in Australasia might provide different levels of protection to those described on this page.

Model History and Safety Features

The tested model of Kia Sorento was introduced in Australia during 2005. This rating applies to models built from 2007.

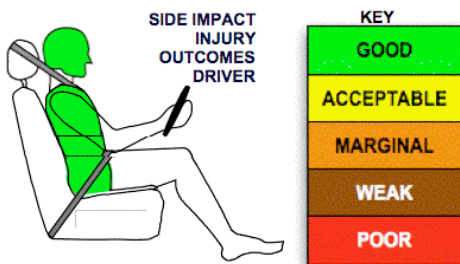
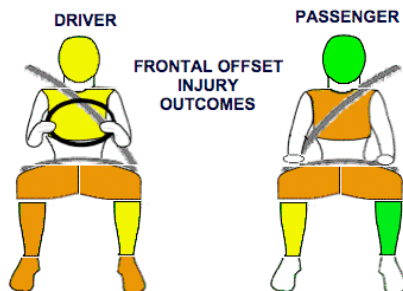
Dual front airbags are standard equipment. Antilock brakes (ABS) with electronic brakeforce distribution (EBD) are also standard. Side airbags, head-protecting side curtains and electronic stability control (ESC) are standard on the EX Limited variant. The EX variant also has ESC.

The front seat belt buckles are mounted on the seats and the upper anchorages are adjustable. These features improve the fit of the seat belt. Pretensioners are fitted to the front seat belts to reduce slack in the event of a crash. A three point seat belt is fitted to the centre rear seat. This provides better protection than a two point (lap) seat belt.

OCCUPANT PROTECTION: 4 Stars

The Sorento scored 8.52 out of 16 in the offset crash test. The passenger compartment was badly damaged. Protection from serious leg injury was marginal for the driver and a passenger. Passenger chest protection was also marginal.

The vehicle scored 16 out of 16 in the side impact crash test.



Offset crash test at 64km/h

FRONTAL OFFSET CRASH TEST (v4.0)

Body region scores out of 4 points each: Head/neck 3 pts, chest 1.9 pts, upper legs 2 pts, lower legs 1.62 pts.

The passenger compartment was badly damaged in the offset crash test but not quite enough to lose points. The brake pedal moved rearwards by 113 mm and upwards 19 mm. The steering wheel hub moved 3 mm rearward, 28 mm upward and 3 mm sideways. The front ("A") pillar moved 44 mm rearwards. All doors remained closed during the crash. After the crash the driver's door could be opened with high manual effort.

The airbag cushioned the head of the driver but it bottomed out. Steering column and dash components were a potential source of injury for the driver and passenger knees. The passenger's head was cushioned by the airbag.


SIDE IMPACT CRASH TEST (v4.0)

Body region scores out of 4 points each: Head 4 pts, chest 4 pts, abdomen 4 pts, pelvis 4 pts.

The side impact test simulates a small car striking the driver's door of the vehicle under test. It is based on a regulation test but the regulation does not apply to vehicles with a high seat height like the Sorento. Experience shows that such vehicles can be expected to perform well in this test and the Sorento scored full marks.

PEDESTRIAN PROTECTION: 1 Star

Only part of the bonnet provided good protection for an adult head impact. All other test points were poor.

PEDESTRIAN PROTECTION		Child head impacts	Zero
 Rated ★★★★★ Tested by Euro NCAP v4.0	Adult head impacts	3.170	
	Upper leg impacts	Zero	
	Lower leg impacts	Zero	
	Total (out of 36)	3.170	

No picture of pedestrian protection available

September 2008

PO Box 4041

Manuka ACT 2603

sorento07.doc

Issued 26/9/2008



ANCAP

Crash testing for safety

AUSTRALASIAN
NEW CAR ASSESSMENT
PROGRAM

TECHNICAL DATA - KIA SORENTO - 2007 on

INJURY MEASUREMENTS

Body region	Offset Crash Test at 64km/h (v4.0)		Side Impact Crash Test at 50km/h (v4.0)
	Driver	Passenger	Driver
Head HIC	449	341	21
Acceleration (g for 3ms)	57.1	44.3	23.2
Neck - Shear (ken)	0.46	0.77	-
Tension (kN)	1.64	1.11	-
Extension (Nm)	15.2	19.8	-
Chest Accln (g for 3ms)	-	-	-
Compression (mm)	28.81	36.69	14.68
Viscous criterion (m/s)	0.12	0.14	0.06
Abdomen - Force (kN)	-	-	0.590
Pelvis - Force (kN)	-	-	0.470
Upper legs Force (kN)			
Left	2.59	3.43	
Right	2.49	1.12	
Knee displ (mm)			
Left	0.03	5.21	
Right	0.40	5.98	
Lower legs Force (kN)			
Left	1.96	1.59	
Right	5.57	2.22	
Index (Upper/Low)			
Left	0.55 /0.41	0.33 /0.30	
Right	0.93 /0.35	0.35/0.18	

Bonus points (maximum 5)

Pole Test Not eligible due to a lack of head-protecting side airbags

Seat belt reminders: None

Modifiers - deductions from offset test scores

Head Airbag bottomed out 1 pt deduction
 Chest No deduction
 Upper leg Variable & conc. loading 2 pt deduction Left & Right
 for driver and passenger
 Lower leg No deduction
 Foot score Footwell rupture & pedal rear Score 2.46 points

Modifiers - deductions from side impact test scores

Chest No deduction

Safety features

These specifications are subject to change. Please check with manufacturer for the latest specifications.



Driver airbag	S	Antilock (ABS) brakes / Electronic brake distribution / Brake Assist	S/S/X
Passenger front airbag	S	Electronic stability control (ESC, VSC, DSC, ESP, VSA)	V#
Side airbags, front seats - chest protection	V	3 point centre rear seat belt	S
Side airbags, front seats - head protection	V	Active head restraints - front seats	S
Side airbags, rear seats - head protection	V	Intelligent seat belt reminder - driver	X
Driver knee airbag	X	Intelligent seat belt reminder - front passenger	X
Seat belt pretensioners (Front/Rear outboard)	S/X	Rear seat belt status indicator	X

Key:

S = standard on all variants

O = optional on base variant. May be standard on higher variants

V= not available on base variant but standard or optional on higher variants

X = not available on any variant

ESC required by ANCAP for 5 star rating from 2008