

Crash Test Results

New Car Safety

KIA RIO (LHD)

2007 on

Dual front airbags



Offset crash test at 64km/h



ANCAP
Rated ★★★★★

Occupant Protection

Occupant Protection Score 23.41 out of 37

Variant: LX 5 dr hatch Eng: 1.4 litre

Kerb weight: 1150 kg Category: SMALL CAR

Vehicles built: 05 & 07 Tests by Euro NCAP & ANCAP

Important note: The *left-hand-drive* European model was offset-tested by Euro NCAP. Australasian specifications may vary and therefore models sold in Australasia might provide different levels of protection to those described on this page.

Model History and Safety Features

The tested model of Kia Rio was introduced in Australia during 2005.

Dual front airbags are standard equipment. Side airbags and head-protecting side curtains are standard on some variants but are not available on others. Antilock brakes (ABS) with electronic brake distribution (EBD) are also standard on some Australian variants and all New Zealand variants. Electronic stability control (ESC) is not available. An intelligent seat belt reminder is fitted to the driver seat.

The front seat belt buckles are mounted on the seats and the upper anchorages are adjustable. These features improve the fit of the seat belt. Pretensioners are fitted to the front seat belts to reduce slack in the event of a crash. A three point seat belt is fitted to the centre rear seat. This provides better protection than a two point (lap) seat belt.

OCCUPANT PROTECTION: 4 Stars

The Rio scored 11.02 out of 16 in the offset crash test. The passenger compartment held its shape well. Protection from serious chest and leg injury was marginal for the driver. The vehicle scored 11.39 out of 16 in the side impact crash test. Chest protection was weak for the driver.

FRONTAL OFFSET CRASH TEST (v4.1)

Body region scores out of 4 points each: Head/neck 4 pts, chest 2.04 pts, upper legs 2 pts, lower legs 2.98 pts.

The passenger compartment held its shape well in the offset crash test. The brake pedal moved rearwards by 68 mm. The throttle pedal moved upwards 34 mm. The steering wheel hub moved 4mm rearward, 53mm upward and 1mm sideways. The front ("A") pillar moved 23 mm rearwards. All doors remained closed during the crash.


The airbag cushioned the head of the driver and contact was stable. Steering column and dash components were a potential source of injury for the driver and passenger knees. The passenger's head was cushioned by the airbag.

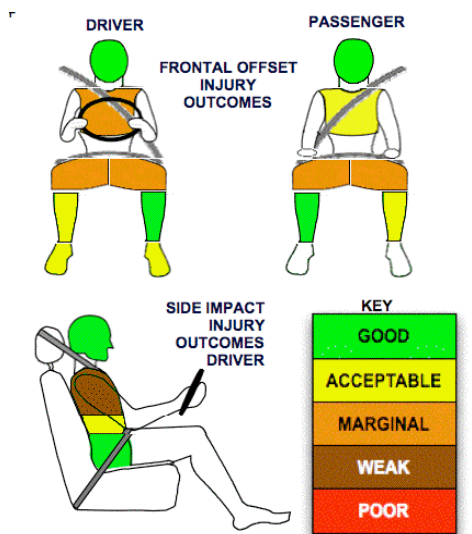
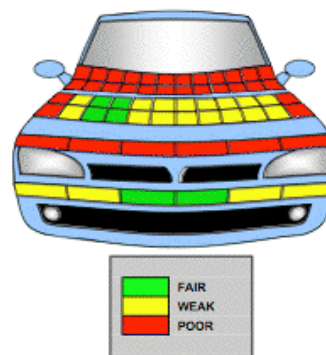
SIDE IMPACT CRASH TEST (v4.1)

Body region scores out of 4 points each: Head 4 pts, chest 0.14 pts, abdomen 3.25 pts, pelvis 4 pts.

This rating is based on an ANCAP test of a Rio without the optional side and curtain airbags. The vehicle was therefore not eligible for an optional pole impact test. The Rio with side and curtain airbags earned 4 stars (see separate ANCAP rating).

PEDESTRIAN PROTECTION RATING (v4.1)

PEDESTRIAN PROTECTION		
 ANCAP Rated ★★★★★ Tested by Euro NCAP	Child head impacts	8.63
	Adult head impacts	Zero
	Upper leg impacts	Zero
	Lower leg impacts	4.33
	Total (out of 36)	12.96



January 2008

PO Box 1555
 Canberra ACT
 Australia 2601
 rio07x.doc
 Issued 14/1/08



ANCAP

Crash testing for safety

AUSTRALASIAN
 NEW CAR ASSESSMENT
 PROGRAM

www.ancap.com.au

TECHNICAL DATA - KIA RIO (LHD) - 2007 on

INJURY MEASUREMENTS

Body region	Offset Crash Test at 64km/h (v4.1)		Side Impact Crash Test at 50km/h (v4.1)
	Driver	Passenger	Driver
Head HIC	357	309	167
Acceleration (g for 3ms)	46.5	40.8	51.4
Neck - Shear (kN)	0.29	0.65	-
Tension (kN)	1.23	1.20	-
Extension (Nm)	9.5	14.2	-
Chest Accln (g for 3ms)	-	-	-
Compression (mm)	35.71	30.81	33.3
Viscous criterion (m/s)	0.01	0.11	0.47
Abdomen - Force (kN)	-	-	1.28
Pelvis - Force (kN)	-	-	2.99
Upper legs Force (kN)			
Left	2.50	1.82	
Right	2.54	0.43	
Knee displ (mm)			
Left	1.86	3.94	
Right	0.00	0.28	
Lower legs Force (kN)			
Left	1.45	2.45	
Right	3.00	1.98	
Index (Upper/Low)			
Left	0.23 /0.18	0.22 /0.26	
Right	0.63 /0.37	0.25/0.19	

Bonus points (maximum 5)

Pole Test: This variant not eligible

Seat belt reminders: 1 (see table below for details)

Modifiers - deductions from offset test scores

Head	No deduction
Chest	No deduction
Upper leg Variable & conc. loading for driver and passenger	2 pt deduction Left & Right
Lower leg	No deduction
Foot score Footwell rupture	Score 3 points

Modifiers - deductions from side impact test scores

Chest Backplate & T12 loads	1.6 pt deduction
-----------------------------	------------------

Safety features

These specifications are subject to change. Please check with manufacturer for the latest specifications.



Driver airbag	S	Antilock (ABS) brakes / Electronic brake distribution	V/V (NZ S/S)
Passenger front airbag	S	Electronic stability control (ESC, VSC, DSC, ESP, VSA)	X
Side airbags, front seats - chest protection	V	3 point centre rear seat belt	S
Side airbags, front seats - head protection	V	Active head restraints - front seats	S
Side airbags, rear seats - head protection	V	Intelligent seat belt reminder - driver	S
Driver knee airbag	X	Intelligent seat belt reminder - front passenger	X
Front seat belt pretensioners	S	Rear seat belt status indicator	X

Key:

S = standard on all variants

O = optional on base variant. May be standard on higher variants

V= not available on base variant but standard or optional on higher variants

X = not available on any variant