

Crash Test Results

New Car Safety

KIA RIO (LHD)

2007 on

Front+side+head airbags*



Offset crash test at 64km/h

FRONTAL OFFSET CRASH TEST (v4.1)

Body region scores out of 4 points each: Head/neck 4 pts, chest 2.04 pts, upper legs 2 pts, lower legs 2.98 pts.

The passenger compartment held its shape well in the offset crash test. The brake pedal moved rearwards by 68 mm. The throttle pedal moved upwards 34 mm. The steering wheel hub moved 4mm rearward, 53mm upward and 1mm sideways. The front ("A") pillar moved 23 mm rearwards. All doors remained closed during the crash.

The airbag cushioned the head of the driver and contact was stable. Steering column and dash components were a potential source of injury for the driver and passenger knees. The passenger's head was cushioned by the airbag.

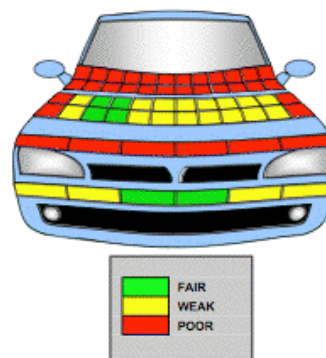
SIDE IMPACT CRASH TEST (v4.1)

Body region scores out of 4 points each: Head 4 pts, chest 3.28 pts, abdomen 3.2 pts, pelvis 4 pts.

The vehicle was eligible for an optional pole impact test, since it had head-protecting side airbags and scored four points for the head in the side impact test. The manufacturer decided to go ahead with the pole test and the vehicle earned a further two points.

PEDESTRIAN PROTECTION RATING (v4.1)

PEDESTRIAN PROTECTION		
	Child head impacts	8.63
	Adult head impacts	Zero
	Upper leg impacts	Zero
	Lower leg impacts	4.33
	Total (out of 36)	12.96



Occupant Protection
Rated ★ ★ ★ ★

Occupant Protection Score 28.50 out of 37

* Safety equipment, as tested, not standard on all variants

Variant: 5 dr hatch

Eng: 1.4 litre

Kerb weight: 1150 kg

Category: SMALL CAR

Vehicles built: 2005

Tested by Euro NCAP

Important note: The *left-hand-drive* European model was tested by Euro NCAP. Australasian specifications may vary and therefore models sold in Australasia might provide different levels of protection to those described on this page.

Model History and Safety Features

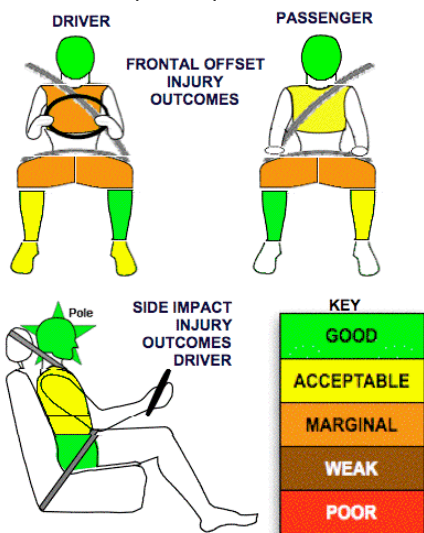
The tested model of Kia Rio was introduced in Australia during 2005.

Dual front airbags are standard equipment. Side airbags and head-protecting side curtains, as fitted to the tested vehicle, are standard on some variants but are not available on others. Antilock brakes (ABS) with electronic brake distribution (EBD) are also standard on some Australian variants and all New Zealand variants. Electronic stability control (ESC) is not available. An intelligent seat belt reminder is fitted to the driver seat.

The front seat belt buckles are mounted on the seats and the upper anchorages are adjustable. These features improve the fit of the seat belt. Pretensioners are fitted to the front seat belts to reduce slack in the event of a crash. A three point seat belt is fitted to the centre rear seat. This provides better protection than a two point (lap) seat belt.

OCCUPANT PROTECTION: 4 Stars

The Rio scored 11.02 out of 16 in the offset crash test. The passenger compartment held its shape well. Protection from serious chest and leg injury was marginal for the driver. The vehicle scored 14.48 out of 16 in the side impact crash test. There was a slight risk of serious chest and abdomen injury for the driver. A further two points were scored in the optional pole test.



November 2007

PO Box 1555
Canberra ACT
Australia 2601
rio07.doc
Issued 9/11/07



TECHNICAL DATA - KIA RIO WITH SIDE CURTAINS (LHD) - 2007 on

INJURY MEASUREMENTS

Body region	Offset Crash Test at 64km/h (v4.1)		Side Impact Crash Test at 50km/h (v4.1)
	Driver	Passenger	Driver
Head HIC	357	309	36
Acceleration (g for 3ms)	46.5	40.8	20.7
Neck - Shear (kN)	0.29	0.65	-
Tension (kN)	1.23	1.20	-
Extension (Nm)	9.5	14.2	-
Chest Accln (g for 3ms)	-	-	-
Compression (mm)	35.71	30.81	25.53
Viscous criterion (m/s)	0.01	0.11	0.23
Abdomen - Force (kN)	-	-	1.300
Pelvis - Force (kN)	-	-	2.320
Upper legs Force (kN)			
Left	2.50	1.82	
Right	2.54	0.43	
Knee displ (mm)			
Left	1.86	3.94	
Right	0.00	0.28	
Lower legs Force (kN)			
Left	1.45	2.45	
Right	3.00	1.98	
Index (Upper/Low)			
Left	0.23 /0.18	0.22 /0.26	
Right	0.63 /0.37	0.25/0.19	

Bonus points (maximum 5)

Pole Test: 2 pts

Seat belt reminders: 1 (see table below for details)

Modifiers - deductions from offset test scores

Head	No deduction
Chest	No deduction
Upper leg Variable & conc. loading for driver and passenger	2 pt deduction Left & Right
Lower leg	No deduction
Foot score Footwell ruptue	Score 3 points

Modifiers - deductions from side impact test scores

Chest Backplate & T12 loads	0.01 pt deduction
-----------------------------	-------------------

Safety features

These specifications are subject to change. Please check with manufacturer for the latest specifications.



Driver airbag	S	Antilock (ABS) brakes / Electronic brake distribution	V/V (NZ S/S)
Passenger front airbag	S	Electronic stability control (ESC, VSC, DSC, ESP, VSA)	X
Side airbags, front seats - chest protection	V √	3 point centre rear seat belt	S
Side airbags, front seats - head protection	V √	Active head restraints - front seats	S
Side airbags, rear seats - head protection	V √	Intelligent seat belt reminder - driver	S
Driver knee airbag	X	Intelligent seat belt reminder - front passenger	X
Front seat belt pretensioners	S	Rear seat belt status indicator	X

Key: √ = Fitted to vehicle that was crash tested (where not standard)

S = standard on all variants

O = optional on base variant. May be standard on higher variants

V= not available on base variant but standard or optional on higher variants

X = not available on any variant