

Crash Test Results

New Car Safety

KIA PICANTO

From 2011 Front+side+head airbags



Offset crash test at 64km/h (Euro NCAP)



ANCAP

Safety ★★★★★

Safety Rating

Occupant Protection Score 34.26 out of 37

Tested variant: LX LHD Eng: 1.0 3 cyl
 Kerb mass 940 kg Category: CAR - LIGHT
 Vehicles built: 2011 Tested by Euro NCAP

Important note: The 1.0 litre 3 cylinder left-hand-drive European model was tested by Euro NCAP. Kia provided information to ANCAP which showed that RHD variants with the 1.25 litre 4 cylinder engine have comparable occupant protection.

Model History and Safety Features

The tested model of Kia Picanto was introduced in New Zealand during 2011. It was not in sale in Australia at the time of this assessment. This ANCAP rating applies to all New Zealand variants.

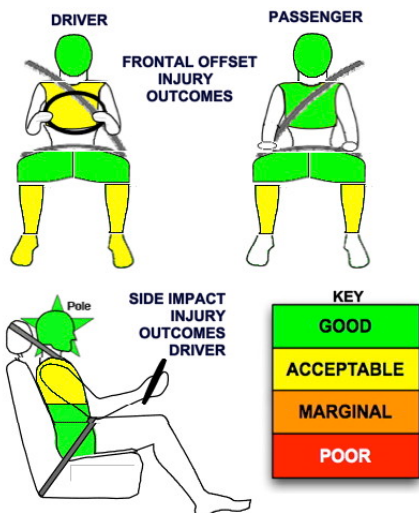
Dual front airbags, side airbags and head-protecting side curtains are standard equipment. Antilock brakes (ABS), electronic brakeforce distribution (EBD) and electronic stability control (ESC) are also standard. A driver knee airbag is standard on the EX variant but is not necessary for this 5-star ANCAP rating. Intelligent seat belt reminders are fitted all seats.

Pretensioners are fitted to the front seat belts to reduce slack in the event of a crash.

OCCUPANT PROTECTION: 5 Stars

The Picanto scored 15.12 out of 16 in the offset crash test. The passenger compartment held its shape well. There was a slight risk serious chest and leg injury for the driver.

The vehicle scored 14.14 out of 16 in the side impact crash test. There was a slight risk of serious chest injury for the driver. A further two points were scored in the pole test.



FRONTAL OFFSET CRASH TEST

Body region scores out of 4 points each: Head/neck 4 pts, chest 3.98 pts, upper legs 4 pts, lower legs 3.14 pts.

The passenger compartment held its shape well in the offset crash test. The clutch pedal moved rearwards by 104 mm and upwards 54 mm. The steering wheel hub moved 46mm forward, 6 mm upward and 9 mm sideways. All doors remained closed during the crash. After the crash the driver's door could be opened with high manual effort.

The airbag cushioned the head of the driver and contact was stable. There were no knee hazards. The passenger's head was cushioned by the airbag.

SIDE IMPACT CRASH TEST

Body region scores out of 4 points each: Head 4 pts, chest 3.14 pts, abdomen 4 pts, pelvis 4 pts.

The rear door on the driver side opened during the test.

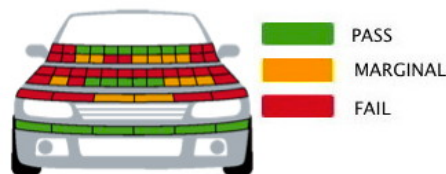
The vehicle was eligible for a pole impact test, since it had head-protecting side airbags. The vehicle earned the maximum two points in this test.

PEDESTRIAN PROTECTION: Marginal

The bonnet was rated as poor or marginal in most areas likely to be struck by a pedestrian's head. Similarly, the front edge of the bonnet did not provide good protection for pedestrians' legs. Only the bumper scored maximum points, offering good protection for pedestrians in all areas tested.

PEDESTRIAN PROTECTION		
MARGINAL	Child head impacts	3.96
	Adult head impacts	5.25
	Upper leg impacts	1.54
	Lower leg impacts	6
	Total (out of 36)	16.76

Tested by Euro NCAP v5.3



OCTOBER 2012

PO Box 4041
 Manuka ACT 2603
 picanto11.doc Rated: 2011
 Issued 31/10/2012



ANCAP

Crash testing for safety

AUSTRALASIAN
 NEW CAR ASSESSMENT
 PROGRAM

www.ancap.com.au

TECHNICAL DATA - KIA PICANTO - From 2011

INJURY MEASUREMENTS

Body region	Offset Crash Test at 64km/h (v5.2)		Side Impact Crash Test at 50km/h (v5.2)
	Driver	Passenger	Driver
Head HIC	352	263	35
Acceleration (g for 3ms)	47.8	42.2	24.4
Neck - Shear (kN)	0.61	0.37	-
Tension (kN)	1.18	0.98	-
Extension (Nm)	30.0	14.4	-
Chest Accln (g for 3ms)	-	-	-
Compression (mm)	22.15	19.52	26.31
Viscous criterion (m/s)	0.08	0.09	0.18
Abdomen - Force (kN)	-	-	0.980
Pelvis - Force (kN)	-	-	1.720
Upper legs Force (kN)			
Left	0.15	1.40	
Right	0.20	0.20	
Knee displ (mm)			
Left	0.20	0.90	
Right	0.00	0.00	
Lower legs Force (kN)			
Left	2.56	2.64	
Right	3.29	2.68	
Index (Upper/Low)			
Left	0.43 /0.29	0.29 /0.26	
Right	0.48 /0.43	0.47/0.16	

Bonus points (maximum 5)

Pole Test: 2 pts

Seat belt reminders: 3 (see table below for details)

Modifiers - deductions from offset test scores

Head	No deduction
Chest	No deduction
Upper leg	No deduction
Lower leg	No deduction
Foot score	Score 4 points

Modifiers - deductions from side impact test scores

Chest	No deduction
Rear door opened	1 pt deduction

Safety features

These specifications are subject to change. Please check with manufacturer for the latest specifications.



Credit AA NZ

Feature	Availability	Description	Rating
Driver airbag	S	Antilock (ABS) brakes / Electronic brake distribution / Brake Assist	S/S/S
Passenger front airbag	S	Electronic stability control (ESC, VSC, DSC, ESP, VSA)	S#
Side airbags, front seats - chest protection	S	3 point seat belt for all forward-facing seats	S
Side airbags, front seats - head protection	S	Whiplash protection (RCAR protocol)	Not rated*
Side airbags, rear seats - head protection	S	Intelligent seat belt reminder - driver	S
Driver knee airbag	V	Intelligent seat belt reminder - front passenger	S
Seat belt pretensioners (Front/Rear outboard)	S/X	Intelligent seat belt reminder - rear seats	S

Key: * Euro NCAP rated the whiplash protection "marginal". This model has not been assessed to the RCAR protocol.

S = standard on all variants

O = optional on base variant. May be standard on higher variants

V= not available on base variant but standard or optional on higher variants

X = not available on any variant

ESC required by ANCAP for 5 star rating from 2008



ANCAP

Crash testing for safety

AUSTRALASIAN
NEW CAR ASSESSMENT
PROGRAM

www.ancap.com.au