

Crash Test Results

New Car Safety

KIA CERATO (LHD)

2007 on

Dual front airbags



Offset crash test at 64km/h

FRONTAL OFFSET CRASH TEST (v4.1)

Body region scores out of 4 points each: Head/neck 4 pts, chest 2.59 pts, upper legs 2 pts, lower legs 1.42 pts.

The passenger compartment held its shape reasonable well in the offset crash test. The clutch pedal moved rearwards by 132 mm and upwards 56 mm. The steering wheel hub moved rearwards 12 mm and sideways 26 mm. The front ("A") pillar moved 42 mm rearwards. All doors remained closed during the crash. After the crash high manual effort was required to open the driver's door.


The airbag cushioned the head of the driver and contact was stable. Steering column and dash components were a potential source of injury for the driver and passenger knees. The passenger's head was cushioned by the airbag.

SIDE IMPACT CRASH TEST (v4.1)

Body region scores out of 4 points each: Head 4 pts, chest zero pts, abdomen 0.88 pts, pelvis 4 pts.

This rating is based on an ANCAP test of a Cerato without the optional side and curtain airbags. The vehicle was therefore not eligible for an optional pole impact test. ANCAP has been advised that the Euro NCAP side impact test of a curtain-equipped Cerato is not applicable to the Australian model.

PEDESTRIAN PROTECTION RATING (v4.1)

PEDESTRIAN PROTECTION			
 ANCAP Rated ★ ★ ★ ★ ★ Tested by Euro NCAP	Child head impacts	8	
	Adult head impacts	Zero	
	Upper leg impacts	Zero	
	Lower leg impacts	Zero	
	Total (out of 36)	8	


ANCAP Occupant Protection
 Rated ★ ★ ★ ★ ★

Occupant Protection Score 19.90 out of 37

Variant: 5 dr hatch

Eng: 1.6 litre

Kerb weight: 1280 kg

Category: SMALL CAR

Vehicles built: 2005 & 07 Tests by Euro NCAP & ANCAP

Important note: The *left-hand-drive* European model was offset-tested by Euro NCAP. Australasian specifications may vary and therefore models sold in Australasia might provide different levels of protection to those described on this page.

Model History and Safety Features

The tested model of Kia Cerato was introduced in Australia during 2006. Side airbags and side curtains became available in 2007.

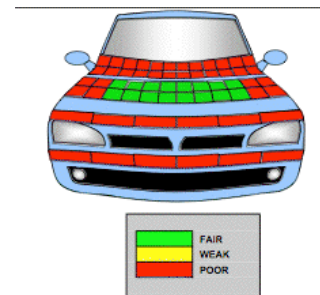
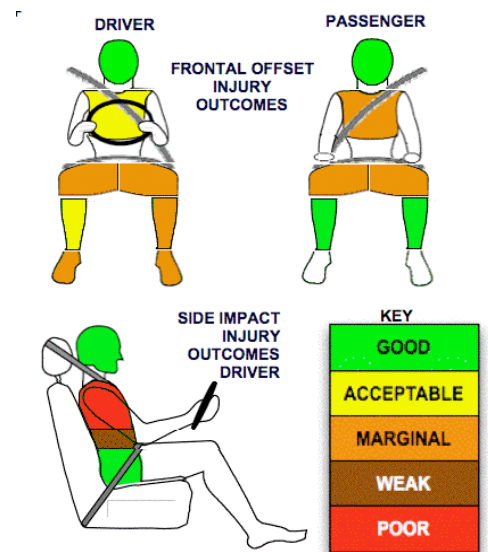
Dual front airbags are standard equipment. Side airbags, head-protecting side curtains and antilock brakes (ABS), are optional. Electronic stability control is not available. An intelligent seat belt reminder is fitted to the driver seat.

The front seat belt buckles are mounted on the seats and the upper anchorages are adjustable. These features improve the fit of the seat belt. Pre-tensioners are fitted to the front seat belts to reduce slack in the event of a crash. A three point seat belt is fitted to the centre rear seat. This provides better protection than a two point (lap) seat belt.

OCCUPANT PROTECTION: 3 Stars

The Cerato scored 10.02 out of 16 in the offset crash test. The passenger compartment held its shape reasonably well. Protection from serious leg injury was marginal for the driver. Chest protection was marginal for the passenger.

The vehicle scored 8.88 out of 16 in the side impact crash test. Chest protection was poor and abdomen protection was weak for the driver.



January 2008

PO Box 1555
 Canberra ACT
 Australia 2601
 cerato07.doc
 Issued 14/1/2008


ANCAP
 Crash testing for safety
 AUSTRALASIAN
 NEW CAR ASSESSMENT
 PROGRAM

TECHNICAL DATA - KIA CERATO (LHD) - 2007 on

INJURY MEASUREMENTS

Body region	Offset Crash Test at 64km/h (v4.1)		Side Impact Crash Test at 50km/h (v4.1)
	Driver	Passenger	Driver
Head HIC	326	249	93
Acceleration (g for 3ms)	44.7	36.1	39.7
Neck - Shear (kN)	0.49	0.61	-
Tension (kN)	1.07	1.16	-
Extension (Nm)	6.4	11.2	-
Chest Accln (g for 3ms)	-	-	-
Compression (mm)	29.07	31.84	30.6
Viscous criterion (m/s)	0.09	0.10	0.66
Abdomen - Force (kN)	-	-	2.170
Pelvis - Force (kN)	-	-	2.220
Upper legs Force (kN)			
Left	0.78	1.64	
Right	2.11	0.16	
Knee displ (mm)			
Left	0.40	0.00	
Right	0.00	0.00	
Lower legs Force (kN)			
Left	1.67	1.52	
Right	2.57	1.34	
Index (Upper/Low)			
Left	0.33 /0.98	0.25 /0.21	
Right	0.51 /0.45	0.33/0.31	

Bonus points (maximum 5)

Pole Test: This variant not eligible

Seat belt reminders: 1 (see table below for details)

Modifiers - deductions from offset test scores

Head	No deduction
Chest	No deduction
Upper leg Variable & conc. loading for driver & passenger	2 pt deduction Left & Right
Lower leg	No deduction
Foot score Clutch displacement & blocked pedal	Score 2.15 points

Modifiers - deductions from side impact test scores

Chest Backplate & T12 loads	2 pt deduction
-----------------------------	----------------

Safety features

These specifications are subject to change. Please check with manufacturer for the latest specifications.



Driver airbag	S	Antilock (ABS) brakes / Electronic brake distribution	O/O (NZ S/S)
Passenger front airbag	S	Electronic stability control (ESC, VSC, DSC, ESP, VSA)	X
Side airbags, front seats - chest protection	O	3 point centre rear seat belt	S
Side airbags, front seats - head protection	O	Active head restraints - front seats	O
Side airbags, rear seats - head protection	O	Intelligent seat belt reminder - driver	S
Driver knee airbag	X	Intelligent seat belt reminder - front passenger	X
Front seat belt pretensioners	S	Rear seat belt status indicator	X

Key:

S = standard on all variants

O = optional on base variant. May be standard on higher variants

V= not available on base variant but standard or optional on higher variants

X = not available on any variant