

ANCAP Safety Rating JEEP PATRIOT (From 2011)



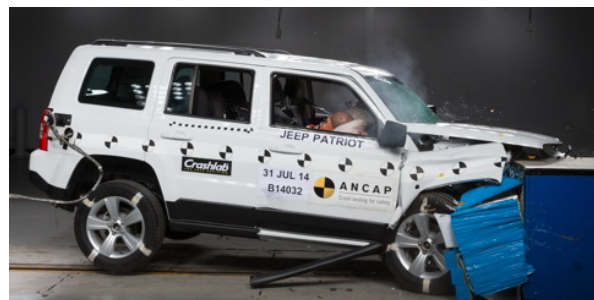
ANCAP

Safety ★★★★★



Test Vehicle(s).

Test Variant:	Jeep Patriot Sport 4x2
Kerb Mass:	1490 kg
Built:	2014
Engine:	2.0 petrol
Category:	MEDIUM SUV
Variant Applicability*:	Only applies to 4x2 variants



Frontal offset test at 64 km/h

Airbags	ESC	Frontal Offset	Side Impact	Pole	Whiplash	Pedestrian	Seat Belt Reminders	Overall Score	ANCAP Safety Rating
Frontal + Side + Head	Standard	13.79 (out of 16)	15.94 (out of 16)	2.000 (out of 2)	GOOD	NOT TESTED	1 (out of 3)	32.73 (out of 37)	★★★★★

The tested model of Jeep Patriot was introduced in Australia and New Zealand in 2011. This ANCAP safety rating applies to 4x2 variants. 4x4 variants are unrated.

Dual frontal, side chest and side head airbags (curtains) are standard. Antilock brakes (ABS), electronic brake distribution (EBD) and electronic stability control (ESC) are also standard. An advanced seat belt reminder is fitted to the driver seat.

In the offset crash test driver chest and leg protection was acceptable. Passenger chest and leg protection was also acceptable. There was a slight risk of serious chest injury in the side impact crash test. Head protection in the side pole test was good.

OCCUPANT PROTECTION

Frontal Offset Test.

Each body region is scored out of 4 points

Head / neck:	4.00 points
Chest:	3.03 points
Upper legs:	4.00 points
Lower legs:	2.76 points

The passenger compartment held its shape well in the offset test. Pedal and steering wheel displacements were well controlled. Driver and passenger contact with the airbags was stable. All doors remained closed during the crash. After the crash all doors could be opened with normal effort.

Side Impact Test.

Each body region is scored out of 4 points

Head:	4.00 points
Chest:	3.94 points
Abdomen:	4.00 points
Pelvis:	4.00 points

In the side impact test driver chest protection was acceptable. Protection for the head, abdomen and pelvis was good.

Pole Test.

Scored out of 2 points

The vehicle was eligible for a side pole test because it has side curtain airbags. The vehicle scored the maximum 2 points for head protection in this test.

Whiplash Protection Test.

Whiplash protection is assessed to the RCAR Protocol

Geometric test:	Good
Dynamic test:	Good
Overall whiplash rating:	Good

Injury Outcomes.

Frontal Offset Driver



Passenger



Side Impact & Pole Driver



Whiplash



ANCAP Safety Rating JEEP PATRIOT (From 2011)



ANCAP

Safety ★★★★★



PEDESTRIAN PROTECTION

Pedestrian Test.

Not tested



Jeep Patriot

SAFETY FEATURES

These specifications are subject to change. Please check with manufacturer for the latest specifications. For a description of these safety features and safety rating requirements see the ANCAP Rating Road Map.

Safety Assist Technology (SAT)	Availability
Front airbag - driver	S
Front airbag - passenger	S
Side airbags (chest protection) - front seats	S
Side airbags (head protection) - front seats	S
Side airbags (head protection) - 2nd row seats	S
Knee airbag - driver	X
Three-point seat belts for all forward facing seats	S
Seat belt pretensioners (front / rear outboard)	S / X
Intelligent seat belt reminder - driver	S
Intelligent seat belt reminder - front passenger	X
Intelligent seat belt reminder - 2nd row seats	X
Head restraints for all seats	S
Antilock brakes (ABS)	S
Electronic brake distribution (EBD)	S
Emergency brake assist (EBA)	S
Electronic stability control (ESC)	S
Adaptive cruise control (ACC)	X
Autonomous emergency braking (AEB)	X
Lane support system	X
Hill launch assist	S
Roll stability system	S
Tyre pressure monitoring	S

- S = Standard on all variants.
- O = Optional on base variant. May be standard on higher variants.
- V = Not available on base variant but standard or optional on higher variants.
- X = Not available on any variant.
- E = Available in Europe but not available on any Australasian variant.



INJURY MEASUREMENTS

Body Region	Frontal offset test at 64 km/h (v5.1)		Side impact test at 50 km/h (v5.1)
	Driver	Passenger	Driver
Head			
HIC	309.00	374.00	32.00
Acceleration (g for 3ms)	40.80	53.00	19.20
Neck			
Shear (kN)	0.57	0.54	-
Tension (kN)	1.39	0.54	-
Extension (Nm)	13.00	12.70	-
Chest			
Acceleration (g for 3ms)	-	-	-
Compression (mm)	28.76	23.00	22.30
Viscous criterion (m/s)	0.16	0.08	0.14
Abdomen			
Force (kN)	-	-	0.12
Pelvis			
Force (kN)	-	-	1.01
Upper legs			
Femur force left (kN)	3.50	2.00	
Femur force right (kN)	1.46	3.29	
Knee displacement left (mm)	0.18	0.03	
Knee displacement right (mm)	0.13	0.20	
Lower legs			
Force left (kN)	2.87	2.44	
Force right (kN)	1.59	2.69	
Index (upper / lower) left	0.68 / 0.47	0.52 / 0.21	
Index (upper / lower) right	0.45 / 0.58	0.55 / 0.19	

INTRUSION MEASUREMENTS

Steering Column

Forwards:	73mm
Downwards:	4mm
Sideways:	3mm

Pedals

Brake (rearwards):	77mm
Clutch (upwards):	43mm

A-Pillar (rearwards):	26mm
-----------------------	------

SCORE DEDUCTIONS

Deductions from frontal offset test scores

No deductions for offset test

Note: Steering column and pedal movements are measured relative to the driver's seat.

Deductions from side impact test score

No deductions for side impact test.

Deductions from pole test score

No deductions for pole test.

* For information about the application of ANCAP ratings to model variants see the ANCAP Variant Policy. In brief, ratings do not automatically extend to variants that have different body styles, engine configurations, driven wheels or occupant restraint systems (e.g. fewer airbags). In these cases ANCAP considers technical evidence submitted by manufacturers before deciding on extending a rating to additional variants of a model.

^ Refer ANCAP Rating Road Map (www.ancap.com.au/media).

DOCUMENT REF: PATRIOT11
 CREATED / REVISED: 01/09/2014

