

Crash Test Results

New Car Safety

JEEP COMPASS

From 2012 Front+side+head airbags*



Offset crash test at 64km/h



ANCAP Occupant Protection
Rated ★★★★★

* Safety equipment, as tested, not standard on all variants

Occupant Protection Score 29.21 out of 37

Tested variant: Limited Eng: 2.2 diesel

Kerb mass 1670 kg Category: SUV - MEDIUM

Vehicles built: 2011 Tested by Euro NCAP

Important note: The *diesel left-hand-drive* European model was tested by Euro NCAP. Australasian specifications may vary and therefore models sold in Australasia might provide different levels of protection to those described on this page. ANCAP was provided with technical information which showed that the 4x4 2.4 litre petrol variant can be expected to have comparable crashworthiness to the tested diesel variant.

Model History and Safety Features

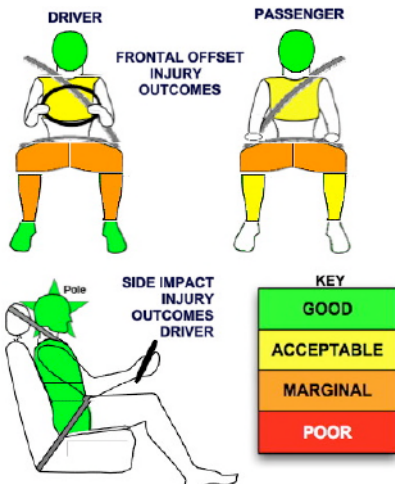
The tested model of Jeep Compass was introduced in Australia during 2012. This rating applies to 4x4 variants with a 2.4 litre petrol or 2.2 litre diesel engine and six airbags (see below).

Dual front airbags and head-protecting side curtains are standard equipment. Antilock brakes and electronic stability control (ESC) are also standard. The vehicle tested by Euro NCAP has side thorax airbags for the front seats. This scoring applies to Compass variants with this feature. Without these airbags it can still be expected to achieve a 4 star rating.

OCCUPANT PROTECTION: 4 Stars

The JEEP COMPASS scored 11.21 out of 16 in the offset crash test. The passenger compartment held its shape well. Protection from serious leg injury was marginal for the driver and passenger.

The vehicle scored 16 out of 16 in the side impact crash test and a further two points in the pole test. Poor pedestrian protection limited the Euro NCAP rating to 2 stars but this does not apply to ANCAP ratings in 2012.



FRONTAL OFFSET CRASH TEST

Body region scores out of 4 points each: Head/neck 4 pts, chest 3.12 pts, upper legs 2 pts, lower legs 2.09 pts.

The passenger compartment held its shape well in the offset crash test. The brake pedal moved rearwards by 40 mm and upwards 18 mm. The steering wheel hub moved 46mm forward, 15 mm upward and 5 mm sideways. The front ("A") pillar moved 6 mm rearwards. All doors remained closed during the crash. After the crash all doors could be opened with normal effort.

The airbag cushioned the head of the driver and contact was stable. Dash components were a potential source of injury for the driver and passenger knees. The passenger's head was cushioned by the airbag.

SIDE IMPACT CRASH TEST

Body region scores out of 4 points each: Head 4 pts, chest 4 pts, abdomen 4 pts, pelvis 4 pts.

The vehicle was eligible for a pole impact test, since it had head-protecting side airbags. The vehicle earned the maximum two points for head protection in this test.

PEDESTRIAN PROTECTION: Poor

The bumper scored no points for its protection of pedestrians' legs. The front edge of the bonnet also scored no points. The bonnet provided good protection in some areas where a child's head might strike, but was poor or marginal in others. In those areas where an adult's head would strike, the bonnet was almost entirely poor.

PEDESTRIAN PROTECTION	Child head impacts	7.856
POOR	Adult head impacts	0.500
	Upper leg impacts	0.000
	Lower leg impacts	0.000
	Total (out of 36)	8.356

Tested by Euro NCAP v5.3



APRIL 2012

PO Box 4041

Manuka ACT 2603

compass12.doc

Issued 5/4/2012



ANCAP

Crash testing for safety

AUSTRALASIAN
NEW CAR ASSESSMENT
PROGRAM

TECHNICAL DATA - JEEP COMPASS - From 2012

INJURY MEASUREMENTS

Body region	Offset Crash Test at 64km/h (v5.1)		Side Impact Crash Test at 50km/h (v5.1)
	Driver	Passenger	Driver
Head HIC	265	190	26
Acceleration (g for 3ms)	41.3	35.6	18.0
Neck - Shear (kN)	0.57	0.56	-
Tension (kN)	1.29	0.46	-
Extension (Nm)	7.0	7.8	-
Chest Accln (g for 3ms)	-	-	-
Compression (mm)	28.14	24.04	21.11
Viscous criterion (m/s)	0.11	0.10	0.13
Abdomen - Force (kN)	-	-	0.100
Pelvis - Force (kN)	-	-	0.720
Upper legs Force (kN)			
Left	0.49	3.10	
Right	2.28	1.50	
Knee displ (mm)			
Left	0.60	0.30	
Right	0.00	0.00	
Lower legs Force (kN)			
Left	2.08	2.27	
Right	3.93	2.15	
Index (Upper/Low)			
Left	0.65 /0.83	0.41 /0.42	
Right	0.68 /0.72	0.57/0.24	

Bonus points (maximum 5)

Pole Test: 2 pts (ANCAP only scores head protection in this test)

Seat belt reminders: Zero (Seat belt reminders fitted to driver and passenger seats did not meet Euro NCAP requirements for bonus points)

Modifiers - deductions from offset test scores

Head	No deduction
Chest	No deduction
Upper leg Variable & conc. loading for driver and passenger	2 pt deduction Left & Right
Lower leg	No deduction
Foot score	Score 4 points

Modifiers - deductions from side impact test scores

Chest	No deduction
-------	--------------

Safety features

These specifications are subject to change. Please check with manufacturer for the latest specifications.

Feature	Availability	Additional Info	Rating
Driver airbag	S	Antilock (ABS) brakes / Electronic brake distribution / Brake Assist	S/S/S
Passenger front airbag	S	Electronic stability control (ESC, VSC, DSC, ESP, VSA)	S#
Side airbags, front seats - chest protection	O √	3 point seat belt for all forward-facing seats	S
Side airbags, front seats - head protection	S	Whiplash protection (RCAR protocol)	Pending
Side airbags, rear seats - head protection	S	Intelligent seat belt reminder - driver	X@
Driver knee airbag	X	Intelligent seat belt reminder - front passenger	X@
Seat belt pretensioners (Front/Rear outboard)	S/X	Intelligent seat belt reminder - rear seats	X

Key: √ = Fitted to vehicle that was crash tested @ Fitted device did not meet Euro NCAP requirements

S = standard on all variants

O = optional on base variant. May be standard on higher variants

V= not available on base variant but standard or optional on higher variants

X = not available on any variant

ESC required by ANCAP for 5 star rating from 2008

