

Crash Test Results

New Car Safety

JEEP GRAND CHEROKEE

From 2011 Front+side+head+knee airbags



Offset crash test at 64km/h

FRONTAL OFFSET CRASH TEST

Body region scores out of 4 points each: Head/neck 3 pts, chest 1.88 pts, upper legs 2 pts, lower legs 3.07 pts.

The passenger compartment held its shape well in the offset crash test. The park brake pedal moved rearwards by 29 mm and upwards 5 mm. The steering wheel hub moved 52mm forward, 38mm downward and 5 mm sideways. The front ("A") pillar moved 7 mm rearwards. All doors remained closed during the crash. After the crash all doors could be opened with normal effort. The airbag cushioned the head of the driver but Euro NCAP found that the airbag bottomed out and applied a one point deduction. Despite the driver knee airbag, dash components were found to be a potential source of injury for the driver and passenger knees. Euro NCAP also noted that there was a seat slide mechanism failure. ANCAP applies a one point deduction for these failures.

SIDE IMPACT CRASH TEST

Body region scores out of 4 points each: Head 4 pts, chest 4 pts, abdomen 4 pts, pelvis 4 pts.

The side impact test simulates a small car striking the driver's door of the vehicle under test. Experience shows that high vehicles like the Grand Cherokee can be expected to perform well in this test and it scored full marks. The vehicle was eligible for a pole impact test, since it had head-protecting side airbags. The vehicle earned the maximum two points in this test.

PEDESTRIAN PROTECTION: Marginal

The bumper provided good protection in all areas tested and scored maximum points. However, the front edge of the bonnet was poor in all areas tested. In almost all areas likely to be struck by the head of a child, the bonnet provided poor protection. However, protection provided to an adult's head was mixed with areas of good and poor protection.

PEDESTRIAN PROTECTION	Child head impacts	1.58
MARGINAL	Adult head impacts	8.48
	Upper leg impacts	Zero
	Lower leg impacts	6
	Total (out of 36)	16.06

Tested by Euro NCAP vXX



Occupant Protection Score 29.95 out of 37

Variant: Limited Eng: 3.0 diesel
 Kerb mass 2330 kg Category: SUV - LARGE
 Vehicles built: 2011 Tested by Euro NCAP

Important note: The *diesel left-hand-drive* European model was tested by Euro NCAP. Australasian specifications may vary and therefore models sold in Australasia might provide different levels of protection to those described on this page.

Model History and Safety Features

The tested model of Jeep Grand Cherokee was introduced in Australia and New Zealand during 2011. This ANCAP rating currently only applies to diesel variants of the Grand Cherokee. Further technical information is being sought about other variants.

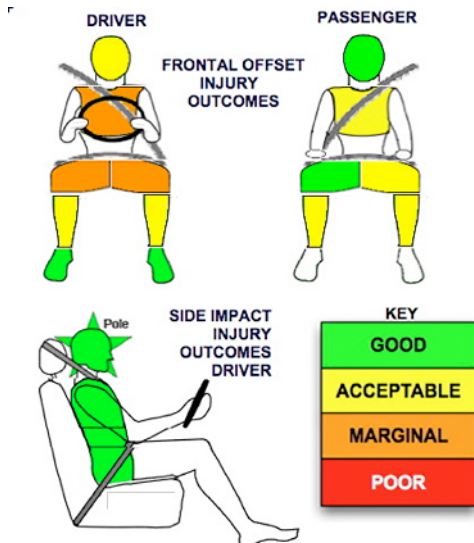
Dual front airbags, side airbags, head-protecting side curtains and driver knee airbag are standard equipment. Antilock brakes (ABS), electronic brakeforce distribution (EBD) and electronic stability control (ESC) are also standard. Intelligent seat belt reminders are fitted to both front seats.

Pretensioners are fitted to the front seat belts to reduce slack in the event of a crash.

OCCUPANT PROTECTION: 4 Stars

The Grand Cherokee scored 9.95 out of 16 in the offset crash test. The passenger compartment held its shape well. Protection from serious chest and leg injury was marginal for the driver.

The vehicle scored 16 out of 16 in the side impact crash test and a further two points in the pole test.



DECEMBER 2011

PO Box 4041
 Manuka ACT 2603
 cherokee11.doc
 Issued 9/12/2011



TECHNICAL DATA - JEEP GRAND CHEROKEE - From 2011

INJURY MEASUREMENTS

Body region	Offset Crash Test at 64km/h (v5.1)		Side Impact Crash Test at 50km/h (v)
	Driver	Passenger	Driver
Head HIC	301	332	10
Acceleration (g for 3ms)	48.4	48.4	12.5
Neck - Shear (kN)	0.61	0.34	-
Tension (kN)	0.67	0.91	-
Extension (Nm)	18.7	20.7	-
Chest Accln (g for 3ms)	-	-	-
Compression (mm)	29.81	22.78	8.21
Viscous criterion (m/s)	0.11	0.07	0.02
Abdomen - Force (kN)	-	-	0.160
Pelvis - Force (kN)	-	-	0.360
Upper legs Force (kN)			
Left	0.23	1.80	
Right	0.68	0.00	
Knee displ (mm)			
Left	0.40	4.70	
Right	0.10	0.00	
Lower legs Force (kN)			
Left	2.01	2.63	
Right	2.59	2.25	
Index (Upper/Low)			
Left	0.37 /0.17	0.50 /0.55	
Right	0.40 /0.61	.44/.3	

Bonus points (maximum 5)

Pole Test: 2 pts

Seat belt reminders: 2 (see table below for details)

Modifiers - deductions from offset test scores

Head	Airbag bottomed out	1 pt deduction
Chest	Seat slide mechanism failure*	1 pt deduction
Upper leg	Variable & conc. loading	2 pt deduction Left & Right
Lower leg		No deduction
Foot score		Score 4 points

* ANCAP modifier not applied by Euro NCAP

Modifiers - deductions from side impact test scores

Chest	No deduction
-------	--------------

Safety features

These specifications are subject to change. Please check with manufacturer for the latest specifications.

Driver airbag	S	Antilock (ABS) brakes / Electronic brake distribution / Brake Assist	S/S/S
Passenger front airbag	S	Electronic stability control (ESC, VSC, DSC, ESP, VSA)	S#
Side airbags, front seats - chest protection	S	3 point seat belt for all forward-facing seats	S
Side airbags, front seats - head protection	S	Whiplash protection (RCAR protocol)	Pending
Side airbags, rear seats - head protection		Intelligent seat belt reminder - driver	S
Driver knee airbag	S	Intelligent seat belt reminder - front passenger	S
Seat belt pretensioners (Front/Rear outboard)	S/X	Intelligent seat belt reminder - rear seats	X

Key:

S = standard on all variants

O = optional on base variant. May be standard on higher variants

V= not available on base variant but standard or optional on higher variants

X = not available on any variant

ESC required by ANCAP for 5 star rating from 2008

