

Crash Test Results

New Car Safety

HYUNDAI VELOSTER

From 2012 Front+side+head airbags



Offset crash test at 64km/h (Euro NCAP)



ANCAP

Rated ★★★★★

Occupant Protection

Occupant Protection Score 35.47 out of 37

Variant: GDI GLS Eng: 1.6
 Kerb mass 1240 kg Category: CAR - SPORTS
 Vehicles built: 2011 Tested by Euro NCAP

Important note: The *left-hand-drive* European model was tested by Euro NCAP. Hyundai provided technical evidence to show that the results apply to the right-hand-drive Australasian model, including the SR Turbo.

Model History and Safety Features

The tested model of the Veloster was introduced in Australia and New Zealand during 2012. This ANCAP rating applies to all variants.

Dual front airbags, side airbags and head-protecting side curtains are standard equipment. Antilock brakes (ABS), electronic brakeforce distribution (EBD) and electronic stability control (ESC) are also standard. Intelligent seat belt reminders are fitted to both front seats.

Pretensioners are fitted to the front seat belts to reduce slack in the event of a crash.

OCCUPANT PROTECTION: 5 Stars

The Veloster scored 15.47 out of 16 in the offset crash test. The passenger compartment held its shape well. There was a slight risk of serious leg injury for the driver and front passenger.

The vehicle scored 16 out of 16 in the side impact crash test and a further two points in the pole test.

FRONTAL OFFSET CRASH TEST

Body region scores out of 4 points each: Head/neck 4 pts, chest 4 pts, upper legs 4 pts, lower legs 3.47 pts.

The passenger compartment held its shape well in the offset crash test. The clutch pedal moved rearwards by 77 mm. The brake pedal moved upwards 26 mm. The steering wheel hub moved 19mm forward, 2 mm upward and 3 mm sideways. The front ("A") pillar moved 10mm forwards. All doors remained closed during the crash. After the crash the driver's door could be opened with normal effort.

The airbag cushioned the head of the driver and contact was stable. There were no knee hazards. The passenger's head was cushioned by the airbag.

SIDE IMPACT CRASH TEST

Body region scores out of 4 points each: Head 4 pts, chest 4 pts, abdomen 4 pts, pelvis 4 pts.

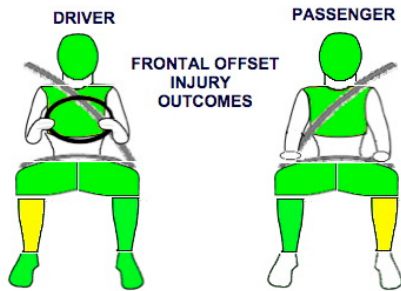
The vehicle was eligible for a pole impact test, since it had head-protecting side airbags. The vehicle earned the maximum two points in this test.

PEDESTRIAN PROTECTION: Marginal

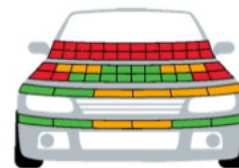
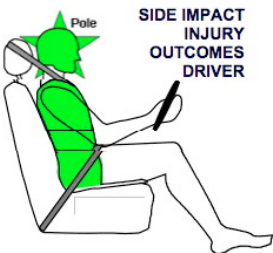
Protection provided by the bumper and front edge of the bonnet to the legs and pelvis of a struck pedestrian was good or marginal. In the area likely to be struck by the head of a child, the bonnet offered some good protection but also some areas of marginal and poor protection. Protection for the head of a struck adult was predominantly poor. The SR Turbo has similar pedestrian protection.

PEDESTRIAN PROTECTION	Child head impacts	7.34
MARGINAL	Adult head impacts	0.00
	Upper leg impacts	4.45
	Lower leg impacts	5.96
	Total (out of 36)	17.74

Tested by Euro NCAP v5.3



Whiplash Protection



JANUARY 2012

PO Box 4041
 Manuka ACT 2603
 veloster12.doc Rated: 2012
 Revised 15/8/2012



ANCAP

Crash testing for safer

AUSTRALASIAN
 NEW CAR ASSESSMENT
 PROGRAM

TECHNICAL DATA - HYUNDAI VELOSTER - From 2012

INJURY MEASUREMENTS

Body region	Offset Crash Test at 64km/h (v5.1)		Side Impact Crash Test at 50km/h (v5.1)
	Driver	Passenger	Driver
Head HIC	236	246	72
Acceleration (g for 3ms)	43.4	44.3	26.7
Neck - Shear (kN)	0.59	0.28	-
Tension (kN)	1.17	1.06	-
Extension (Nm)	17.1	17.6	-
Chest Accln (g for 3ms)	-	-	-
Compression (mm)	21.14	20.13	13.87
Viscous criterion (m/s)	0.06	0.06	0.07
Abdomen - Force (kN)	-	-	0.70
Pelvis - Force (kN)	-	-	2.04
Upper legs Force (kN)	Left	0.51	0.80
	Right	2.40	0.20
Knee displ (mm)	Left	0.50	0.30
	Right	3.60	0.80
Lower legs Force (kN)	Left	1.50	2.52
	Right	2.80	1.07
Index (Upper/Low)	Left	0.34 /0.20	0.34 /0.39
	Right	0.38 /0.24	0.38/0.2

Bonus points (maximum 5)

Pole Test: 2 pts

Seat belt reminders: 2 (see table below for details)

Modifiers - deductions from offset test scores

Head No deduction
 Chest No deduction
 Upper leg Variable & conc. loading No deduction
 Lower leg No deduction
 Foot score Score 4 points

Modifiers - deductions from side impact test scores

Chest No deduction

Safety features

These specifications are subject to change. Please check with manufacturer for the latest specifications.



Driver airbag	S	Antilock (ABS) brakes / Electronic brake distribution / Brake Assist	S/S/S
Passenger front airbag	S	Electronic stability control (ESC, VSC, DSC, ESP, VSA)	S#
Side airbags, front seats - chest protection	S	3 point seat belt for all forward-facing seats	S
Side airbags, front seats - head protection	S	Whiplash protection (RCAR protocol)	Good
Side airbags, rear seats - head protection	S	Intelligent seat belt reminder - driver	S
Driver knee airbag	X	Intelligent seat belt reminder - front passenger	S
Seat belt pretensioners (Front/Rear outboard)	S/X	Intelligent seat belt reminder - rear seats	X

Key:

S = standard on all variants

O = optional on base variant. May be standard on higher variants

V= not available on base variant but standard or optional on higher variants

X = not available on any variant

ESC required by ANCAP for 5 star rating from 2008