

Crash Test Results

New Car Safety

HYUNDAI SANTA FE (LHD)

2006 on

Front+side+head airbags*



Offset crash test at 64km/h



ANCAP

Rated ★★★★★

Occupant Protection

Occupant Protection Score 29.34 out of 37

* Safety equipment, as tested, not standard on all variants

Variant: GLS LHD Eng: 2.2 litre diesel

Kerb weight: 1790 kg Category: 4WD

Vehicles built: 2006

Important note: The diesel left-hand-drive European model was tested by Euro NCAP. Australasian specifications may vary and therefore models sold in Australasia might provide different levels of protection to those described on this page.

Model History and Safety Features

The tested model of Hyundai Santa Fe was introduced in Australia during 2006.

Dual front airbags are standard equipment. Antilock brakes (ABS), electronic brake distribution (EBD) are also standard. Side airbags, head-protecting side curtains and electronic stability control (ESC) are standard on the Australian SLX and Elite variants but are not available on the SX variant. This package is standard on all New Zealand variants. An audible seat belt reminder is fitted to the driver seat but it was not eligible for a bonus point.

The front seat belt buckles are mounted on the seats and the upper anchorages are adjustable. These features improve the fit of the seat belt. Pretensioners are fitted to the front seat belts to reduce slack in the event of a crash. A three point seat belt is fitted to the centre seat in both rear rows. This provides better protection than a two point (lap) seat belt.

OCCUPANT PROTECTION: 4 Stars

The Hyundai Santa Fe scored 12.34 out of 16 in the offset crash test. The passenger compartment held its shape well. Protection from serious leg injury was marginal for the driver. The vehicle scored 16 out of 16 in the side impact crash test and 1 point in the optional pole test.

FRONTAL OFFSET CRASH TEST (v4.1)

Body region scores out of 4 points each: Head/neck 4 pts, chest 2.7 pts, upper legs 2 pts, lower legs 3.64 pts.

The passenger compartment held its shape well in the offset crash test. The brake pedal moved rearwards by 99 mm and downwards 3mm. The steering wheel hub moved 10mm forward, 17mm downward and 2mm sideways. The front ("A") pillar moved 13 mm rearwards. All doors remained closed during the crash. After the crash the driver's door could be opened with high manual effort.


The airbag cushioned the head of the driver and contact was stable. Steering column components were a potential source of injury for the driver's knees. The passenger's head was cushioned by the airbag. Centre console components were a potential knee injury hazard for the passenger.

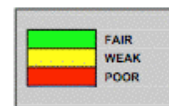
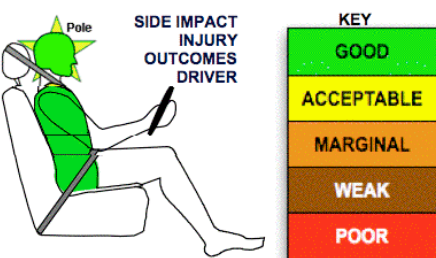
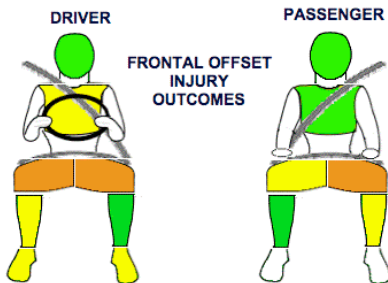
SIDE IMPACT CRASH TEST (v4.1)

Body region scores out of 4 points each: Head 4 pts, chest 4 pts, abdomen 4 pts, pelvis 4 pts.

The vehicle was eligible for an optional pole impact test, since it had head-protecting side airbags and scored four points for the head in the side impact test. The manufacturer decided to go ahead with the pole test. The curtain did not deploy fully and the vehicle earned one point out of two.

PEDESTRIAN PROTECTION RATING (v4.1)

PEDESTRIAN PROTECTION		
 Rated ★★★★★ Tested by Euro NCAP (Nil)	Child head impacts	Zero
	Adult head impacts	Zero
	Upper leg impacts	Zero
	Lower leg impacts	Zero
	Total (out of 36)	Zero



November 2007

PO Box 1555

Canberra ACT Australia
2601

santafe06.doc

Issued 9/11/07



ANCAP

Crash testing for safety

AUSTRALASIAN
NEW CAR ASSESSMENT
PROGRAM

TECHNICAL DATA - HYUNDAI SANTA FE (LHD) - 2006 on

INJURY MEASUREMENTS

Body region	Offset Crash Test at 64km/h (v4.1)		Side Impact Crash Test at 50km/h (v4.1)
	Driver	Passenger	Driver
Head HIC	237	193	13
Acceleration (g for 3ms)	38.0	36.0	14.7
Neck - Shear (kN)	0.40	0.23	-
Tension (kN)	1.36	0.66	-
Extension (Nm)	14.0	12.4	-
Chest Accln (g for 3ms)	-	-	-
Compression (mm)	31.12	19.21	16.91
Viscous criterion (m/s)	0.17	0.05	0.08
Abdomen - Force (kN)	-	-	0.470
Pelvis - Force (kN)	-	-	0.870
Upper legs Force (kN)			
Left	2.79	3.42	
Right	2.17	0.46	
Knee displ (mm)			
Left	0.20	3.60	
Right	0.00	1.00	
Lower legs Force (kN)			
Left	0.89	2.23	
Right	2.08	1.33	
Index (Upper/Low)			
Left	0.22 /0.18	0.23 /0.33	
Right	0.33 /0.16	0.36 /0.27	

Bonus points (maximum 5)

Pole Test: 1 pt

Seat belt reminders: Not eligible (see table below for details)

Modifiers - deductions from offset test scores

Head	No deduction
Chest	No deduction
Upper leg Variable & conc. loading	2 pt deduction Left & Right
Passenger	1pt Left , 2 pts Right
Lower leg	No deduction
Foot score	Blocked pedal
	Score 3.84 points

Modifiers - deductions from side impact test scores

Chest	No deduction
Pole test	Curtain did not fully deploy
	1 pt deduction

Safety features

These specifications are subject to change. Please check with manufacturer for the latest specifications.



Driver airbag	S	Antilock (ABS) brakes / Electronic brake distribution	S/S
Passenger front airbag	S	Electronic stability control (ESC, VSC, DSC, ESP, VSA)	V (NZ S)
Side airbags, front seats - chest protection	V √ (NZ S)	3 point centre rear seat belt	S
Side airbags, front seats - head protection	V √ (NZ S)	Active head restraints - front seats	
Side airbags, rear seats - head protection	V √ (NZ S)	Intelligent seat belt reminder - driver	X*
Driver knee airbag	X	Intelligent seat belt reminder - front passenger	X
Front seat belt pretensioners	S	Rear seat belt status indicator	X

* Euro NCAP found that the audible alarm for the driver's seat belt was not loud enough.

Key: √ = Fitted to vehicle that was crash tested (where not standard)

S = standard on all variants

O = optional on base variant. May be standard on higher variants

V= not available on base variant but standard or optional on higher variants

X = not available on any variant