

Crash Test Results

New Car Safety

HYUNDAI i30cw (LHD) WITH SIDE CURTAIN AIRBAGS

2009 on Front+side+head airbags*



Offset crash test at 64km/h (hatch)

FRONTAL OFFSET CRASH TEST (v4.1)

Body region scores out of 4 points each: Head/neck 4 pts, chest 3.04 pts, upper legs 2.17 pts, lower legs 3.76 pts.

The passenger compartment held its shape well in the offset crash test. The clutch pedal moved 97mm rearward and 25mm upwards. The steering wheel hub moved 1mm forward, 13mm downward and 4mm sideways. The front ("A") pillar moved 16 mm rearwards. All doors remained closed during the crash. High effort was required to open the driver's door after the crash.

The airbag cushioned the head of the driver and contact was stable. The side curtain also deployed. Dash components were a potential source of injury for the driver and passenger knees. The passenger's head was cushioned by the airbag.

SIDE IMPACT CRASH TEST (v4.1)

Body region scores out of 4 points each: Head 4 pts, chest 4 pts, abdomen 3.57 pts, pelvis 4 pts.

The vehicle was eligible for an optional pole impact test, since it had head-protecting side airbags. The manufacturer decided to go ahead with the pole test and the vehicle earned a further two points.

PEDESTRIAN PROTECTION RATING (v4.1)

Protection for the head of a struck child was predominantly fair. However, protection of adults' heads was poor, as was the protection offered by the front edge of the bonnet.



Occupant Protection Score 32.54 out of 37

* Safety equipment, as tested, not standard on all variants

Variant tested: GLS 5dr hatch Eng: 1.6

Kerb weight: 1290 kg Category: CAR - SMALL

Vehicles built: 2007 Tested by Euro NCAP

Important note: The *left-hand-drive* European *hatch* was tested by Euro NCAP. Australasian specifications may vary and therefore models sold in Australasia might provide different levels of protection to those described on this page. Hyundai provided evidence to ANCAP that this wagon variant of the i30 can be expected to provide comparable protection to the hatch tested by Euro NCAP.

Model History and Safety Features


The Hyundai i30cw was introduced in Australia during 2009.

Dual front airbags, antilock brakes (ABS) with electronic brake distribution (EBD) and Electronic Stability Control (ESC) are standard on all variants. Side airbags and curtains are standard on the SLX and optional on the SX variants. Intelligent seat belt reminders are fitted to both front seats.

The front seat belt buckles are mounted on the seats and the upper anchorages are adjustable. These features improve the fit of the seat belt. Pretensioners are fitted to the front seat belts to reduce slack in the event of a crash. A three point seat belt is fitted to the centre rear seat. This provides better protection than a two point (lap) seat belt.

OCCUPANT PROTECTION: 5 Stars

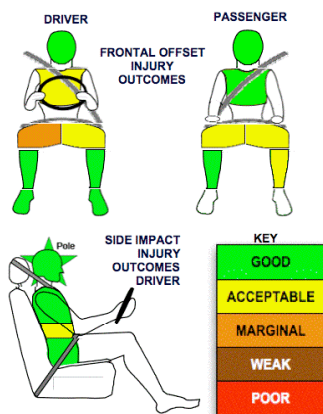
The i30 scored 12.97 out of 16 in the offset crash test. The passenger compartment held its shape well. Protection from serious leg injury was marginal for the driver. The vehicle scored 15.57 out of 16 in the side impact crash test. There was a slight risk of serious abdomen injury for the driver. A further two points were earned in the optional pole test. This 5-star rating only applies where side curtains are fitted. Without these the i30cw is a 4-star rating.

PEDESTRIAN PROTECTION		
 ANCAP Rated ★ ★ ★ ★ ★ Tested by Euro NCAP v4.1	Child head impacts	8.73
	Adult head impacts	Zero
	Upper leg impacts	Zero
	Lower leg impacts	4.84
	Total (out of 36)	13.57



Pedestrian protection

- GOOD
- ADEQUATE
- MARGINAL



May 2009

PO Box 4041

Manuka ACT Australia
2603

i30cw09.doc

Issued 7/5/09



TECHNICAL DATA - HYUNDAI i30cw with curtains - 2009 on

INJURY MEASUREMENTS

Body region	Offset Crash Test at 64km/h (v4.1)		Side Impact Crash Test at 50km/h (v4.1)
	Driver	Passenger	Driver
Head HIC	156	200	48
Acceleration (g for 3ms)	33.0	36.4	30.7
Neck - Shear (kN)	0.40	0.43	-
Tension (kN)	1.12	0.79	-
Extension (Nm)	7.9	24.1	-
Chest Accln (g for 3ms)	-	-	-
Compression (mm)	28.75	19.44	19.88
Viscous criterion (m/s)	0.12	0.06	0.13
Abdomen - Force (kN)	-	-	1.160
Pelvis - Force (kN)	-	-	1.010
Upper legs Force (kN)			
Left	1.86	2.85	
Right	1.89	0.21	
Knee displ (mm)			
Left	0.10	0.00	
Right	7.87	0.40	
Lower legs Force (kN)			
Left	0.69	2.36	
Right	1.27	1.61	
Index (Upper/Low)			
Left	0.17 /0.16	0.41 /0.23	
Right	0.36 /0.19	0.39/0.3	

Bonus points (maximum 5)

Pole Test: 2

Seat belt reminders: 2 (see table below for details)

Modifiers - deductions from offset test scores

Head	No deduction
Chest	No deduction
Upper leg Variable contact`	1 pt deduction Drv L & R 1 pt deduction Pass L & R
Lower leg	No deduction
Foot score	Score 4 points

Modifiers - deductions from side impact test scores

Chest	No deduction
-------	--------------

Safety features

These specifications are subject to change. Please check with manufacturer for the latest specifications.



Driver airbag	S	Antilock (ABS) brakes / Electronic brake distribution/Brake Assist	S/S/X
Passenger front airbag	S	Electronic stability control (ESC, VSC, DSC, ESP, VSA)	S
Side airbags, front seats - chest protection	O √	3 point centre rear seat belt	S
Side airbags, front seats - head protection	O √	Active head restraints - front seats	S
Side airbags, rear seats - head protection	O √	Intelligent seat belt reminder - driver	S
Driver knee airbag	X	Intelligent seat belt reminder - front passenger	S
Seat belt pretensioners front/rear outboard	S/X	Rear seat belt status indicator	X*

* The vehicle rated by Euro NCAP had a rear seat belt status indicator. This is not available on the Australian model.

Key: √ = Fitted to vehicle that was crash tested (where not standard)

S = standard on all variants

O = optional on base variant. May be standard on higher variants

V= not available on base variant but standard or optional on higher variants

X = not available on any variant