

ANCAP Safety Rating: HYUNDAI i30 (January 2015 - onwards)



Frontal offset test at 64km/h (Euro NCAP)

This ANCAP safety rating applies to:

Make / Model	Hyundai i30
Year Range	January 2015 - onwards
Variant(s)*	All variants
Vehicle Type	Small Car

The Hyundai i30 Series II was introduced in Australia and New Zealand in May 2015. This ANCAP safety rating applies to all updated i30 variants, including the wagon, built from January 2015.

Dual frontal, side chest and side head airbags (curtains) and a driver knee airbag are standard. Electronic Brakeforce Distribution (EBD) and Emergency Brake Assist (EBA) are also standard. Advanced seat belt reminders are fitted to all seats.

Injury Outcomes.

Frontal Offset



Side Impact & Pole#



Whiplash Protection



Head protection only.

Test Results Summary.

Airbags	Dual Frontal, Side, Head, Knee
Frontal Offset Test	15.35 (out of 16)
Side Impact Test	15.33 (out of 16)
Pole Test	2 (out of 2)
Whiplash Protection	Good
Pedestrian Protection	Acceptable
ESC	Standard
Seat Belt Reminders	3.0 (out of 3)
Overall Score	35.69 (out of 37)
ANCAP Safety Rating	★★★★★
Rating Year [^]	2014

Occupant Protection.

Frontal Offset Test

Each body region is scored out of 4 points

Head / neck:	4.00 points
Chest:	3.62 points
Upper legs:	4.00 points
Lower legs:	3.73 points

The passenger compartment held its shape well in the frontal offset test. Pedal and steering wheel displacements were well controlled. Driver and passenger contact with the airbags was stable. All doors remained closed during the crash. After the crash, all doors could be opened with normal effort.

Side Impact Test

Each body region is scored out of 4 points

Head:	4.00 points
Chest:	3.33 points
Abdomen:	4.00 points
Pelvis:	4.00 points

There was a slight risk of serious chest injury for the driver in the side impact test.

Pole Test

Scored out of 2 points

Score:	2.00 points
--------	-------------

The vehicle was eligible for a side pole test because it has side curtain airbags. The vehicle scored the maximum 2 points for head protection in this test.

Whiplash Protection Test

Whiplash protection is assessed to the RCAR Protocol

Geometric test:	Good
Dynamic test:	Good
Overall whiplash rating:	Good

ANCAP Safety Rating: HYUNDAI i30 (January 2015 - onwards)



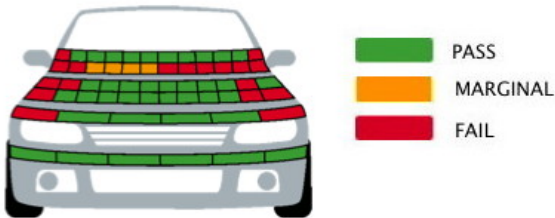
Pedestrian Protection.

Pedestrian Test

Scored out of 36 points

Adult & child head impacts: 14.26 points
Upper leg impacts: 4.00 points
Lower leg impacts: 6.00 points

This vehicle scored 24.26 out of 36 points (Acceptable). The bumper provided Good protection to pedestrians and the car scored maximum points in this area. The front edge of the bonnet provided predominantly Good protection. In most areas where a child's head might strike, the bonnet provided Good protection but the protection of an adult's head was mixed. (Tested by Euro NCAP v5)



Score Deductions.

Deductions from frontal offset test scores

Head / neck: No deductions
Chest: No deductions
Upper legs: No deductions
Lower legs: No deductions

Deductions from side impact test score

Chest: No deductions

Deductions from pole test score

Head: No deductions

Safety Features & Technologies.

Descriptions of each of these safety features and safety assist technologies (SAT) and detail on fitting requirements for each star rating level can be found at ancap.com.au.

Safety Feature / Safety Assist Technology	Availability
Seat belts (three-point) for all forward-facing seats	S
Seat belt pretensioners (front)	S
Seat belt pretensioners (rear outboard)	X
Intelligent seat belt reminder (driver)	S
Intelligent seat belt reminder (front passenger)	S
Intelligent seat belt reminder (2 nd row seats)	S
Airbag - Front (driver)	S
Airbag - Front (passenger)	S
Airbag - Side, chest protection (front seats)	S
Airbag - Side, chest protection (2 nd row seats)	X
Airbag - Side, head protection (front seats)	S
Airbag - Side, head protection (2 nd row seats)	S
Airbag - Knee (driver)	S [#]
Airbag - Knee (front passenger)	X
Head restraints for all seats	S
Adaptive cruise control (ACC)	X
Antilock braking system (ABS)	S
Automatic headlights	V
Autonomous emergency braking (AEB)	X
Electronic brakeforce distribution (EBD)	S
Electronic stability control (ESC)	S
Emergency brake assist (EBA)	S
Lane support system (LSS)	X
Daytime running lights (DRL)	V
Hill launch assist	V
Reversing collision avoidance	S
Manual speed assistance (driver-set speed limiter)	V
Tyre pressure monitoring system (TPMS)	X

These specifications are subject to change. Please check with the manufacturer for the latest specifications.

S = Standard on all variants.

O = Optional on base variant. May be standard on higher variants.

V = Not available on base variant but standard or optional on higher variants.

X = Not available on any variant.

E = Available in Europe / USA but not available on any Australasian variant.

= Knee airbag standard in Australasia but not fitted to the vehicle tested by Euro NCAP. ANCAP was provided with technical information showing good upper leg protection with the knee airbag.

ANCAP Safety Rating: HYUNDAI i30 (January 2015 - onwards)



Injury Values & Measurements.

Body Region	Frontal offset test at 64 km/h (v5.3)		Side impact test at 50 km/h (v5.3)
	Driver	Passenger	Driver
Head			
HIC	364.00	296.00	27.00
Acceleration (g for 3ms)	44.60	44.90	17.60
Neck			
Shear (kN)	0.51	0.56	-
Tension (kN)	1.25	1.10	-
Extension (Nm)	15.40	10.10	-
Chest			
Acceleration (g for 3ms)	-	-	-
Compression (mm)	24.35	24.63	25.33
Viscous criterion (m/s)	0.08	0.10	0.20
Abdomen			
Force (kN)	-	-	0.94
Pelvis			
Force (kN)	-	-	2.29
Upper legs			
Femur force left (kN)	0.12	0.50	
Femur force right (kN)	0.54	0.30	
Knee displacement left (mm)	0.10	1.10	
Knee displacement right (mm)	0.20	0.00	
Lower legs			
Force left (kN)	2.41	1.72	
Force right (kN)	1.71	1.67	
Index (upper / lower) left	0.35 / 0.28	0.24 / 0.25	
Index (upper / lower) right	0.35 / 0.27	0.38 / 0.22	
Intrusion Measurements*			
Steering column			
Forward (mm)	30		
Downward (mm)	3		
Sideways (mm)	16		
Pedals			
Clutch - rearward (mm)	53		
Brake - upward (mm)	27		
A-Pillar			
Rearward (mm)	1		

* ANCAP safety ratings do not automatically extend to variants that have different body styles, engine configurations, driven wheels or occupant restraint systems (e.g. fewer airbags). In these cases, ANCAP considers technical evidence submitted by manufacturers before deciding on extending a rating to additional variants of a model. For further information about the application of ANCAP safety ratings to model variants, see the ANCAP Variant Policy.

^ The Rating Year denotes the year requirements against which a vehicle has been assessed. The Rating Year is determined by ANCAP and may be based on the year in which a new vehicle model is first launched into the Australian and/or New Zealand markets; the year in which the vehicle was tested (if tested by Euro NCAP); or, for vehicles which hold an existing ANCAP safety rating, the year in which the rating was updated (or earlier applicable year).

Assessment Details.

Tested Make / Model	Hyundai i30 1.4MPI GLS, LHD
Tested Vehicle(s) Built	2012
Tested Body Type	5 door hatch
Tested Vehicle Kerb Weight	1310 kg
Tested Vehicle Engine	1.4 petrol
Tested By	Euro NCAP
Assessed By	ANCAP
Document Reference	i30_15
Document Created / Revised	12 May 2015
Rating Published	May 2015
Rating Updated	n/a

