

Crash Test Results

New Car Safety

HYUNDAI i30 (LHD)

WITHOUT SIDE CURTAIN AIRBAGS

May 2008 on

Dual front airbags



Offset crash test at 64km/h

FRONTAL OFFSET CRASH TEST (v4.1)

Body region scores out of 4 points each: Head/neck 4 pts, chest 3.04 pts, upper legs 2.17 pts, lower legs 3.76 pts.

The passenger compartment held its shape well in the offset crash test. The clutch pedal moved 97mm rearward and 25mm upwards. The steering wheel hub moved 1mm forward, 13mm downward and 4mm sideways. The front ("A") pillar moved 16 mm rearwards. All doors remained closed during the crash. High effort was required to open the driver's door after the crash.

The airbag cushioned the head of the driver and contact was stable. The side curtain also deployed. Dash components were a potential source of injury for the driver and passenger knees. The passenger's head was cushioned by the airbag.

SIDE IMPACT CRASH TEST (v4.1)

Body region scores out of 4 points each: Head 4 pts, chest 2 pts, abdomen 2.13 pts, pelvis 4 pts.

The vehicle was not eligible for an optional pole impact test, since it did not have head-protecting side airbags. A separate ANCAP rating is available for the curtain-equipped i30.

PEDESTRIAN PROTECTION RATING

Protection for the head of a struck child was predominantly fair. However, protection of adults' heads was poor, as was the protection offered by the front edge of the bonnet.



Occupant Protection Score 27.10 out of 37

Variant: GLS 5dr hatch

Eng: 1.6

Kerb weight: 1290 kg

Category: SMALL CAR

Vehicles built: 2007

Tested by Euro NCAP & ANCAP

Important note: The *left-hand-drive* European model was offset tested by Euro NCAP. Australasian specifications may vary and therefore models sold in Australasia might provide different levels of protection to those described on this page. Australasian i30s built from May 2008 have an upgraded knee impact zone and this assessment applies to the upgraded model without inflatable side curtains.

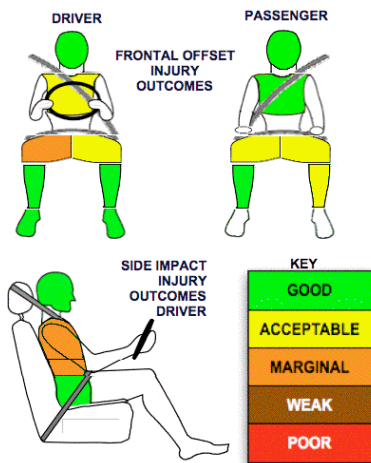
Model History and Safety Features


The tested model of Hyundai i30 was introduced in Australia during 2007.

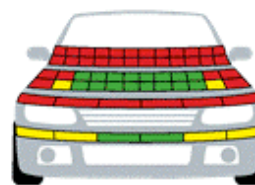
Dual front airbags and antilock brakes (ABS) with electronic brake distribution (EBD) are standard on all variants. Side airbags, head-protecting side curtains and Electronic stability control (ESC) are standard on all New Zealand variants and the Australian SR variant. Side airbags and curtains are standard on the SLX and optional on the SX variants and ESC is optional on both. Intelligent seat belt reminders are fitted to both front seats. The front seat belt buckles are mounted on the seats and the upper anchorages are adjustable. These features improve the fit of the seat belt. Pretensioners are fitted to the front seat belts to reduce slack in the event of a crash. A three point seat belt is fitted to the centre rear seat. This provides better protection than a two point (lap) seat belt.

OCCUPANT PROTECTION: 4 Stars

The i30 scored 12.97 out of 16 in the offset crash test. The passenger compartment held its shape well. Protection from serious leg injury was marginal for the driver. The vehicle scored 12.13 out of 16 in the side impact crash test. There was a moderate risk of serious chest and abdomen injury for the driver.



PEDESTRIAN PROTECTION		
 ANCAP Rated ★ ★ ★ ★ ★ Tested by Euro NCAP v4.1	Child head impacts	8.73
	Adult head impacts	Zero
	Upper leg impacts	Zero
	Lower leg impacts	4.84
	Total (out of 36)	13.57



■ GOOD
■ ADEQUATE
■ MARGINAL

June 2008

PO Box 1555

Canberra ACT

Australia 2601

i30_08x.doc

Issued 28/5/08



www.ancap.com.au

TECHNICAL DATA - HYUNDAI i30 without curtains - 2007 on

INJURY MEASUREMENTS

Body region	Offset Crash Test at 64km/h (v4.1)		Side Impact Crash Test at 50km/h (v4.1)
	Driver	Passenger	Driver
Head HIC	156	200	51
Acceleration (g for 3ms)	33.0	36.4	20.5
Neck - Shear (kN)	0.40	0.43	-
Tension (kN)	1.12	0.79	-
Extension (Nm)	7.9	24.1	-
Chest Accln (g for 3ms)	-	-	-
Compression (mm)	28.75	19.44	10.10
Viscous criterion (m/s)	0.12	0.06	0.08
Abdomen - Force (kN)	-	-	1.700
Pelvis - Force (kN)	-	-	2.070
Upper legs Force (kN)			
Left	1.86	2.85	
Right	1.89	0.21	
Knee displ (mm)			
Left	0.10	0.00	
Right	7.87	0.40	
Lower legs Force (kN)			
Left	0.69	2.36	
Right	1.27	1.61	
Index (Upper/Low)			
Left	0.17 /0.16	0.41 /0.23	
Right	0.36 /0.19	0.39/0.3	

Bonus points (maximum 5)

Pole Test: Not eligible due to a lack of head-protecting side airbags

Seat belt reminders: 2 (see table below for details)

Modifiers - deductions from offset test scores

Head	No deduction
Chest	No deduction
Upper leg Variable contact	1 pt deduction Drv L & R 1 pt deduction Pass L & R
Lower leg	No deduction
Foot score	Score 4 points

Modifiers - deductions from side impact test scores

Chest T12 loads	2 pt deduction
-----------------	----------------

Safety features

These specifications are subject to change. Please check with manufacturer for the latest specifications.



Driver airbag	S	Antilock (ABS) brakes / Electronic brake distribution/Brake Assist	S/S/X (S NZ)
Passenger front airbag	S	Electronic stability control (ESC, VSC, DSC, ESP, VSA)	O #
Side airbags, front seats - chest protection	O (S NZ)	3 point centre rear seat belt	S
Side airbags, front seats - head protection	O (S NZ)	Active head restraints - front seats	S
Side airbags, rear seats - head protection	O (S NZ)	Intelligent seat belt reminder - driver	S
Driver knee airbag	X	Intelligent seat belt reminder - front passenger	S
Seat belt pretensioners (front/rear outboard)	S/X	Rear seat belt status indicator	X*

* The vehicle rated by Euro NCAP had a rear seat belt status indicator. This is not available on the Australian model.

Key:

S = standard on all variants

O = optional on base variant. May be standard on higher variants

V= not available on base variant but standard or optional on higher variants

X = not available on any variant

ESC required by ANCAP for 5 star rating from 2008