

# Crash Test Results

## New Car Safety

### HYUNDAI GETZ 1.6 SX 5-door\*

Mid 2008 on

Front+side airbags



Offset crash test at 64km/h

The Hyundai Getz scored 10.07 out of 16 in the offset crash test. The passenger compartment held its shape well. Protection from serious chest and leg injury was marginal for the driver.

The vehicle scored 14.282 out of 16 in the side impact crash test. There was a moderate risk of serious chest injury for the driver.

A separate ANCAP rating is available for the 3 door Getz without side airbags.

#### FRONTAL OFFSET CRASH TEST (v4.0)

Body region scores out of 4 points each: Head/neck 4 pts, chest 2.2 pts, upper legs 2 pts, lower legs 1.87 pts.

The passenger compartment held its shape well in the offset crash test. The clutch pedal moved rearwards by 90 mm. The brake pedal moved downwards 2mm. The steering wheel hub moved 5 mm rearward, 18 mm upward and 11mm sideways. The front ("A") pillar moved 27 mm rearwards. All doors remained closed during the crash. After the crash high manual effort was required to open the driver door.


The airbag cushioned the head of the driver and contact was stable. Steering column components were a potential source of injury for the driver's knees. The passenger's head was cushioned by the airbag.

#### SIDE IMPACT CRASH TEST (v4.0)

Body region scores out of 4 points each: Head 4 pts, chest 2.47 pts, abdomen 3.81 pts, pelvis 4 pts.

The vehicle was not eligible for a Pole Impact Test since it did not have head-protecting side airbags. This test can earn eligible vehicles an extra two points.

#### PEDESTRIAN PROTECTION: 1 Star

PEDESTRIAN PROTECTION		
 <b>ANCAP</b> Rated ★ ★ ★ ★ ★ Tested by Euro NCAP v4.0	Child head impacts	0.96
	Adult head impacts	4
	Upper leg impacts	Zero
	Lower leg impacts	Zero
	Total (out of 36)	4.96

[No picture of pedestrian results available]



September 2008

PO Box 4041  
 Manuka ACT 2603  
 getz08.doc  
 Issued 17/9/2008



**Occupant Protection Score 25.35 out of 37**

\* Safety equipment, as tested, not standard on all variants

Variant: 5 door hatch Eng: 1.3 litre (test vehicle))

Kerb weight: 1070 kg Category: SMALL CAR

Vehicles built: 2004 Tested by Euro NCAP

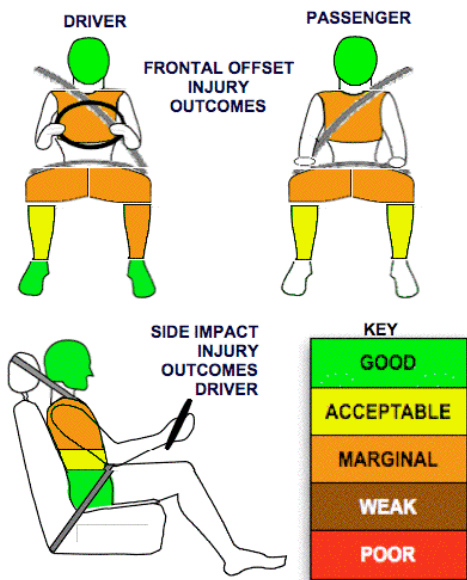
**Important note:** The *left-hand-drive 1.3 litre* European model was tested by Euro NCAP. Australasian specifications may vary and therefore models sold in Australasia might provide different levels of protection to those described on this page. *This 4 star ANCAP rating only applies to 5-door Getz that are fitted with an intelligent seat belt reminder for the driver seat and side-thorax airbags.* These are fitted to the MY2009 Getz 1.6 SX with the optional Protectz Pack.

#### Model History and Safety Features

The tested model of Hyundai Getz was introduced in Australia and New Zealand during 2002. A safety upgrade applies to Getz from mid 2008 (Model Year 2009).

Dual front airbags standard equipment in Australia. Antilock brakes (ABS) with electronic brakeforce distribution (EBD) and electronic stability control (ESC) are standard or optional, depending on the variant. Side airbags with thorax (chest) protection are optional as part of the Protectz Pack for the 1.6 SX variant. Head-protecting side airbags are not available. The front seat belt buckles are mounted on the seats and the upper anchorages are adjustable. These features improve the fit of the seat belt. Pretensioners are fitted to the front seat belts to reduce slack in the event of a crash. A three point seat belt is fitted to the centre rear seat. This provides better protection than a two point (lap) seat belt.

#### OCCUPANT PROTECTION: 4 Stars



# TECHNICAL DATA - HYUNDAI GETZ - Mid 2008 on

## INJURY MEASUREMENTS

Body region	Offset Crash Test at 64km/h (v4.0)		Side Impact Crash Test at 50km/h (v4.0)
	Driver	Passenger	Driver
<b>Head HIC</b>	456	291	75
Acceleration (g for 3ms)	47.3	43.6	26.2
<b>Neck - Shear (kN)</b>	0.34	0.72	-
Tension (kN)	1.71	1.46	-
Extension (Nm)	26.4	18.6	-
<b>Chest Accln (g for 3ms)</b>	-	-	-
Compression (mm)	33.84	34.58	26.39
Viscous criterion (m/s)	0.13	0.17	0.21
<b>Abdomen - Force (kN)</b>	-	-	1.070
<b>Pelvis - Force (kN)</b>	-	-	2.660
<b>Upper legs Force</b>			
Left (kN)	2.50	2.67	
Right (kN)	0.99	0.70	
<b>Knee displ (mm)</b>			
Left	0.00	3.33	
Right	2.92	0.59	
<b>Lower legs Force</b>			
Left (kN)	1.39	2.18	
Right (kN)	2.27	2.23	
<b>Index (Upper/Low)</b>			
Left	0.22 /0.88	0.23 /0.22	
Right	0.39 /0.51	0.18/0.28	

### Bonus points (maximum 5)

Pole Test: Not eligible due to a lack of head-protecting side airbags

Seat belt reminders: 1 (see table below for details)

### Modifiers - deductions from offset test scores

Head	No deduction
Chest	No deduction
Upper leg Variable & conc. loading	2 pt deduction Left & Right
Lower leg	No deduction
Foot score	Score 4 points

### Modifiers - deductions from side impact test scores

Chest Backplate load	0.65 pt deduction
----------------------	-------------------

### Safety features (New Zealand only)

These specifications are subject to change. Please check with manufacturer for the latest specifications.



Driver airbag	S	Antilock (ABS) brakes / Electronic brake distribution / Brake Assist	O/O/X
Passenger front airbag	S	Electronic stability control (ESC, VSC, DSC, ESP, VSA)	O#
Side airbags, front seats - chest protection	V √	3 point centre rear seat belt	S
Side airbags, front seats - head protection	X	Active head restraints - front seats	S
Side airbags, rear seats - head protection	X	Intelligent seat belt reminder - driver	V*
Driver knee airbag	X	Intelligent seat belt reminder - front passenger	X
Seat belt pretensioners (front/rear)	S/X	Rear seat belt status indicator	X

\* An audible driver seat belt reminder is fitted as part of the optional Protectz Pack for MY2009 1.6 SX Getz. This 4 star rating only applies to vehicles with this system plus side airbags. Vehicles without these receive a 3 star occupant protection rating.

Key: √ = Fitted to vehicle that was crash tested (where not standard)

S = standard on all variants

O = optional on base variant. May be standard on higher variants

V = not available on base variant but standard or optional on higher variants

X = not available on any variant

# ESC required by ANCAP for 5 star rating from 2008