

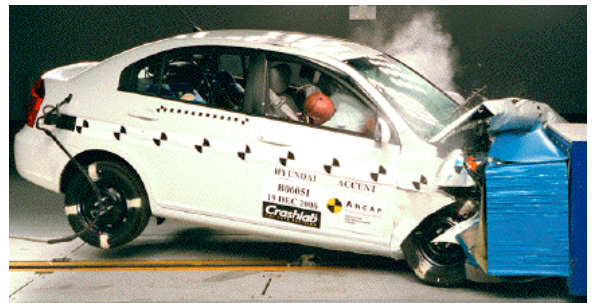
Crash Test Results

New Car Safety

HYUNDAI ACCENT

2006 on

Dual front airbags



Offset crash test at 64km/h

FRONTAL OFFSET CRASH TEST (v4.1)

Body region scores out of 4 points each: Head/neck 4 pts, chest 1.77 pts, upper legs 2 pts, lower legs 1.6 pts.

The passenger compartment held its shape well in the offset crash test. The brake pedal moved rearwards by 81 mm and downwards 13mm. The steering wheel hub moved rearwards 24 mm, upwards 37 mm and sideways 8 mm. The front ("A") pillar moved 30 mm rearwards. All doors remained closed during the crash. After the crash tools were required to open the driver's door.

The airbag cushioned the head of the driver and contact was stable. Steering column components were a potential source of injury for the driver's knees. The passenger's head was cushioned by the airbag.

SIDE IMPACT CRASH TEST (v4.1)

Body region scores out of 4 points each: Head 4 pts, chest zero pts, abdomen 2.85 pts, pelvis 4 pts.

The vehicle was not eligible for a Pole Impact Test since it did not have head-protecting side airbags. This test can earn eligible vehicles an extra two points.

PEDESTRIAN PROTECTION RATING (v4.1)

Occupant Protection Score 21.21 out of 37

Variant: Sedan S auto Eng: 1.6 litre

Kerb weight: 1180 kg Category: SMALL CAR

Vehicles built: 9/06

Model History and Safety Features

The tested model of Hyundai Accent was introduced in Australia during 2006.


Dual front airbags are standard equipment. Antilock brakes (ABS) with electronic brake distribution (EBD), side airbags and head-protecting side curtains are standard on SLX variants but are not available on the S variants in Australia. This package is standard on all New Zealand variants. An intelligent seat belt reminder is fitted to the driver seat.

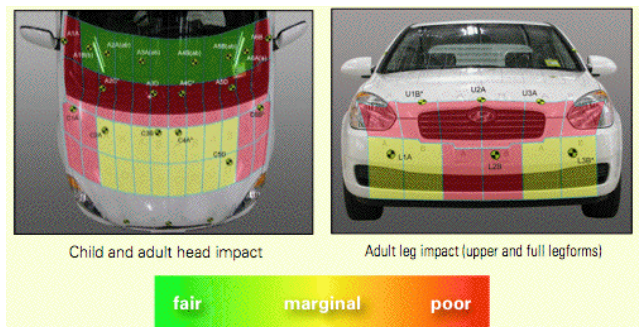
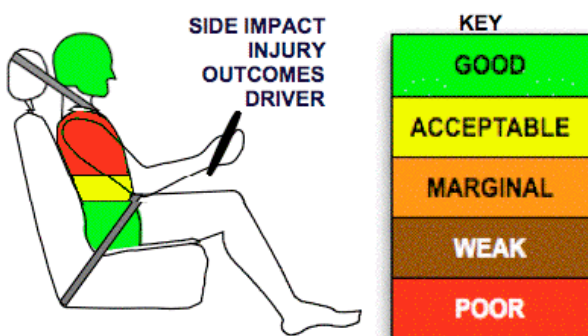
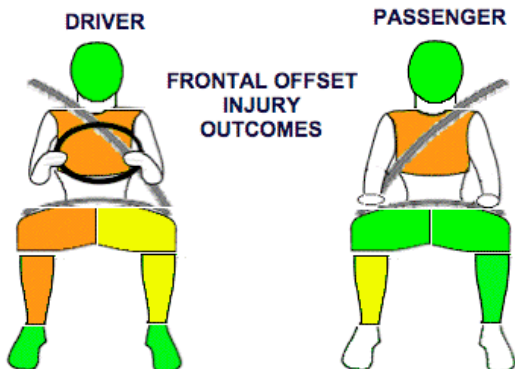
The front seat belt buckles are mounted on the seats and the upper anchorages are adjustable. These features improve the fit of the seat belt. Pre-tensioners are fitted to the front seat belts to reduce slack in the event of a crash. A three point seat belt is fitted to the centre rear seat. This provides better protection than a two point (lap) seat belt.

OCCUPANT PROTECTION: 3 Stars

The Hyundai Accent scored 9.37 out of 16 in the offset crash test. The passenger compartment held its shape well. Protection from serious chest and leg injury was marginal for the driver. Passenger chest protection was marginal.

The vehicle scored 10.85 out of 16 in the side impact crash test. Chest protection for the driver was poor.

PEDESTRIAN PROTECTION		
 ANCAP Rated ★ ★ ★ ★	Child head impacts	4.57
	Adult head impacts	5.00
	Upper leg impacts	Zero
	Lower leg impacts	0.80
	Total (out of 36)	10.37



November 2007

PO Box 1555
 Canberra ACT
 Australia 2601
 accent06.doc
 Issued 9/11/07



TECHNICAL DATA - HYUNDAI ACCENT - 2006 on

INJURY MEASUREMENTS

Body region	Offset Crash Test at 64km/h (v4.1)		Side Impact Crash Test at 50km/h (v4.1)
	Driver	Passenger	Driver
Head HIC	454	342	162
Acceleration (g for 3ms)	54.7	47.6	57.2
Neck - Shear (kN)	0.30	0.73	-
Tension (kN)	1.31	1.49	-
Extension (Nm)	19.1	8.3	-
Chest Accln (g for 3ms)	45.600	34.000	-
Compression (mm)	37.64	33.86	40.12
Viscous criterion (m/s)	0.13	0.14	0.56
Abdomen - Force (kN)	-	-	1.432
Pelvis - Force (kN)	-	-	2.320
Upper legs Force			
Left (kN)	1.92	0.32	
Right (kN)	2.10	2.28	
Knee displ (mm)			
Left	4.68	0.36	
Right	1.04	5.83	
Lower legs Force			
Left (kN)	2.03	1.53	
Right (kN)	1.71	2.22	
Index (Upper/Low)			
Left	0.48 /0.61	0.30 /0.19	
Right	0.36 /0.94	0.33/0.21	

Bonus points (maximum 5)

Pole Test: Not eligible due to a lack of head-protecting side airbags

Seat belt reminders: 1 (see table below for details)

Modifiers - deductions from offset test scores

Head No deduction
 Chest No deduction
 Upper leg Variable & conc. loading 2 pt deduction Right
 1 pt deduction Left
 Lower leg No deduction
 Foot score Score 4 points

Note: Steering column and pedal movements are measured relative to the driver's seat.



Modifiers - deductions from side impact test scores

Chest Spine loads 0.72 pt deduction

Safety features

These specifications are subject to change. Please check with manufacturer for the latest specifications.

Driver airbag	S	Antilock (ABS) brakes / Electronic brake distribution	V/V (NZ S/S)
Passenger front airbag	S	Electronic stability control (ESC, VSC, DSC, ESP, VSA)	X
Side airbags, front seats - chest protection	V (NZ S)	3 point centre rear seat belt	S
Side airbags, front seats - head protection	V (NZ S)	Active head restraints - front seats	X
Side airbags, rear seats - head protection	V (NZ S)	Intelligent seat belt reminder - driver	S
Driver knee airbag	X	Intelligent seat belt reminder - front passenger	X
Front seat belt pretensioners	S	Rear seat belt status indicator	X

Key:

S = standard on all variants

O = optional on base variant. May be standard on higher variants

V= not available on base variant but standard or optional on higher variants

X = not available on any variant