

ANCAP Safety Rating: HYUNDAI TUCSON (2015 - onwards)



Frontal offset test at 64km/h

This ANCAP safety rating applies to:

Make / Model	Hyundai Tucson
Year Range	2015 - onwards
Variants*	2.0 litre GDi Petrol 2WD
Vehicle Type	Medium SUV

The tested model of Hyundai Tucson was introduced in Australia and New Zealand in mid-2015. This rating applies to 2-wheel-drive variants with the 2.0 litre GDi petrol engine.

Dual frontal, side chest and side head airbags (curtains) are standard. Electronic Brake Distribution (EBD) and Emergency Brake Assist (EBA) are also standard. Advanced seat belt reminders are fitted to all seats. Advanced crash avoidance features are available on higher-priced variants.

Driver leg and foot protection was marginal in the frontal offset test. There was a slight risk of serious chest injury to the driver in this test.

Injury Outcomes.

Frontal Offset

Driver

Passenger



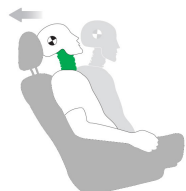
Side Impact & Pole*

Driver



Whiplash Protection

Driver



* Head protection only.

Test Results Summary.

Airbags	Dual Frontal, Side, Head
Frontal Offset Test	11.46 (out of 16)
Side Impact Test	16.00 (out of 16)
Pole Test	2 (out of 2)
Whiplash Protection	Good
Pedestrian Protection	Marginal
ESC	Standard
Seat Belt Reminders	3.0 (out of 3)
Overall Score	32.46 (out of 37)
ANCAP Safety Rating	★★★★★
Rating Year[^]	2015

Occupant Protection.

Frontal Offset Test

Each body region is scored out of 4 points

Head / neck:	4.00 points
Chest:	3.05 points
Upper legs:	4.00 points
Lower legs:	0.41 points

The structural integrity of the driver footwell was compromised in the frontal offset crash test. There was also excessive rearward and upward movement of the brake pedal.

Side Impact Test

Each body region is scored out of 4 points

Head:	4.00 points
Chest:	4.00 points
Abdomen:	4.00 points
Pelvis:	4.00 points

The side impact test normally used by ANCAP simulates a small car striking the driver's door of the test vehicle. Experience shows that high vehicles like the Tucson can be expected to perform well in this test. ANCAP has adopted a policy of awarding these types of vehicles a default score of 16 points (out of 16).

Pole Test

Scored out of 2 points

Score:	2.00 points
--------	-------------

The vehicle was eligible for a side pole test because it has side curtain airbags. The vehicle scored the maximum 2 points for head protection in this test.

Whiplash Protection Test

Whiplash protection is assessed to the RCAR Protocol

Geometric test:	Good
Dynamic test:	Good
Overall whiplash rating:	Good

ANCAP Safety Rating: HYUNDAI TUCSON (2015 - onwards)



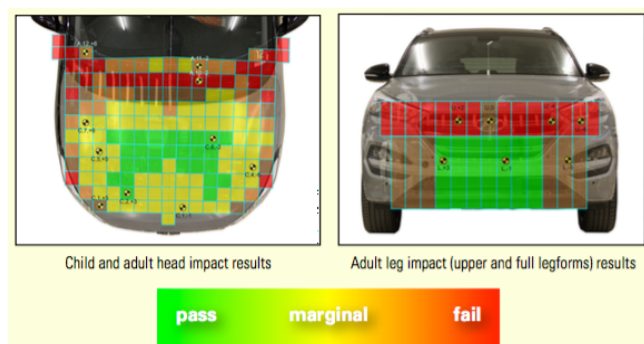
Pedestrian Protection.

Pedestrian Test

Scored out of 36 points

Adult & child head impacts: 13.58 points
Upper leg impacts: 0.15 points
Lower leg impacts: 4.62 points

This vehicle scored 18.35 out of 36 points (Marginal). Some points have been gained in the central area of the bonnet. Improvements could be made to the upper leg area that would result in better performance for this vehicle. The European model tested by Euro NCAP had a pop-up bonnet that provided less injury risk to pedestrians. This is not available on Australasian models. (v8)



Score Deductions.

Deductions from frontal offset test scores

Head / neck: No deduction
Chest: No deduction
Upper legs: No deduction
Lower legs/feet: - 0.431 pts (excessive brake pedal vertical movement, 79mm)
- 1.788 pts (excessive brake pedal rearward movement, 145mm)
- 1 pts (footwell rupture)

Deductions from side impact test score

Chest: High-seat vehicle: default side impact score awarded.

Deductions from pole test score

Head: No deductions.

Safety Features & Technologies.

Descriptions of each of these safety features and safety assist technologies (SAT) and detail on fitting requirements for each star rating level can be found at ancap.com.au.

Safety Feature / Safety Assist Technology	Availability
Seat belts (three-point) for all forward-facing seats	S
Seat belt pretensioners (front)	S
Seat belt pretensioners (rear outboard)	X
Intelligent seat belt reminder (driver)	S
Intelligent seat belt reminder (front passenger)	S
Intelligent seat belt reminder (2 nd row seats)	S
Airbag - Front (driver)	S
Airbag - Front (passenger)	S
Airbag - Side, chest protection (front seats)	S
Airbag - Side, chest protection (2 nd row seats)	X
Airbag - Side, head protection (front seats)	S
Airbag - Side, head protection (2 nd row seats)	S
Airbag - Knee (driver)	X
Airbag - Knee (front passenger)	X
Head restraints for all seats	S
Active (pop-up) bonnet for pedestrian protection	E
Adaptive cruise control (ACC)	X
Antilock braking system (ABS)	S
Autonomous emergency braking (AEB)	V
Daytime running lights (DRL)	S
Electronic brakeforce distribution (EBD)	S
Electronic stability control (ESC)	S
Emergency brake assist (EBA)	S
Hill launch assist	S
Lane support system (LSS)	O
Reversing collision avoidance	S
Tyre pressure monitoring system (TPMS)	V

These specifications are subject to change. Please check with the manufacturer for the latest specifications.

S = Standard on all variants.
O = Optional on base variant. May be standard on higher variants.
V = Not available on base variant but standard or optional on higher variants.
X = Not available on any variant.
E = Available in Europe / USA but not available on any Australasian variant.

ANCAP Safety Rating: HYUNDAI TUCSON (2015 - onwards)



ANCAP

Safety ★★★★★



Injury Values & Measurements.

Body Region	Frontal offset test at 64 km/h (v5.1)		Side impact test at 50 km/h (v5.1)	
	Driver	Passenger	Driver	
Head				
HIC	284.00	251.00	HIGH-SEAT VEHICLE DEFAULT SCORE AWARDED	
Acceleration (g for 3ms)	41.90	39.80		
Neck				
Shear (kN)	0.47	0.43		
Tension (kN)	0.97	0.81		
Extension (Nm)	16.80	23.60		
Chest				
Acceleration (g for 3ms)	-	-		
Compression (mm)	28.68	17.20		
Viscous criterion (m/s)	0.07	0.05		
Abdomen				
Force (kN)	-	-		
Pelvis				
Force (kN)	-	-		
Upper legs				
Femur force left (kN)	0.71	0.09		
Femur force right (kN)	0.22	0.17		
Knee displacement left (mm)	5.63	0.41		
Knee displacement right (mm)	0.21	0.18		
Lower legs				
Force left (kN)	1.66	1.26		
Force right (kN)	1.72	1.34		
Index (upper / lower) left	0.56 / 1.11	0.32 / 0.17		
Index (upper / lower) right	0.43 / 0.48	0.30 / 0.13		
Intrusion Measurements⁺				
Steering column				
Forward (mm)	22			
Upward (mm)	1			
Sideways (mm)	28			
Pedals				
Brake - rearward (mm)	145			
Brake - upward (mm)	79			
A-Pillar				
Rearward (mm)	1			

+ Steering column and pedal movements are measured relative to the driver's seat.

* ANCAP safety ratings do not automatically extend to variants that have different body styles, engine configurations, driven wheels or occupant restraint systems (e.g. fewer airbags). In these cases, ANCAP considers technical evidence submitted by manufacturers before deciding on extending a rating to additional variants of a model. For further information about the application of ANCAP safety ratings to model variants, see the ANCAP Variant Policy.

^ The Rating Year denotes the year requirements against which a vehicle has been assessed. The Rating Year is determined by ANCAP and may be based on the year in which a new vehicle model is first launched into the Australian and/or New Zealand markets; the year in which the vehicle was tested (if tested by Euro NCAP); or, for vehicles which hold an existing ANCAP safety rating, the year in which the rating was updated (or earlier applicable year).

Assessment Details.

Tested Make / Model	Hyundai Tucson Active X 2WD
Tested Vehicle(s) Built	2015
Tested Body Type	Wagon
Tested Vehicle Kerb Weight	1530 kg
Tested Vehicle Engine	2.0 litre GDi petrol
Tested By	ANCAP
Assessed By	ANCAP
Document Reference	TUCSON15
Document created/revised	30/10/2015
Rating Published	November 2015
Rating updated	N/A

