

Crash Tests

New Car Safety

HONDA ODYSSEY

2006 on

Front + side & head airbags

Occupant Protection



Occupant Protection Score 27.50 out of 37

Variant: Luxury

Eng: 2.4 Automatic

Kerb weight: 1680 kg

Category: LARGE CAR/MPV

Vehicles built: 6/06

Model History and Safety Features

The tested model of Honda Odyssey was introduced in Australia during 2005.

Dual front airbags, side airbags and ABS/EBD brakes are standard equipment on both variants. Head-protecting side curtains are standard on the Luxury variant. Electronic stability control is not available.

The front seat belt buckles are mounted on the seats and the upper anchorages are adjustable. These features improve the fit of the seat belt. Pre-tensioners are fitted to the front seat belts to reduce slack in the event of a crash. A three point seat belt is fitted to the centre rear seat. This provides better protection than a two point seat belt.

OCCUPANT PROTECTION: 4 Stars

The Odyssey scored 11.5 out of 16 in the offset crash test. The passenger compartment held its shape well. Protection from serious leg injury was marginal for the driver. There was a slight risk of serious head and chest injury for the driver and a slight risk of serious chest and leg injury for the passenger.

The vehicle scored 16 out of 16 in the side impact crash test.

FRONTAL OFFSET CRASH TEST

Body region scores out of 4 points each: Head/neck 3.94 pts, chest 3.97 pts, upper legs 2 pts, lower legs 1.60 pts.

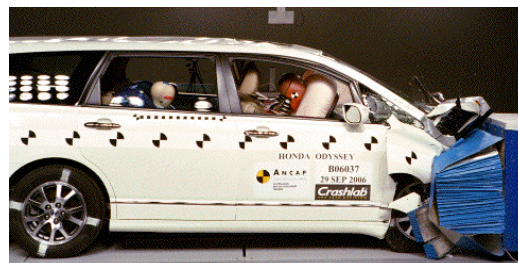
The passenger compartment held its shape well in the offset crash test. The park brake pedal moved rearwards by 116 mm and upwards 87 mm. The steering wheel hub moved rearwards 28 mm, upwards 73 mm and sideways 27 mm. The front ("A") pillar moved 19 mm rearwards. All doors remained closed during the crash. After the crash all doors opened with normal effort.

The airbag cushioned the head of the driver and contact was stable. Steering column components were a potential source of injury for the driver's knees. The passenger's head was cushioned by the airbag. Metal brackets at each end of the dash were potential sources of knee injury for both the driver and passenger.

SIDE IMPACT CRASH TEST

Body region scores out of 4 points each: Head 4 pts, chest 4 pts, abdomen 4 pts, pelvis 4 pts.

The vehicle was eligible for a pole test but the manufacturer decided not to go ahead with this test, which can earn a further two points.



Offset crash test at 64km/h

INJURY MEASUREMENTS

Refer to the information sheet "How the test are done"	Offset Crash Test at 64km/h (v4.1)		Side Impact Crash Test at 50km/h (v4.1)
	Driver	Passn	Driver
Head HIC	257	363	38
Acceleration (g for 3ms)	45.5	49.5	20.7
Neck - Shear (kN)	0.80	0.37	-
Tension (kN)	1.37	0.60	-
Extension (Nm)	29.7	16.6	-
Chest Accln (g for 3ms)	43.00	32.60	-
Compression (mm)	22.10	22.20	10.70
Viscous criterion (m/s)	0.08	0.08	0.04
Abdomen - Force (kN)	-	-	0.280
Pelvis - Force (kN)	-	-	1.860
Upper legs Force (kN)	Left: 1.16 Right: 0.20	0.04 3.23	
Knee displ (mm)	Left: 0.04 Right: 0.35	1.87 6.58	
Lower legs Force (kN)	Left: 4.14 Right: 1.41	2.27 0.90	
Index (Upper/Low)	Left: 0.71 / 0.20 Right: 0.26 / 0.73	0.32 / 0.12 0.36 / 0.19	

Bonus points (maximum 5)

Pole Test: Not tested Seat belt reminders: None

Modifiers - offset test scores

Head Str col upwards movement 0.06 pt deduction
 Chest No deduction
 Upper leg Variable & conc. loading 2 pt deduction L Drv
 conc. loading 1 pt R Drv & L Passn
 Lower leg Park brake upward 0.94 pt deduction
 Foot score Park brake rearward Score 3.38 points

Modifiers - side impact test scores

Chest No deduction

PEDESTRIAN PROTECTION RATING (v4.1)

Child head impacts	7.05	Upper leg impacts	Zero
Adult head impacts	5.00	Lower leg impacts	6.00
Total (out of 36)	18.05	★ ★ ☆ ☆	



ANCAP

Crash testing for safety

AUSTRALASIAN
NEW CAR ASSESSMENT
PROGRAM

November 2006

PO Box 1555
 Canberra ACT
 Australia 2601
 odyssey06.doc
 Issued 21/11/06