

Crash Test Results

New Car Safety

HONDA LEGEND (LHD)

2006 on

Front+side+head airbags



Offset crash test at 64km/h

FRONTAL OFFSET CRASH TEST (v4.1)

Body region scores out of 4 points each: Head/neck 4 pts, chest 4 pts, upper legs 2 pts, lower legs 3.2 pts.

The passenger compartment held its shape well in the offset crash test. The brake pedal moved rearwards by 98 mm and upwards 17 mm. The steering wheel hub moved forwards 6mm, downwards 25mm and sideways 5 mm. The front ("A") pillar moved 14 mm rearwards. All doors remained closed during the crash. After the crash high effort was required to open the driver's door.

The airbag cushioned the head of the driver and contact was stable. Steering column components were a potential source of injury for the driver's knees. The passenger's head was cushioned by the airbag. Glove box components were a potential source of knee injury for the passenger.

SIDE IMPACT CRASH TEST (v4.1)

Body region scores out of 4 points each: Head 4 pts, chest 4 pts, abdomen 4 pts, pelvis 4 pts. Door modifier 1 pt.

The vehicle was eligible for an optional pole impact test, since it had head-protecting side airbags and scored four points for the head in the side impact test. The manufacturer decided to go ahead with the pole test and the vehicle earned a further two points.

PEDESTRIAN PROTECTION RATING (v4.1)

PEDESTRIAN PROTECTION		
	Child head impacts	8.43
	Adult head impacts	4.24
	Upper leg impacts	2.86
	Lower leg impacts	6
	Total (out of 36)	21.53



Occupant Protection Score 33.20 out of 37

Variant: LHD

Eng: 3.5 litre V6

Kerb weight: 1870 kg

Category: LUXURY

Vehicles built: 2007

Important note: The *left-hand-drive* European model was tested by Euro NCAP. Australasian specifications may vary and therefore models sold in Australasia might provide different levels of protection to those described on this page.

Model History and Safety Features

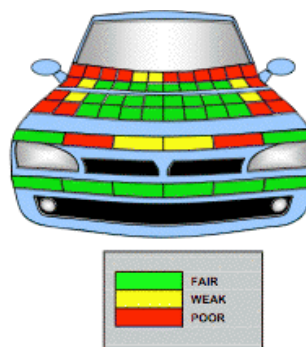
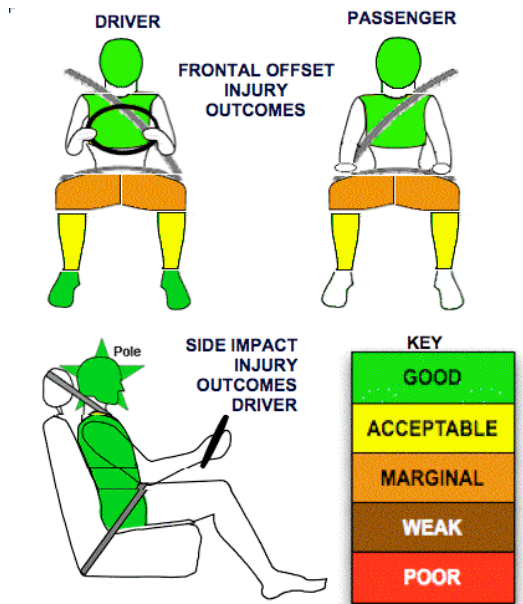
The tested model of Honda Legend was introduced in Australia and New Zealand during 2006.

Dual front airbags, side airbags and head-protecting side curtains are standard equipment. Antilock brakes (ABS), electronic brake distribution (EBD) and electronic stability control (ESC) are also standard. Intelligent seat belt reminders are fitted to all seats.

The front seat belt buckles are mounted on the seats and the upper anchorages are adjustable. These features improve the fit of the seat belt. Pre-tensioners are fitted to the front seat belts to reduce slack in the event of a crash. A three point seat belt is fitted to the centre rear seat. This provides better protection than a two point (lap) seat belt.

OCCUPANT PROTECTION: 5 Stars

The Honda Legend scored 13.2 out of 16 in the offset crash test. The passenger compartment held its shape well. Protection from serious leg injury was marginal for the driver. The vehicle scored 15 out of 16 in the side impact crash test. A door opened during the crash. Two points were earned in the optional pole.



June 2007

PO Box 1555

Canberra ACT

Australia 2601

LEGEND07.DOC

Issued 9/6/07



ANCAP

Crash testing for safety

AUSTRALASIAN
NEW CAR ASSESSMENT

www.ancap.com.au

TECHNICAL DATA - HONDA LEGEND(LHD) - 2007 on

INJURY MEASUREMENTS

Body region	Offset Crash Test at 64km/h (v4.1)		Side Impact Crash Test at 50km/h (v4.1)
	Driver	Passenger	Driver
Head HIC	171	434	21
Acceleration (g for 3ms)	34.2	56.8	17.5
Neck - Shear (kN)	0.37	0.52	-
Tension (kN)	0.94	0.65	-
Extension (Nm)	10.2	9.7	-
Chest Accln (g for 3ms)	-	-	-
Compression (mm)	20.94	18.07	17.72
Viscous criterion (m/s)	0.07	0.04	0.15
Abdomen - Force (kN)	-	-	0.880
Pelvis - Force (kN)	-	-	1.710
Upper legs Force			
Left (kN)	0.49	2.29	
Right (kN)	1.05	0.24	
Knee displ (mm)			
Left	2.10	0.00	
Right	0.20	0.00	
Lower legs Force			
Left (kN)	1.27	1.88	
Right (kN)	2.52	1.62	
Index (Upper/Low)			
Left	0.36 /0.41	0.58 /0.51	
Right	0.53 /0.33	0.47/0.4	

Bonus points (maximum 5)

Pole Test: 2. pts

Seat belt reminders: 3 (see table below for details)

Modifiers - deductions from offset test scores

Head No deduction

Chest No deduction

Upper leg Variable & conc. loading 2 pt deduction Left & Right for driver and passenger

Lower leg No deduction

Foot score Score 4 points

Note: Steering column and pedal movements are measured relative to the driver's seat.



Modifiers - deductions from side impact test scores

Chest No deduction

Door opened during crash 1 pt deduction

Safety features

These specifications are subject to change. Please check with manufacturer for the latest specifications.

Driver airbag	S	Antilock (ABS) brakes / Electronic brake distribution	S/S
Passenger front airbag	S	Electronic stability control (ESC, VSC, DSC, ESP, VSA)	S
Side airbags, front seats - chest protection	S	3 point centre rear seat belt	S
Side airbags, front seats - head protection	S	Active head restraints - front seats	
Side airbags, rear seats - head protection	S	Intelligent seat belt reminder - driver	S
Driver knee airbag	X	Intelligent seat belt reminder - front passenger	S
Front seat belt pretensioners	S	Rear seat belt status indicator	S

Key:

S = standard on all variants

O = optional on base variant. May be standard on higher variants

V= not available on base variant but standard or optional on higher variants

X = not available on any variant