

# Crash Test Results

## New Car Safety

### HONDA JAZZ

Sep 2008 on

Dual front airbags



**ANCAP** Occupant Protection  
Rated ★★★★★

**Occupant Protection Score 28.98 out of 37**

Variant: GLi 5 door hatch Eng: 1.3 litre

Kerb weight: 1070 kg Category: LIGHT CAR

Vehicles built: 8/08

#### Model History and Safety Features

The tested model of Honda Jazz was introduced in Australia during 2008.

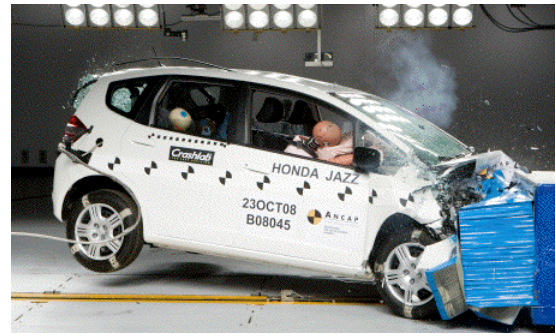
Dual front airbags are standard equipment. Antilock brakes (ABS) are also standard. Side airbags and head-protecting side curtains are optional on the GLi and standard on other variants. Electronic stability control (ESC) is not available. An advanced seat belt reminders is fitted to the driver seat of all variants. Front passenger and rear seat belt reminders are optional on the GLi and standard on other variants.

The front seat belt buckles are mounted on the seats and the upper anchorages are adjustable. These features improve the fit of the seat belt. Pretensioners are fitted to the front seat belts to reduce slack in the event of a crash. A three point seat belt is fitted to the centre rear seat. This provides better protection than a two point (lap) seat belt.

#### OCCUPANT PROTECTION: 4 Stars

The Jazz scored 14.42 out of 16 in the offset crash test. The passenger compartment held its shape well. There was a slight risk of serious chest and leg injury for the driver.

The vehicle scored 13.56 out of 16 in the side impact crash test. There was a moderate risk of serious chest injury for the driver.



Offset crash test at 64km/h

#### FRONTAL OFFSET CRASH TEST (v4.1)

Body region scores out of 4 points each: Head/neck 3 pts, chest 3.64 pts, upper legs 4 pts, lower legs 3.78 pts.

The passenger compartment held its shape well in the offset crash test. The clutch pedal moved rearwards by 80 mm and upwards 31 mm. The steering wheel hub moved 57mm forward, 1mm downward and 3 mm sideways. The front ("A") pillar moved 12 mm rearwards. All doors remained closed during the crash. After the crash all doors opened with normal effort.

The airbag cushioned the head of the driver but contact was unstable, with the head rolling to the side. There were no knee hazards. The passenger's head was cushioned by the airbag.

#### SIDE IMPACT CRASH TEST (v4.1)

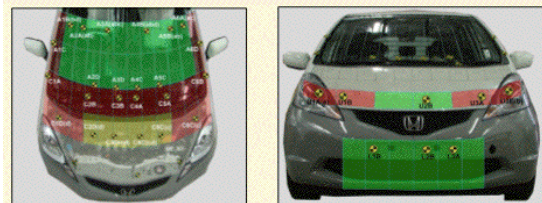
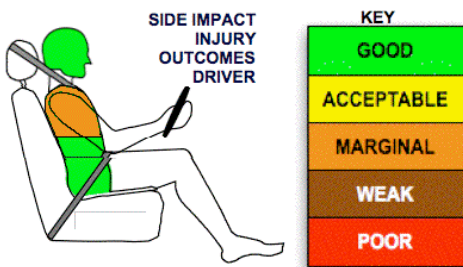
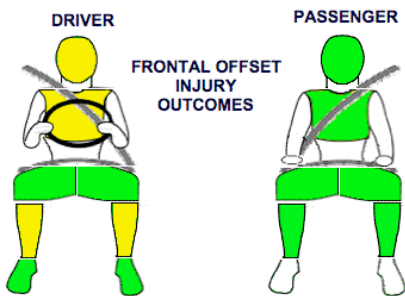
Body region scores out of 4 points each: Head 4 pts, chest 1.56 pts, abdomen 4 pts, pelvis 4 pts.

The vehicle was not eligible for a Pole Impact Test since it did not have head-protecting side airbags. This test can earn eligible vehicles an extra two points.

#### PEDESTRIAN PROTECTION: 3 Stars

The windscreen area provided reasonable protection for the adult head, and the bumper area scored well for the full leg assessment. Further improvement is needed for the child head test area, particularly the base of the windscreen. Some improvement could also be made to the upper leg test area.

PEDESTRIAN PROTECTION		
 v4.1 Rated ★★☆☆	Child head impacts	2.57
	Adult head impacts	10
	Upper leg impacts	2
	Lower leg impacts	6
	Total (out of 36)	20.57



Child and adult head impact

Adult leg impact (upper and full legforms)

fair marginal poor

December 2008

PO Box 4041

Manuka ACT 2603

jazz08.doc

Issued 28/11/08



**ANCAP**

Crash testing for safety

AUSTRALASIAN  
NEW CAR ASSESSMENT  
PROGRAM

# TECHNICAL DATA - HONDA JAZZ GLi - Sep 2008 on

## INJURY MEASUREMENTS

Body region	Offset Crash Test at 64km/h (v4.1)		Side Impact Crash Test at 50km/h (v4.1)
	Driver	Passenger	Driver
<b>Head HIC</b>	313	387	67
Acceleration (g for 3ms)	51.0	55.4	27.7
<b>Neck - Shear (kN)</b>	0.60	0.62	-
Tension (kN)	1.43	1.34	-
Extension (Nm)	16.1	19.9	-
<b>Chest Accln (g for 3ms)</b>	47.900	35.200	-
Compression (mm)	24.50	20.60	27.20
Viscous criterion (m/s)	0.09	0.07	0.33
<b>Abdomen - Force (kN)</b>	-	-	0.739
<b>Pelvis - Force (kN)</b>	-	-	2.240
<b>Upper legs Force (kN)</b>			
Left	1.09	0.65	
Right	2.30	1.82	
<b>Knee displ (mm)</b>			
Left	0.17	0.92	
Right	0.00	3.55	
<b>Lower legs Force (kN)</b>			
Left	1.39	1.63	
Right	1.82	1.16	
<b>Index (Upper/Low)</b>			
Left	0.41 /0.31	0.28 /0.19	
Right	0.45 /0.28	0.2/0.15	

### Bonus points (maximum 5)

Pole Test: Not eligible

Seat belt reminders: 1 (see table below for details)

### Modifiers - deductions from offset test scores

Head	No deduction
Chest	No deduction
Upper leg Variable & conc. loading	No deduction
Lower leg	No deduction
Foot score	Score 4 points

Note: Steering column and pedal movements are measured relative to the driver's seat.

### Modifiers - deductions from side impact test scores

Chest T12 loading	1.4 pt deduction
-------------------	------------------

### Safety features

These specifications are subject to change. Please check with manufacturer for the latest specifications.



Driver airbag	S	Antilock (ABS) brakes / Electronic brake distribution / Brake Assist	S/X/X
Passenger front airbag	S	Electronic stability control (ESC, VSC, DSC, ESP, VSA)	X#
Side airbags, front seats - chest protection	O	3 point centre rear seat belt	S
Side airbags, front seats - head protection	O	Active head restraints - front seats	X
Side airbags, rear seats - head protection	O	Intelligent seat belt reminder - driver	S
Driver knee airbag	X	Intelligent seat belt reminder - front passenger	O
Seat belt pretensioners (Front/rear outboard)	S/X	Rear seat belt status indicator	O

Key:

S = standard on all variants

O = optional on base variant. May be standard on higher variants

V= not available on base variant but standard or optional on higher variants

X = not available on any variant

# ESC required by ANCAP for 5 star rating from 2008