

Crash Test Results

New Car Safety

HONDA CR-Z

From 2011

Front+side+head airbags



ANCAP
Rated ★★★★★

Occupant Protection

Occupant Protection Score 35.56 out of 37

Variant: - Eng: 1.5 petrol/electric
Kerb mass 1230 kg Category: CAR - SPORTS
Vehicles built: 2010 Tested by Euro NCAP

Important note: The *left-hand-drive* European model was tested by Euro NCAP. Australasian specifications may vary and therefore models sold in Australasia might provide different levels of protection to those described on this page.

Model History and Safety Features

The tested model of Honda CR-Z was introduced in Australia and New Zealand during 2011.

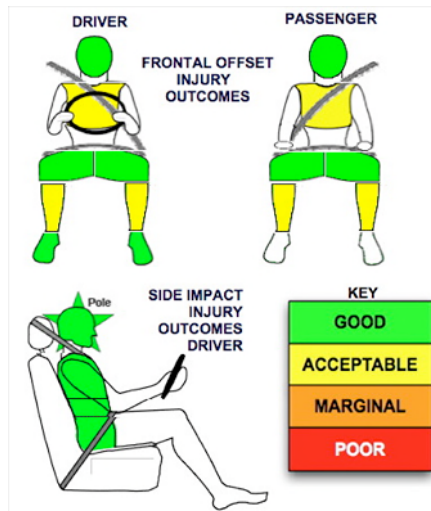
Dual front airbags, side airbags and head-protecting side curtains are standard equipment. Antilock brakes (ABS), electronic brakeforce distribution (EBD) and electronic stability control (ESC) are also standard. Intelligent seat belt reminders are fitted all four seats.

Pretensioners are fitted to the front seat belts to reduce slack in the event of a crash.

OCCUPANT PROTECTION: 5 Stars

The CR-Z scored 14.56 out of 16 in the offset crash test. The passenger compartment held its shape well. There was a slight risk of serious chest and leg injury for the driver and passenger.

The vehicle scored 16 out of 16 in the side impact crash test and a further two points in the pole test.



Offset crash test at 64km/h

FRONTAL OFFSET CRASH TEST

Body region scores out of 4 points each: Head/neck 4 pts, chest 3.13 pts, upper legs 4 pts, lower legs 3.43 pts.

The passenger compartment held its shape well in the offset crash test. The brake pedal moved rearwards by 35 mm and upwards 22 mm. The steering wheel hub moved 43mm forward, 12mm downward and 3 mm sideways. The front ("A") pillar moved 2 mm rearwards. All doors remained closed during the crash. After the crash all doors could be opened with normal effort.

The airbag cushioned the head of the driver and contact was stable. There were no knee hazards. The passenger's head was cushioned by the airbag.

SIDE IMPACT CRASH TEST

Body region scores out of 4 points each: Head 4 pts, chest 4 pts, abdomen 4 pts, pelvis 4 pts.

The vehicle was eligible for an optional pole impact test, since it had head-protecting side airbags. The CR-Z earned the maximum two points in this test.

PEDESTRIAN PROTECTION: ACCEPTABLE

Most of the bumper provided good protection along with the whole of the bonnet front edge. The area of the bonnet where a child or small adult's head would impact was good, but the area for adults offered various levels of protection.

PEDESTRIAN PROTECTION	Child head impacts	8
ACCEPTABLE	Adult head impacts	7.46
	Upper leg impacts	6
	Lower leg impacts	4
	Total (out of 36)	25.46

Tested by Euro NCAP v5



NOVEMBER 2011

PO Box 4041
Manuka ACT 2603
crz11.doc
Issued 18/10/2011



ANCAP
Crash testing for safety
AUSTRALASIAN
NEW CAR ASSESSMENT
PROGRAM

TECHNICAL DATA - HONDA CR-Z - From 2011

INJURY MEASUREMENTS

Body region	Offset Crash Test at 64km/h (v5)		Side Impact Crash Test at 50km/h (v5)
	Driver	Passenger	Driver
Head HIC	492	431	68
Acceleration (g for 3ms)	51.4	53.8	25.9
Neck - Shear (kN)	0.52	0.39	-
Tension (kN)	0.88	0.75	-
Extension (Nm)	10.0	9.4	-
Chest Accln (g for 3ms)	-	-	-
Compression (mm)	26.33	28.07	16.18
Viscous criterion (m/s)	0.08	0.13	0.07
Abdomen - Force (kN)	-	-	0.750
Pelvis - Force (kN)	-	-	2.910
Upper legs Force (kN)			
Left	1.25	0.90	
Right	1.01	0.30	
Knee displ (mm)			
Left	0.00	3.10	
Right	0.30	0.80	
Lower legs Force (kN)			
Left	2.58	2.67	
Right	2.86	2.25	
Index (Upper/Low)			
Left	0.44 /0.38	0.35 /0.24	
Right	0.49 /0.31	0.35/0.17	

Bonus points (maximum 5)

Pole Test: 2 pts

Seat belt reminders: 3 (see table below for details)

Modifiers - deductions from offset test scores

Head	No deduction
Chest	No deduction
Upper leg	No deduction
Lower leg	No deduction
Foot score	Score 4 points

Modifiers - deductions from side impact test scores

Chest	No deduction
-------	--------------

Safety features

These specifications are subject to change. Please check with manufacturer for the latest specifications.



Driver airbag	S	Antilock (ABS) brakes / Electronic brake distribution / Brake Assist	S/S/S
Passenger front airbag	S	Electronic stability control (ESC, VSC, DSC, ESP, VSA)	S#
Side airbags, front seats - chest protection	S	3 point seat belt for all forward-facing seats	S
Side airbags, front seats - head protection	S	Whiplash protection (RCAR protocol)	Pending
Side airbags, rear seats - head protection	S	Intelligent seat belt reminder - driver	S
Driver knee airbag	X	Intelligent seat belt reminder - front passenger	S
Seat belt pretensioners (Front/Rear outboard)	S/X	Intelligent seat belt reminder - rear seats	S

Key:

S = standard on all variants

O = optional on base variant. May be standard on higher variants

V= not available on base variant but standard or optional on higher variants

X = not available on any variant

ESC required by ANCAP for 5 star rating from 2008