

Crash Test Results

New Car Safety

HONDA CR-V

2007 on

Front+side+head airbags*



Offset crash test at 64km/h

FRONTAL OFFSET CRASH TEST (v4.1)

Body region scores out of 4 points each: Head/neck 4 pts, chest 3.23 pts, upper legs 2 pts, lower legs 3.02 pts.

The passenger compartment held its shape well in the offset crash test. The brake pedal moved rearwards by 46 mm. The clutch pedal moved upwards 12 mm. The steering wheel hub moved forwards 15mm, downwards 9mm and sideways 2 mm. The front ("A") pillar moved 1 mm rearwards. All doors remained closed during the crash. After the crash all doors opened with normal effort.


The airbag cushioned the head of the driver and contact was stable. Steering column and dash components were a potential source of injury for the driver's knees. The passenger's head was cushioned by the airbag. Glove box and dash components were a potential source of knee injury for the passenger.

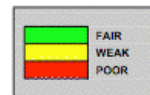
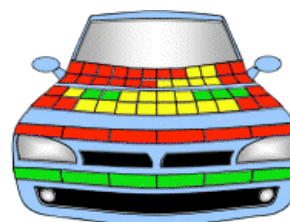
SIDE IMPACT CRASH TEST (v4.1)

Body region scores out of 4 points each: Head 4 pts, chest 4 pts, abdomen 4 pts, pelvis 4 pts.

The vehicle was eligible for an optional pole impact test, since it had head-protecting side airbags and scored four points for the head in the side impact test. The manufacturer decided to go ahead with the pole test and the vehicle earned a further two points.

PEDESTRIAN PROTECTION RATING (v4.1)

PEDESTRIAN PROTECTION		
 ANCAP Rated ★ ★ ★ ★	Child head impacts	5.35
	Adult head impacts	1.51
	Upper leg impacts	Zero
	Lower leg impacts	6
	Total (out of 36)	12.86




ANCAP Occupant Protection
 Rated ★ ★ ★ ★ ★

Occupant Protection Score 31.25 out of 37

* Safety equipment, as tested, not standard on all variants

Variant: Sport

Eng: 2.2 litre diesel

Kerb weight: 1670 kg

Category: 4WD - Compact

Vehicles built: 2007

Important note: The *diesel* right-hand-drive European model *with side curtains* was tested by Euro NCAP. Australasian specifications may vary and therefore models sold in Australasia might provide different levels of protection to those described on this page.

Model History and Safety Features

The tested model of Honda CR-V was introduced in Australia during 2007.

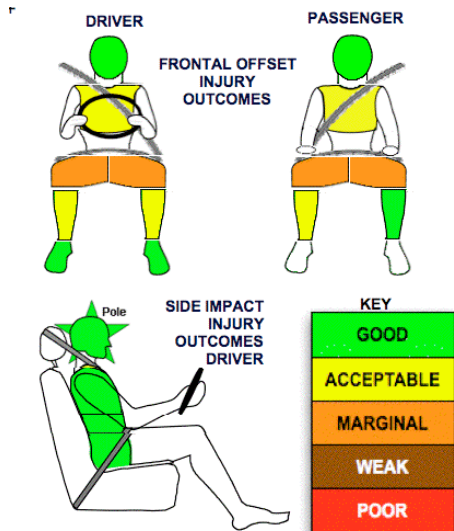
Dual front airbags, side airbags with chest protection, antilock brakes (ABS), electronic brake distribution (EBD) and electronic stability control (ESC) are standard. Head-protecting side curtains are standard on the Sports and Luxury variants but are not available on the base variant in Australia. They are standard on all New Zealand variants. An intelligent seat belt reminder is fitted to the driver seat in Australia but is on all seats in Europe.

The front seat belt buckles are mounted on the seats and the upper anchorages are adjustable. These features improve the fit of the seat belt. Pretensioners are fitted to the front seat belts to reduce slack in the event of a crash. A three point seat belt is fitted to the centre rear seat. This provides better protection than a two point (lap) seat belt.

OCCUPANT PROTECTION: 4 Stars

The Honda CR-V scored 12.25 out of 16 in the offset crash test. The passenger compartment held its shape well. Protection from serious leg injury was marginal for the driver.

The vehicle scored 16 out of 16 in the side impact crash test and a further 2 points in the optional pole test.



November 2007

PO Box 1555
 Canberra ACT
 Australia 2601
 CRV07.DOC
 Issued 9/11/07



ANCAP

Crash testing for safety

AUSTRALASIAN
NEW CAR ASSESSMENT
PROGRAM

TECHNICAL DATA - HONDA CR-V (curtains) - 2007 on

INJURY MEASUREMENTS

Body region	Offset Crash Test at 64km/h (v4.1)		Side Impact Crash Test at 50km/h (v4.1)
	Driver	Passenger	Driver
Head HIC	456	313	43
Acceleration (g for 3ms)	60.1	49.2	21.6
Neck - Shear (kN)	0.59	0.54	-
Tension (kN)	1.11	0.73	-
Extension (Nm)	27.6	19.3	-
Chest Accln (g for 3ms)	-	-	-
Compression (mm)	27.41	24.26	21.31
Viscous criterion (m/s)	0.12	0.13	0.15
Abdomen - Force (kN)	-	-	0.560
Pelvis - Force (kN)	-	-	0.750
Upper legs Force			
Left (kN)	0.18	0.17	
Right (kN)	0.28	1.24	
Knee displ (mm)			
Left	1.40	0.20	
Right	0.20	2.80	
Lower legs Force			
Left (kN)	2.11	1.80	
Right (kN)	2.92	2.45	
Index (Upper/Low)			
Left	0.28 /0.15	0.29 /0.16	
Right	0.62 /0.44	0.42/0.59	

Bonus points (maximum 5)

Pole Test: 2 pts

Seat belt reminders: 1 (see table below for details)

Modifiers - deductions from offset test scores

Head	No deduction
Chest	No deduction
Upper leg Variable & conc. loading for driver and passenger	2 pt deduction Left & Right
Lower leg	No deduction
Foot score	Score 4 points



Modifiers - deductions from side impact test scores

Chest	No deduction
-------	--------------

Safety features

These specifications are subject to change. Please check with manufacturer for the latest specifications.

Driver airbag	S	Antilock (ABS) brakes / Electronic brake distribution	S/S
Passenger front airbag	S	Electronic stability control (ESC, VSC, DSC, ESP, VSA)	S
Side airbags, front seats - chest protection	S	3 point centre rear seat belt	S
Side airbags, front seats - head protection	V √ (NZ S)	Active head restraints - front seats	S
Side airbags, rear seats - head protection	V √ (NZ S)	Intelligent seat belt reminder - driver	S
Driver knee airbag	X	Intelligent seat belt reminder - front passenger	X*
Front seat belt pretensioners	S	Rear seat belt status indicator	X*

* Intelligent seat belt reminders standard on passenger and rear seats in Europe and earned two extra bonus points from Euro NCAP. The European rating was limited to 4 stars because the offset score did not reach the minimum requirement of 12.5 points.

Key: √ = Fitted to vehicle that was crash tested (where not standard)

S = standard on all variants

O = optional on base variant. May be standard on higher variants

V= not available on base variant but standard or optional on higher variants

X = not available on any variant