

Crash Test Results

New Car Safety

HONDA CIVIC HATCH

From 2012 Front+side+head airbags



Offset crash test at 64km/h



ANCAP

Rated ★★★★★

Occupant Protection

Occupant Protection Score 36.03 out of 37

Variant: LHD "Comfort" Eng: 1.8

Kerb mass 1290 kg Category: CAR - SMALL

Vehicles built: 2012 on Tested by Euro NCAP

Important note: The *left-hand-drive* European model was tested by Euro NCAP. Honda provided information which showed that Australasian models have the same safety specifications as the European model.

Model History and Safety Features

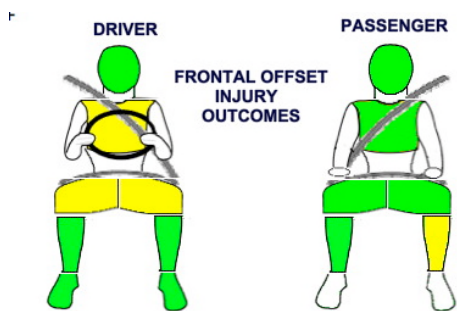
The tested model of the Civic Hatch was introduced in Australia during 2012. This ANCAP rating applies to all variants. A separate ANCAP rating is available for the Civic sedan.

Dual front airbags, side airbags and head-protecting side curtains are standard equipment. Antilock brakes (ABS), electronic brakeforce distribution (EBD) and electronic stability control (ESC) are also standard. Intelligent seat belt reminders are fitted to all seats.

OCCUPANT PROTECTION: 5 Stars

The Civic Hatch scored 15.03 out of 16 in the offset crash test. The passenger compartment held its structure well. There was a slight risk of serious chest and leg injury for the driver.

The vehicle scored 16 out of 16 in the side impact crash test and a further two points in the pole test.



FRONTAL OFFSET INJURY OUTCOMES

Whiplash Protection



SIDE IMPACT INJURY OUTCOMES DRIVER



FRONTAL OFFSET CRASH TEST

Body region scores out of 4 points each: Head/neck 4pts, chest 3.68 pts, upper legs 3.5 pts, lower legs 3.85 pts.

The passenger compartment held its shape well in the offset crash test. The brake pedal moved rearwards by 55 mm and upwards 26 mm. The steering wheel hub moved 24mm forward, 1mm downward and 2 mm sideways. The front ("A") pillar moved 16 mm rearwards. All doors remained closed during the crash. After the crash the driver's door could be opened with normal effort.

The airbag cushioned the head of the driver and contact was stable. Dash components were a potential source of injury for the driver's knees. The passenger's head was cushioned by the airbag.

SIDE IMPACT CRASH TEST

Body region scores out of 4 points each: Head 4pts, chest 4pts, abdomen 4pts, pelvis 4pts.

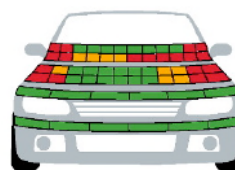
The vehicle was eligible for a pole impact test, since it had head-protecting side airbags. The vehicle earned the maximum two points in this test.

PEDESTRIAN PROTECTION: Acceptable

The bumper scored maximum points for the protection it offered to pedestrians' legs. The front edge of the bonnet provided good protection in all areas tested, and scored maximum points. Poor performance was seen in some of the tested areas but good protection was offered in many others, especially towards the center of the bonnet area.

PEDESTRIAN PROTECTION	Child head impacts	7.58
ACCEPTABLE	Adult head impacts	5.34
	Upper leg impacts	6.00
	Lower leg impacts	6.00
	Total (out of 36)	24.92

Tested by Euro NCAP v5.3



■ PASS
■ MARGINAL
■ FAIL

June 2012

PO Box 4041

Manuka ACT 2603

civic12hatch.doc Rated: 2012

Issued 30/05/2012



ANCAP

Crash testing for safety

AUSTRALASIAN
NEW CAR ASSESSMENT
PROGRAM

TECHNICAL DATA - HONDA CIVIC HATCH - From 2012

INJURY MEASUREMENTS

Body region	Offset Crash Test at 64km/h (v5.2)		Side Impact Crash Test at 50km/h (v5.2)
	Driver	Passenger	Driver
Head HIC	431	229	63
Acceleration (g for 3ms)	50.7	37.0	25.3
Neck - Shear (kN)	0.67	0.07	-
Tension (kN)	1.59	0.92	-
Extension (Nm)	16.5	13.7	-
Chest Accln (g for 3ms)	-	-	-
Compression (mm)	24.22	21.74	17.55
Viscous criterion (m/s)	0.09	0.06	0.07
Abdomen - Force (kN)	-	-	0.67
Pelvis - Force (kN)	-	-	1.40
Upper legs Force (kN)			
Left	3.27	1.00	
Right	0.26	0.40	
Knee displ (mm)			
Left	0.10	0.80	
Right	0.00	1.30	
Lower legs Force (kN)			
Left	1.35	2.23	
Right	1.85	1.74	
Index (Upper/Low)			
Left	0.33 /0.35	0.31 /0.21	
Right	0.37 /0.23	0.32/0.17	

Bonus points (maximum 5)

Pole Test: 2 pts

Seat belt reminders: 3 (see table below for details)

Modifiers - deductions from offset test scores

Head	No deduction
Chest	No deduction
Upper leg Variable loading	0.5 pt deduction Left & Right
Lower leg	No deduction
Foot score	No deduction

Modifiers - deductions from side impact test scores

Chest	No deduction
-------	--------------

Safety features

These specifications are subject to change. Please check with manufacturer for the latest specifications.



Driver airbag	S	Antilock (ABS) brakes / Electronic brake distribution / Brake Assist	S/S/S
Passenger front airbag	S	Electronic stability control (ESC, VSC, DSC, ESP, VSA)	S#
Side airbags, front seats - chest protection	S	3 point seat belt for all forward-facing seats	S
Side airbags, front seats - head protection	S	Whiplash protection (RCAR protocol)	Good
Side airbags, rear seats - head protection	S	Intelligent seat belt reminder - driver	S
Driver knee airbag	X	Intelligent seat belt reminder - front passenger	S
Seat belt pretensioners (Front/Rear outboard)	S/X	Intelligent seat belt reminder - rear seats	S

Key:

S = standard on all variants

O = optional on base variant. May be standard on higher variants

V= not available on base variant but standard or optional on higher variants

X = not available on any variant

ESC required by ANCAP for 5 star rating from 2008