

Crash Test Results

New Car Safety

HONDA CIVIC

2006 on

Dual front airbags



ANCAP Occupant Protection
Rated ★★★★★

Occupant Protection Score 28.90 out of 37

Variants: VTi sedan Eng: 1.8 litre auto
Kerb weight: 1210 kg Category: Small car
Vehicles built: 2006 and 2007

Model History and Safety Features

The tested model of Honda Civic was introduced in Australia during 2006.

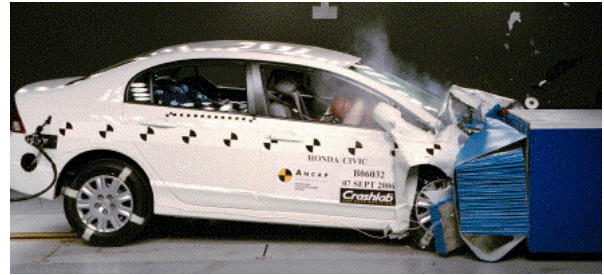
Dual front airbags and antilock brakes (ABS) with electronic brake distribution (EBD) are standard equipment. Side airbags, head-protecting side curtains and electronic stability control (ESC) are standard in New Zealand but are not available on all variants in Australia. An intelligent seat belt reminder is fitted to the driver seat.

The front seat belt buckles are mounted on the seats and the upper anchorages are adjustable. These features improve the fit of the seat belt. Pre-tensioners are fitted to the front seat belts to reduce slack in the event of a crash. A three point seat belt is fitted to the centre rear seat. This provides better protection than a two point (lap) seat belt.

OCCUPANT PROTECTION: 4 Stars

The Honda Civic scored 13.54 out of 16 in the offset crash test. The passenger compartment held its shape well. Protection from serious leg injury was marginal for the driver.

The vehicle scored 14.36 out of 16 in the side impact crash test. There was a moderate risk of serious chest injury for the driver.



Offset crash test at 64km/h

FRONTAL OFFSET CRASH TEST (v4.1)

Body region scores out of 4 points each: Head/neck 4 pts, chest 3.76 pts, upper legs 2 pts, lower legs 3.78 pts.

The passenger compartment held its shape well in the offset crash test. The park brake pedal moved rearwards by 77 mm and upwards 4 mm. The steering wheel hub moved rearwards 28 mm, upwards 33 mm and sideways 10 mm. The front ("A") pillar moved 11 mm rearwards. All doors remained closed during the crash. After the crash all doors could be opened with normal effort.

The airbag cushioned the head of the driver and contact was stable. Steering column components were a potential source of injury for the driver's knees. The passenger's head was cushioned by the airbag.

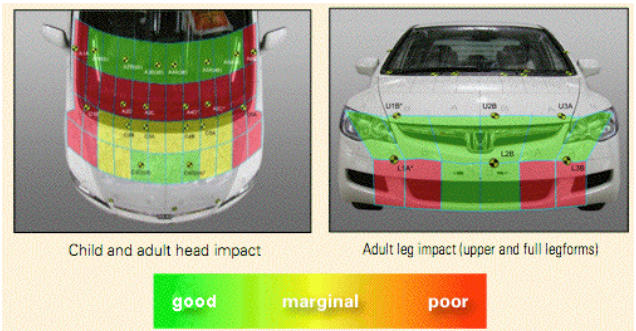
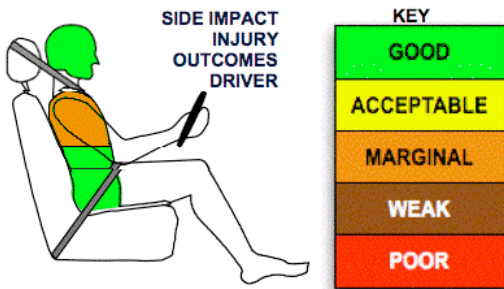
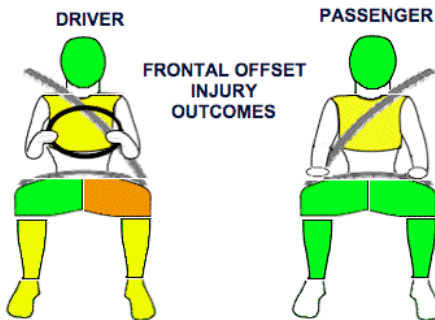
SIDE IMPACT CRASH TEST (v4.1)

Body region scores out of 4 points each: Head 4 pts, chest 2.36 pts, abdomen 4 pts, pelvis 4 pts.

The vehicle was not eligible for a Pole Impact Test since it did not have head-protecting side airbags. This test can earn eligible vehicles an extra two points.

PEDESTRIAN PROTECTION RATING (v4.1)

PEDESTRIAN PROTECTION	Child head impacts	5.69
 Rated ★★☆☆	Adult head impacts	6.32
	Upper leg impacts	6
	Lower leg impacts	2
	Total (out of 36)	19.32



August 2007

PO Box 1555
Canberra ACT
Australia 2601
civic06.doc
Issued 6/8/07



ANCAP
Crash testing for safety
AUSTRALASIAN
NEW CAR ASSESSMENT
PROGRAM

TECHNICAL DATA - HONDA CIVIC - 2006 on

INJURY MEASUREMENTS

Body region	Offset Crash Test at 64km/h (v4.1)		Side Impact Crash Test at 50km/h (v)
	Driver	Passenger	Driver
Head HIC	243	235	197
Acceleration (g for 3ms)	40.5	39.5	62.0
Neck - Shear (kN)	0.38	0.56	-
Tension (kN)	0.97	1.03	-
Extension (Nm)	20.8	8.2	-
Chest Accln (g for 3ms)	37.400	30.700	-
Compression (mm)	23.69	23.20	26.32
Viscous criterion (m/s)	0.08	0.07	0.35
Abdomen - Force (kN)	-	-	0.960
Pelvis - Force (kN)	-	-	1.870
Upper legs Force			
Left (kN)	0.41	0.10	
Right (kN)	0.29	0.91	
Knee displ (mm)			
Left	0.21	0.29	
Right	0.15	3.04	
Lower legs Force			
Left (kN)	1.89	1.76	
Right (kN)	1.96	1.46	
Index (Upper/Low)			
Left	0.45 /0.25	0.32 /0.12	
Right	0.44 /0.40	0.27/0.27	

Bonus points (maximum 5)

Pole Test: Not eligible due to a lack of head-protecting side airbags

Seat belt reminders: 1 (see table below for details)

Modifiers - deductions from offset test scores

Head No deduction
 Chest No deduction
 Upper leg Variable & conc. loading 2 pt deduction Left
 Lower leg No deduction
 Foot score Blocked pedal; Score 3.86 points

Note: Steering column and pedal movements are measured relative to the driver's seat.



Modifiers - deductions from side impact test scores

Chest Backplate load 0.773 pt deduction

Safety features

These specifications are subject to change. Please check with manufacturer for the latest specifications.

Driver airbag	S	Antilock (ABS) brakes / Electronic brake distribution	S/S
Passenger front airbag	S	Electronic stability control (ESC, VSC, DSC, ESP, VSA)	V (S NZ)
Side airbags, front seats - chest protection	V (S NZ)	3 point centre rear seat belt	S
Side airbags, front seats - head protection	V (S NZ)	Active head restraints - front seats	X
Side airbags, rear seats - head protection	V (S NZ)	Intelligent seat belt reminder - driver	S
Driver knee airbag	X	Intelligent seat belt reminder - front passenger	X
Front seat belt pretensioners	S	Rear seat belt status indicator	X

Key:

S = standard on all variants

O = optional on base variant. May be standard on higher variants

V= not available on base variant but standard or optional on higher variants

X = not available on any variant

NZ = New Zealand only