

# ANCAP Safety Rating HONDA CITY (From Jun 2014)



**ANCAP**

Safety ★★★★★



## Test Vehicle(s).

<b>Test Variant:</b>	VTi
<b>Kerb Mass:</b>	1110 kg
<b>Built:</b>	2014
<b>Engine:</b>	1.5 petrol
<b>Category:</b>	SMALL CAR
<b>Variant Applicability*:</b>	All variants



Frontal offset test at 64 km/h

Airbags	ESC	Frontal Offset	Side Impact	Pole	Whiplash	Pedestrian	Seat Belt Reminders	Overall Score	ANCAP Safety Rating
Frontal + Side + Head	Standard	14.62 (out of 16)	16.00 (out of 16)	2.00 (out of 2)	GOOD	ACCEPTABLE	3 (out of 3)	35.62 (out of 37)	★★★★★

The tested model of Honda City was introduced in Australia and New Zealand in June 2014. This ANCAP safety rating applies to all variants.

Dual frontal, side chest and side head airbags (curtains) are standard. Antilock brakes (ABS), electronic brake distribution (EBD) and electronic stability control (ESC) are also standard. Advanced seat belt reminders are fitted to all seats.

In the offset crash test driver chest and leg protection was acceptable. In the side impact crash test driver protection was good for all body regions. Head protection for the driver was also good in the side pole test.

## OCCUPANT PROTECTION

### Frontal Offset Test.

Each body region is scored out of 4 points

Head / neck:	4.00 points
Chest:	3.64 points
Upper legs:	4.00 points
Lower legs:	2.97 points

The passenger compartment held its shape well in the offset test. Pedal and steering wheel displacements were well controlled. Driver and passenger contact with the airbags was stable. All doors remained closed during the crash. After the crash all doors could be opened with normal effort.

### Side Impact Test.

Each body region is scored out of 4 points

Head:	4.00 points
Chest:	4.00 points
Abdomen:	4.00 points
Pelvis:	4.00 points

Good protection was provided for the driver in the side impact test. The side airbags performed well.

### Pole Test.

Scored out of 2 points

The vehicle was eligible for a side pole test because it has side curtain airbags. The vehicle scored the maximum 2 points for head protection in this test.

### Whiplash Protection Test.

Whiplash protection is assessed to the RCAR Protocol

Geometric test:	Good
Dynamic test:	Good
Overall whiplash rating:	Good

## Injury Outcomes.

Frontal Offset  
Driver



Passenger



Side Impact & Pole  
Driver



Whiplash



### PEDESTRIAN PROTECTION

#### Pedestrian Test.

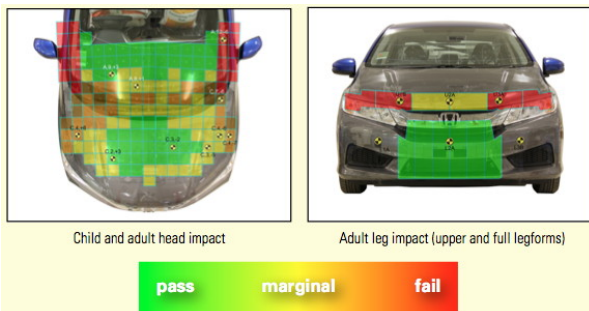
**ACCEPTABLE** - Scored 23.15 out of 36 points

- Child head impacts: 8.41 points
- Adult head impacts: 8.24 points
- Upper leg impacts: 0.50 points
- Lower leg impacts: 6.00 points

Points have been gained in the central area of the bonnet and windscreen. The bonnet and windscreen surrounds remain an area for further improvement. The bumper structure performed well. Improvements could be made to the location of the radiator support that would result in better performance for this vehicle (v6.0)



Honda City



### SAFETY FEATURES

These specifications are subject to change. Please check with manufacturer for the latest specifications. For a description of these safety features and safety rating requirements see the ANCAP Rating Road Map.

Safety Assist Technology (SAT)	Availability
Front airbag - driver	S
Front airbag - passenger	S
Side airbags (chest protection) - front seats	S
Side airbags (head protection) - front seats	S
Side airbags (head protection) - 2nd row seats	S
Knee airbag - driver	X
Three-point seat belts for all forward facing seats	S
Seat belt pretensioners (front / rear outboard)	S / X
Intelligent seat belt reminder - driver	S
Intelligent seat belt reminder - front passenger	S
Intelligent seat belt reminder - 2nd row seats	S
Head restraints for all seats	S
Antilock brakes (ABS)	S
Electronic brake distribution (EBD)	S
Emergency brake assist (EBA)	S
Electronic stability control (ESC)	S
Adaptive cruise control (ACC)	X
Autonomous emergency braking (AEB)	X
Lane support system	X
Emergency stop signal	S
Hill launch assist	S
Reversing collision avoidance	S

S = Standard on all variants.  
 O = Optional on base variant. May be standard on higher variants.  
 V = Not available on base variant but standard or optional on higher variants.  
 X = Not available on any variant.  
 E = Available in Europe but not available for any Australasian variant



## INJURY MEASUREMENTS

Body Region	Frontal offset test at 64 km/h (v5.1)		Side impact test at 50 km/h (v5.1)
	Driver	Passenger	Driver
<b>Head</b>			
HIC	547.00	264.00	55.00
Acceleration (g for 3ms)	63.20	44.80	20.90
<b>Neck</b>			
Shear (kN)	0.66	0.66	-
Tension (kN)	1.22	0.86	-
Extension (Nm)	13.40	19.00	-
<b>Chest</b>			
Acceleration (g for 3ms)	52.00	33.50	-
Compression (mm)	24.50	21.90	18.40
Viscous criterion (m/s)	0.10	0.07	0.12
<b>Abdomen</b>			
Force (kN)	-	-	0.68
<b>Pelvis</b>			
Force (kN)	-	-	2.06
<b>Upper legs</b>			
Femur force left (kN)	0.72	0.27	
Femur force right (kN)	2.09	0.96	
Knee displacement left (mm)	0.38	0.14	
Knee displacement right (mm)	0.09	1.03	
<b>Lower legs</b>			
Force left (kN)	3.54	1.42	
Force right (kN)	1.87	1.22	
Index (upper / lower) left	0.50 / 0.34	0.36 / 0.18	
Index (upper / lower) right	0.35 / 0.22	0.21 / 0.20	

## INTRUSION MEASUREMENTS

### Steering Column

Forwards:	49mm
Downwards:	20mm
Sideways:	0mm

### Pedals

Clutch (rearwards):	42mm
Clutch (upwards):	15mm

A-Pillar (rearwards):	9mm
-----------------------	-----

## SCORE DEDUCTIONS

### Deductions from frontal offset test scores

No deductions for offset test

Note: Steering column and pedal movements are measured relative to the driver's seat.

### Deductions from side impact test score

No deductions for side impact test.

### Deductions from pole test score

No deductions for pole test.

\* For information about the application of ANCAP ratings to model variants see the ANCAP Variant Policy. In brief, ratings do not automatically extend to variants that have different body styles, engine configurations, driven wheels or occupant restraint systems (e.g. fewer airbags). In these cases ANCAP considers technical evidence submitted by manufacturers before deciding on extending a rating to additional variants of a model.

^ Refer ANCAP Rating Road Map ([www.ancap.com.au/media](http://www.ancap.com.au/media)).

DOCUMENT REF: CITY14  
CREATED / REVISED: 2/10/2014

