

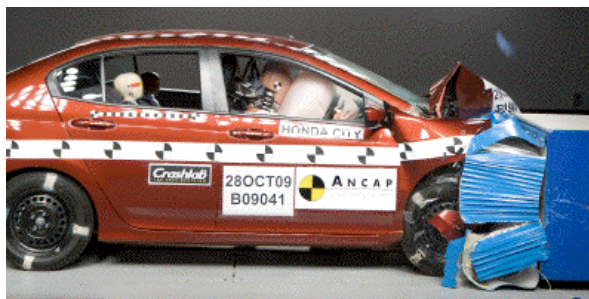
# Crash Test Results

## New Car Safety

### HONDA CITY

2009 on

Front+side+head airbags



Offset crash test at 64km/h

#### FRONTAL OFFSET CRASH TEST (v4.1)

Body region scores out of 4 points each: Head/neck 4 pts, chest 3.83 pts, upper legs 3 pts, lower legs 3.64 pts.

The passenger compartment held its shape well in the offset crash test. The clutch pedal moved rearwards by 109 mm and upwards 26 mm. The steering wheel hub moved 64 mm rearward, 18mm downward and 10 mm sideways. The front ("A") pillar moved 2 mm rearwards. All doors remained closed during the crash. After the crash all doors could be opened with normal effort.

The airbag cushioned the head of the driver and contact was stable. There were no knee hazards for the driver. The passenger's head was cushioned by the airbag. The edge of the centre console was a potential source of injury to the passenger's right knee.

#### SIDE IMPACT CRASH TEST (v4.1)

Body region scores out of 4 points each: Head 4 pts, chest 3.02 pts, abdomen 4 pts, pelvis 4 pts.

Although head-protecting side curtains are standard the City was not eligible for a pole impact test because it did not meet ANCAP's requirements for a 5-star rating. This test can earn an extra two points.

#### PEDESTRIAN PROTECTION: 3 Stars

There was mostly good protection for pedestrians. The sides of the bonnet were poor.

**Occupant Protection Score 31.49 out of 37**

Variant: VTi

Eng: 1.5 litre, 5 speed manual

Kerb weight: 1110 kg

Category: CAR - SMALL

Vehicles built: 2009

#### Model History and Safety Features

The tested model of Honda City was introduced in Australia during 2009.

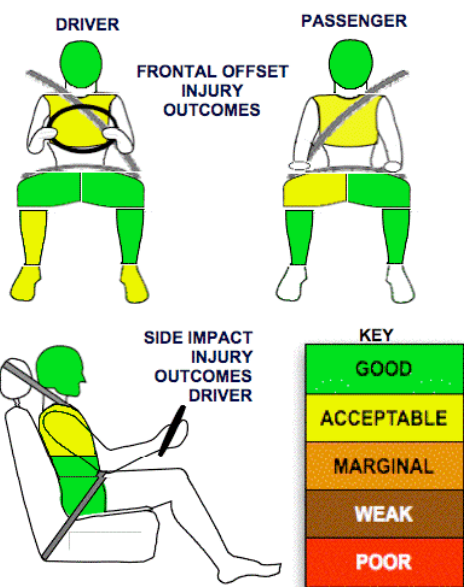
Dual front airbags, side airbags, head-protecting side curtains and antilock brakes (ABS) with electronic brake distribution (EBD) are standard equipment. Electronic stability control (ESC) is not available so the City is not eligible for 5 stars from ANCAP. Advanced seat belt reminders are fitted to both front seats.


Pretensioners are fitted to the front seat belts to reduce slack in the event of a crash. A three point seat belt is fitted to the centre rear seat. This provides better protection than a two point (lap) seat belt.

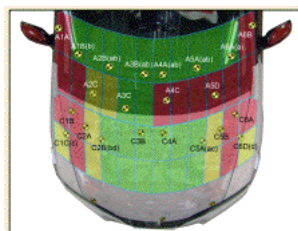
#### OCCUPANT PROTECTION: 4 Stars

The HONDA CITY scored 14.47 out of 16 in the offset crash test. The passenger compartment held its shape well. There was a slight risk of serious chest and leg injury for the driver and passenger.

The vehicle scored 15.02 out of 16 in the side impact crash test. There was a slight risk of serious chest injury for the driver.



PEDESTRIAN PROTECTION		
 Rated ★ ★ ★ ★	Child head impacts	7.63
	Adult head impacts	6.34
	Upper leg impacts	2
	Lower leg impacts	6
	Total (out of 36)	21.97



Child and adult head impact



Adult leg impact (upper and full legforms)

pass      marginal      fail

November 2009

PO Box 4041

Manuka ACT 2603

city09.doc

Issued 16/11/2009



# TECHNICAL DATA - HONDA CITY - 2009 on

## INJURY MEASUREMENTS

Body region	Offset Crash Test at 64km/h (v4.1)		Side Impact Crash Test at 50km/h (v4.1)
	Driver	Passenger	Driver
<b>Head HIC</b>	180	183	130
Acceleration (g for 3ms)	34.8	32.3	37.6
<b>Neck - Shear (kN)</b>	0.36	0.57	-
Tension (kN)	0.86	0.95	-
Extension (Nm)	18.2	12.6	-
<b>Chest Accln (g for 3ms)</b>	36.100	31.900	-
Compression (mm)	22.40	23.20	25.60
Viscous criterion (m/s)	0.07	0.08	0.22
<b>Abdomen - Force (kN)</b>	-	-	0.750
<b>Pelvis - Force (kN)</b>	-	-	2.550
<b>Upper legs Force (kN)</b>			
Left	0.66	0.18	
Right	2.25	1.27	
<b>Knee displ (mm)</b>			
Left	0.00	0.49	
Right	1.00	2.82	
<b>Lower legs Force (kN)</b>			
Left	1.40	1.62	
Right	2.05	1.18	
<b>Index (Upper/Low)</b>			
Left	0.26 /0.15	0.35 /0.13	
Right	0.40 /0.28	0.25/0.13	

### Bonus points (maximum 5)

Pole Test: Not eligible (no ESC)

Seat belt reminders: 2 (see table below for details)

### Modifiers - deductions from offset test scores

Head	No deduction
Chest	No deduction
Upper leg Conc. loading	1 pt deduction passn right
Lower leg	No deduction
Foot score	Score 4 points

Note: Steering column and pedal movements are measured relative to the driver's seat.

### Modifiers - deductions from side impact test scores

Chest Backplate load	0.26 pt deduction
----------------------	-------------------

### Safety features

These specifications are subject to change. Please check with manufacturer for the latest specifications.



Driver airbag	S	Antilock (ABS) brakes / Electronic brake distribution / Brake Assist	S/S/V*
Passenger front airbag	S	Electronic stability control (ESC, VSC, DSC, ESP, VSA)	X#
Side airbags, front seats - chest protection	S	3 point centre rear seat belt	S
Side airbags, front seats - head protection	S	Active head restraints - front seats	X
Side airbags, rear seats - head protection	S	Intelligent seat belt reminder - driver	S
Driver knee airbag	X	Intelligent seat belt reminder - front passenger	S
Seat belt pretensioners (Front/rear outboard)	S/X	Rear seat belt status indicator	X

Key: \* Emergency Brake Assist is standard in New Zealand but it not available in Australia

S = standard on all variants

O = optional on base variant. May be standard on higher variants

V= not available on base variant but standard or optional on higher variants

X = not available on any variant

# ESC required by ANCAP for 5 star rating from 2008



**ANCAP**

Crash testing for safety

AUSTRALASIAN  
NEW CAR ASSESSMENT  
PROGRAM