

ANCAP Safety Rating HONDA ACCORD (From August 2014)



ANCAP

Safety ★★★★★



Test Vehicle(s).

Test Variant:	2.4
Kerb Mass:	1580 kg
Built:	2014
Engine:	2.4 petrol
Category:	Medium Car
Variant Applicability*:	All variants



Frontal offset test at 64 km/h

Airbags	ESC	Frontal Offset	Side Impact	Pole	Whiplash	Pedestrian	Seat Belt Reminders	Overall Score	ANCAP Safety Rating
Frontal + Side + Head	Standard	14.79 (out of 16)	16.00 (out of 16)	2.000 (out of 2)	GOOD	ACCEPTABLE	3 (out of 3)	35.79 (out of 37)	★★★★★

The Honda Accord was introduced in Australia and New Zealand in 2013. This ANCAP 5 star safety rating applies to all variants built from August 2014.

Dual frontal, side chest and side head airbags (curtains) are standard. Antilock brakes (ABS), electronic brake distribution (EBD) and electronic stability control (ESC) are also standard. Autonomous emergency braking (AEB) is available for some variants. Advanced seat belt reminders are fitted to all seats.

In the offset crash test driver chest, leg and foot protection was acceptable. Passenger leg protection was also acceptable. In the side impact crash test driver protection for good. Head protection in the side pole test was good.

OCCUPANT PROTECTION

Frontal Offset Test.

Each body region is scored out of 4 points

Head / neck:	4.00 points
Chest:	3.65 points
Upper legs:	4.00 points
Lower legs:	3.14 points

The passenger compartment held its shape well in the offset crash test. Accelerator rearward movement was slightly excessive. All doors could be easily opened after the test.

Side Impact Test.

Each body region is scored out of 4 points

Head:	4.00 points
Chest:	4.00 points
Abdomen:	4.00 points
Pelvis:	4.00 points

Good protection was provided for the driver in the side impact test. The side airbags performed well.

Pole Test.

Scored out of 2 points

The vehicle was eligible for a side pole test because it has side curtain airbags. The vehicle scored the maximum 2 points for head protection in this test.

Whiplash Protection Test.

Whiplash protection is assessed to the RCAR Protocol

Geometric test:	Good
Dynamic test:	Good
Overall whiplash rating:	Good

Injury Outcomes.

Frontal Offset Driver



Passenger



Side Impact & Pole Driver



Whiplash



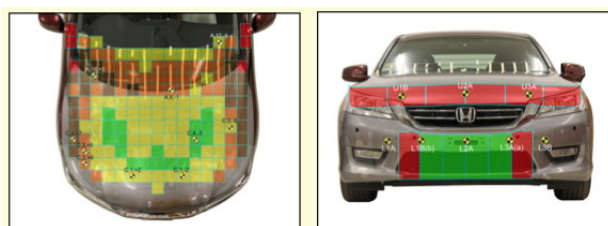
PEDESTRIAN PROTECTION

Pedestrian Test.

ACCEPTABLE - Scored 20.35 out of 36 points

Child head impacts: 8.82 points
 Adult head impacts: 7.52 points
 Upper leg impacts: 0.00 points
 Lower leg impacts: 4.00 points

The bonnet was mostly acceptable for head protection. The leading edge of the bonnet scored zero. The bumper had a mix of poor and good results (v5.3).



Honda Accord

SAFETY FEATURES

These specifications are subject to change. Please check with manufacturer for the latest specifications. For a description of these safety features and safety rating requirements see the ANCAP Rating Road Map.

Safety Assist Technology (SAT)	Availability
Front airbag - driver	S
Front airbag - passenger	S
Side airbags (chest protection) - front seats	S
Side airbags (head protection) - front seats	S
Side airbags (head protection) - 2nd row seats	S
Knee airbag - driver	X
Three-point seat belts for all forward facing seats	S
Seat belt pretensioners (front / rear outboard)	S / X
Intelligent seat belt reminder - driver	S
Intelligent seat belt reminder - front passenger	S
Intelligent seat belt reminder - 2nd row seats	S
Head restraints for all seats	S
Antilock brakes (ABS)	S
Electronic brake distribution (EBD)	S
Emergency brake assist (EBA)	S
Electronic stability control (ESC)	S
Adaptive cruise control (ACC)	V
Autonomous emergency braking (AEB)	V
Lane support system	V
Pre-crash systems	V
Adaptive front lighting systems	V
Automatic high beam	V
Automatic headlights	S
Daytime running lights	S
Emergency stop signal	S
Hill-launch assist	S
Reversing collision avoidance system	S
Trailer stability control	S
Tyre pressure monitoring	S

S = Standard on all variants.
 O = Optional on base variant. May be standard on higher variants.
 V = Not available on base variant but standard or optional on higher variants.
 X = Not available on any variant.
 E = Available in Europe but not available on any Australasian variant.



INJURY MEASUREMENTS

Body Region	Frontal offset test at 64 km/h (v5.1)		Side impact test at 50 km/h (v5.1)
	Driver	Passenger	Driver
Head			
HIC	479.00	358.00	51.00
Acceleration (g for 3ms)	60.10	46.70	22.40
Neck			
Shear (kN)	0.69	0.60	-
Tension (kN)	1.08	0.50	-
Extension (Nm)	25.90	8.70	-
Chest			
Acceleration (g for 3ms)	39.8	37.2	-
Compression (mm)	24.42	20.70	14.10
Viscous criterion (m/s)	0.10	0.11	0.05
Abdomen			
Force (kN)	-	-	0.85
Pelvis			
Force (kN)	-	-	1.72
Upper legs			
Femur force left (kN)	0.14	0.15	
Femur force right (kN)	0.28	1.84	
Knee displacement left (mm)	0.35	0.74	
Knee displacement right (mm)	0.46	2.45	
Lower legs			
Force left (kN)	1.52	2.33	
Force right (kN)	1.67	2.53	
Index (upper / lower) left	0.47 / 0.38	0.32 / 0.14	
Index (upper / lower) right	0.47 / 0.39	0.39 / 0.25	

INTRUSION MEASUREMENTS

Steering Column

Forwards:	4mm
Upwards:	19mm
Sideways:	9mm

Pedals

Accelerator (rearwards):	115mm
Brake (upwards):	57mm

A-Pillar (rearwards):	11mm
-----------------------	------

SCORE DEDUCTIONS

Deductions from frontal offset test scores

Excessive accelerator pedal rearward movement (115mm): 0.58 points from foot score

Blocked brake pedal: 0.28 points from foot score

Note: Steering column and pedal movements are measured relative to the driver's seat.

Deductions from side impact test score

No deductions for side impact test.

Deductions from pole test score

No deductions for pole test.

* For information about the application of ANCAP ratings to model variants see the ANCAP Variant Policy. In brief, ratings do not automatically extend to variants that have different body styles, engine configurations, driven wheels or occupant restraint systems (e.g. fewer airbags). In these cases ANCAP considers technical evidence submitted by manufacturers before deciding on extending a rating to additional variants of a model.

^ Refer ANCAP Rating Road Map (www.ancap.com.au/media).

DOCUMENT REF: ACCORD14
 CREATED / REVISED: 11/10/2014

