

# Crash Test Results

## New Car Safety

### HONDA INSIGHT

2010 on

Front+side+head airbags



Offset crash test at 64km/h

#### FRONTAL OFFSET CRASH TEST

Body region scores out of 4 points each: Head/neck 4 pts, chest 4 pts, upper legs 4 pts, lower legs 3.54 pts.

The passenger compartment held its shape well in the offset crash test. The accelerator pedal moved rearwards by 25 mm. The brake pedal moved upwards 19 mm. The steering wheel hub moved 72 mm forward, 10 mm downward and 7 mm sideways. The front ("A") pillar moved 3 mm rearwards. All doors remained closed during the crash. After the crash the driver's door could be opened with moderate manual effort.

The airbag cushioned the head of the driver and contact was stable. The passenger's head was cushioned by the airbag. The side curtain deployed.

#### SIDE IMPACT CRASH TEST

Body region scores out of 4 points each: Head 4 pts, chest 3.85 pts, abdomen 4 pts, pelvis 4 pts.

The vehicle was eligible for an optional pole impact test, since it had head-protecting side airbags. The manufacturer decided to go ahead with the pole test and the vehicle earned a further two points.

#### PEDESTRIAN PROTECTION: 3 Stars

#### Occupant Protection Score 36.39 out of 37

Variant: 5 dr hatch

Eng: 1.3 Hybrid

Kerb weight: 1240 kg

Category: CAR - SMALL

Vehicles built: 2009

Tested by Euro NCAP

**Important note:** The European model was tested by Euro NCAP. Australasian specifications may vary and therefore models sold in Australasia might provide different levels of protection to those described on this page.

#### Model History and Safety Features

The tested model of Honda Insight was introduced in Australia during 2010.


Dual front airbags, side airbags and head-protecting side curtains are standard equipment. Antilock brakes (ABS), electronic brakeforce distribution (EBD) and electronic stability control (ESC) are also standard. Intelligent seat belt reminders are fitted to all seats.

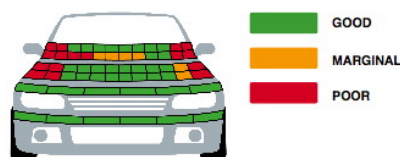
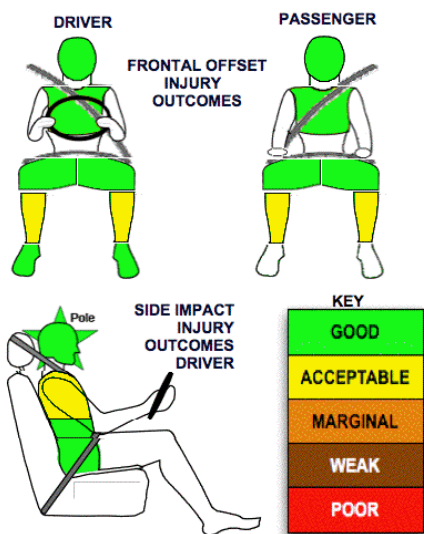
Pretensioners are fitted to the front seat belts to reduce slack in the event of a crash. A three point seat belt is fitted to the centre rear seat. This provides better protection than a two point (lap) seat belt.

#### OCCUPANT PROTECTION: 5 Stars

The Insight scored 15.54 out of 16 in the offset crash test. The passenger compartment held its shape well. There was a slight risk of serious leg injury for the driver and passenger.

The vehicle scored 15.85 out of 16 in the side impact crash test. There was a slight risk of serious chest injury for the driver. A further two points were scored in the optional pole test.

PEDESTRIAN PROTECTION		
 <b>ANCAP</b> Rated ★ ★ ★ ★ Tested by Euro NCAP 2009	Child head impacts	8.9
	Adult head impacts	6.47
	Upper leg impacts	6
	Lower leg impacts	6
	Total (out of 36)	27.37



October 2010

PO Box 4041

Manuka ACT 2603

Insight10.doc

Issued 24/9/2010



# TECHNICAL DATA - HONDA INSIGHT - 2010 on

## INJURY MEASUREMENTS

Body region	Offset Crash Test at 64km/h (v5)		Side Impact Crash Test at 50km/h (v5)
	Driver	Passenger	Driver
<b>Head HIC</b>	340	226	76
Acceleration (g for 3ms)	48.3	40.9	28.5
<b>Neck - Shear (kN)</b>	0.59	0.43	-
Tension (kN)	1.26	0.89	-
Extension (Nm)	7.4	21.9	-
<b>Chest Accln (g for 3ms)</b>	-	-	-
Compression (mm)	19.58	18.90	22.32
Viscous criterion (m/s)	0.07	0.08	0.13
<b>Abdomen - Force (kN)</b>	-	-	0.89
<b>Pelvis - Force (kN)</b>	-	-	2.42
<b>Upper legs Force (kN)</b>			
Left	1.52	0.40	
Right	1.65	0.60	
<b>Knee displ (mm)</b>			
Left	0.50	0.00	
Right	0.00	0.00	
<b>Lower legs Force (kN)</b>			
Left	2.69	2.28	
Right	2.08	2.19	
<b>Index (Upper/Low)</b>			
Left	0.33 /0.21	0.39 /0.21	
Right	0.40 /0.28	0.35/0.23	

### Bonus points (maximum 5)

Pole Test: 2 pts

Seat belt reminders: 3 (see table below for details)

### Modifiers - deductions from offset test scores

Head	No deduction
Chest	No deduction
Upper leg	No deduction
Lower leg	No deduction
Foot score	Score 4 points

### Modifiers - deductions from side impact test scores

Chest Back plate load	0.087pt deduction
-----------------------	-------------------

### Safety features

These specifications are subject to change. Please check with manufacturer for the latest specifications.

Driver airbag	S	Antilock (ABS) brakes / Electronic brake distribution / Brake Assist	S/S/X
Passenger front airbag	S	Electronic stability control (ESC, VSC, DSC, ESP, VSA)	S#
Side airbags, front seats - chest protection	S	3 point centre rear seat belt	S
Side airbags, front seats - head protection	S	Active head restraints - front seats	X
Side airbags, rear seats - head protection	S	Intelligent seat belt reminder - driver	S
Driver knee airbag	X	Intelligent seat belt reminder - front passenger	S
Seat belt pretensioners (Front/Rear outboard)	S/X	Intelligent seat belt reminder - rear seats	S

Key:

S = standard on all variants

O = optional on base variant. May be standard on higher variants

V= not available on base variant but standard or optional on higher variants

X = not available on any variant

# ESC required by ANCAP for 5 star rating from 2008

