

Crash Test Results

New Car Safety

HONDA CIVIC HYBRID

2007 on

Front+side+head airbags



Offset crash test at 64km/h



ANCAP Occupant Protection
Rated ★★★★★

Occupant Protection Score 29.71 out of 37

Variant: sedan

Eng: 1.3 litre Hybrid

Kerb weight: 1300 kg

Category: SMALL CAR

Vehicles built: 2007

Tested by Euro NCAP

Important note: The European model was tested by Euro NCAP. Australasian specifications may vary and therefore models sold in Australasia might provide different levels of protection to those described on this page.

Model History and Safety Features

The tested model of Honda Civic Hybrid was introduced in Australia during 2007.

Dual front airbags, side airbags and head-protecting side curtains are standard equipment. Antilock brakes (ABS) with electronic brake distribution (EBD) are also standard. Electronic stability control (ESC) is not available. An intelligent seat belt reminder is fitted to the driver seat.

The front seat belt buckles are mounted on the seats and the upper anchorages are adjustable. These features improve the fit of the seat belt. Pre-tensioners are fitted to the front seat belts to reduce slack in the event of a crash. A three point seat belt is fitted to the centre rear seat. This provides better protection than a two point (lap) seat belt.

OCCUPANT PROTECTION: 4 Stars

The Civic Hybrid scored 11.24 out of 16 in the offset crash test. The passenger compartment held its shape well. Protection from serious leg injury was marginal for the driver.

The vehicle scored 15.47 out of 16 in the side impact crash test. There was a slight risk of serious chest and abdomen injury for the driver. A further two points were earned in the optional pole test.

FRONTAL OFFSET CRASH TEST (v4.1)

Body region scores out of 4 points each: Head/neck 3 pts, chest 3.57 pts, upper legs 2 pts, lower legs 2.67 pts.

The passenger compartment held its shape well in the offset crash test. The brake pedal moved rearwards by 70 mm. The accelerator pedal moved downwards 14mm. The steering wheel hub moved forwards 13mm, upwards 24 mm and sideways 4 mm. The front ("A") pillar moved 9mm forwards. All doors remained closed during the crash. After the crash all doors opened with normal effort.


The airbag cushioned the head of the driver and contact was stable but the airbag bottomed out. Steering column and dash components were a potential source of injury for the driver's knees. The passenger's head was cushioned by the airbag. Dash components were a potential source of injury for the passenger's right knee.

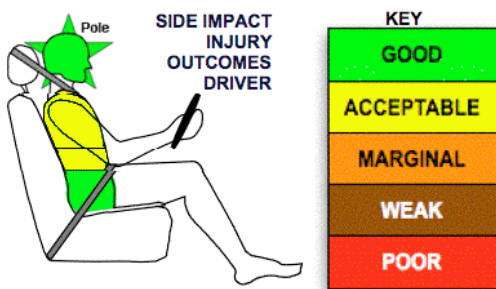
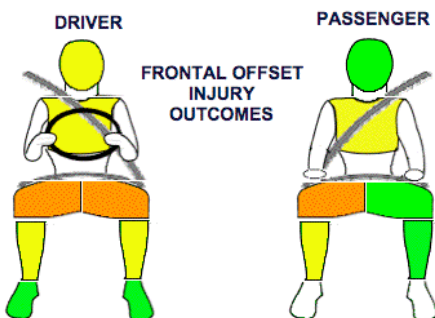
SIDE IMPACT CRASH TEST (v4.1)

Body region scores out of 4 points each: Head 4 pts, chest 3.58 pts, abdomen 3.89 pts, pelvis 4 pts.

The vehicle was eligible for an optional pole impact test, since it had head-protecting side airbags and scored four points for the head in the side impact test. The manufacturer decided to go ahead with the pole test and the vehicle earned a further two points.

PEDESTRIAN PROTECTION RATING (v4.1)

| PEDESTRIAN PROTECTION | | |
|--|--------------------|------|
|  ANCAP Rated ★★★★★ Tested by Euro NCAP | Child head impacts | 3.86 |
| | Adult head impacts | 5.04 |
| | Upper leg impacts | 6 |
| | Lower leg impacts | 6 |
| | Total (out of 36) | 20.9 |



GOOD
ADEQUATE
MARGINAL

August 2007

PO Box 1555

Canberra ACT

Australia 2601

CivicHybrid07.doc

Issued 6/8/07



ANCAP

Crash testing for safety

AUSTRALASIAN
NEW CAR ASSESSMENT
PROGRAM

www.ancap.com.au

TECHNICAL DATA - HONDA CIVIC HYBRID - 2007 on

INJURY MEASUREMENTS

| Body region | Offset Crash Test at 64km/h (v4.1) | | Side Impact Crash Test at 50km/h (v4.1) |
|--------------------------------|---------------------------------------|------------|---|
| | Driver | Passenger | Driver |
| Head HIC | 268 | 251 | 54 |
| Acceleration (g for 3ms) | 41.6 | 40.0 | 23.9 |
| Neck - Shear (kN) | 0.28 | 0.57 | - |
| Tension (kN) | 1.15 | 1.29 | - |
| Extension (Nm) | 35.7 | 12.7 | - |
| Chest Accln (g for 3ms) | - | - | - |
| Compression (mm) | 25.00 | 22.70 | 24.10 |
| Viscous criterion (m/s) | 0.12 | 0.08 | 0.17 |
| Abdomen - Force (kN) | - | - | 1.040 |
| Pelvis - Force (kN) | - | - | 1.960 |
| Upper legs Force | | | |
| Left (kN) | 0.85 | 0.27 | |
| Right (kN) | 0.00 | 0.66 | |
| Knee displ (mm) | | | |
| Left | 0.00 | 0.00 | |
| Right | 0.00 | 4.00 | |
| Lower legs Force | | | |
| Left (kN) | 2.62 | 1.60 | |
| Right (kN) | 1.59 | 2.19 | |
| Index (Upper/Low) | | | |
| Left | 0.70 /0.48 | 0.36 /0.15 | |
| Right | 0.41 /0.46 | 0.25/0.28 | |

Bonus points (maximum 5)

Pole Test: 2 pts

Seat belt reminders: 1 (see table below for details)

Modifiers - deductions from offset test scores

| | | |
|------------|--------------------------|-----------------------------|
| Head | Airbag bottomed out | 1 pt deduction |
| Chest | | No deduction |
| Upper leg | Variable & conc. loading | 2 pt deduction left & right |
| | Passenger | 2 pt deduction right |
| Lower leg | | No deduction |
| Foot score | | Score 4 points |



Modifiers - deductions from side impact test scores

| | |
|-------|--------------|
| Chest | No deduction |
|-------|--------------|

Safety features

These specifications are subject to change. Please check with manufacturer for the latest specifications.

| | | | |
|--|---|--|-----|
| Driver airbag | S | Antilock (ABS) brakes / Electronic brake distribution | S/S |
| Passenger front airbag | S | Electronic stability control (ESC, VSC, DSC, ESP, VSA) | X |
| Side airbags, front seats - chest protection | S | 3 point centre rear seat belt | S |
| Side airbags, front seats - head protection | S | Active head restraints - front seats | X |
| Side airbags, rear seats - head protection | S | Intelligent seat belt reminder - driver | S |
| Driver knee airbag | X | Intelligent seat belt reminder - front passenger | X* |
| Front seat belt pretensioners | S | Rear seat belt status indicator | X |

* European Civic Hybrid had a passenger seat belt reminder and earned an extra point.

Key:

S = standard on all variants

O = optional on base variant. May be standard on higher variants

V= not available on base variant but standard or optional on higher variants

X = not available on any variant