

# Crash Test Results

## New Car Safety

### HOLDEN WM STATESMAN & CAPRICE

Sept 2009 on Front+side+head airbags



Offset crash test at 64km/h (Commodore)

#### FRONTAL OFFSET CRASH TEST (v4.1)

Body region scores out of 4 points each: Head/neck 4 pts, chest 2.70 pts, upper legs 4 pts, lower legs 2.76 pts.

The passenger compartment held its shape very well in the offset crash test. The accelerator pedal moved rearwards by 7 mm and the brake pedal moved rearwards 4mm. The steering wheel hub moved forwards 59mm (as it was design to do, to reduce injury risk), downwards 61mm and sideways 17 mm. The front ("A") pillar moved 3 mm rearwards. All doors remained closed during the crash. After the crash all doors could be opened with normal effort. The airbag cushioned the head of the driver and contact was stable. There were no knee hazards with the revised steering column design. The passenger's head was cushioned by the airbag.

#### SIDE IMPACT CRASH TEST (v4.1)

Body region scores out of 4 points each: Head 4 pts, chest 4 pts, abdomen 4 pts, pelvis 4 pts.

The Commodore was eligible for an optional pole impact test, since it had head-protecting side airbags and it was within reach of a 5 star rating. The manufacturer decided to go ahead with the pole test and the vehicle earned a further two points.

#### PEDESTRIAN PROTECTION: 1 Star

The bonnet provided fair to marginal protection for many of the adult and child head zones. Leg results were uniformly poor, and performance could be improved in this area.



**Occupant Protection Score** 33.45 out of 37  
 Variant tested: Omega sedan Eng: 3.6 V6  
 Kerb weight: 1700 kg Category: CAR-LARGE  
 Vehicles built: 2006 and 2008

#### Model History and Safety Features

The Commodore sedan was tested by ANCAP in 2008. Holden provided evidence to ANCAP that Statesman and Caprice variants can be expected to provide comparable occupant protection to the Commodore. This 5-star ANCAP rating applies to all Statesman and Caprice variants built from 31 August 2009, when a passenger seat belt reminder is due to be introduced.


Dual front airbags, side airbags and head-protecting side curtains are standard equipment. Antilock brakes (ABS), electronic brakeforce distribution (EBD) and electronic stability control (ESC) are also standard. Advanced seat belt reminders are fitted to both front seats.

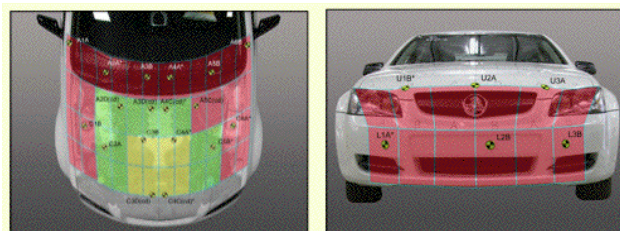
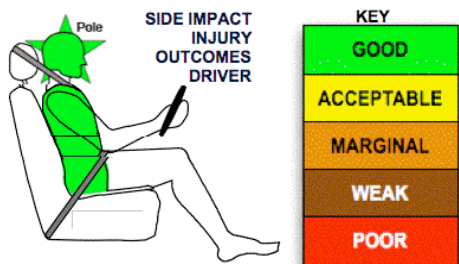
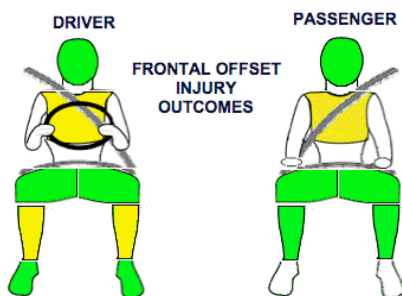
The front seat belt buckles are mounted on the seats and the upper anchorages are adjustable. These features improve the fit of the seat belt. Pretensioners are fitted to the front seat belts to reduce slack in the event of a crash. A three point seat belt is fitted to the centre rear seat. This provides better protection than a two point (lap) seat belt.

#### OCCUPANT PROTECTION: 5 Stars

The vehicle scored 13.45 out of 16 in the offset crash test. The passenger compartment held its shape very well. There was a slight risk of serious chest and lower leg injury for the driver.

The vehicle scored 16 out of 16 in the side impact crash test and a further 2 points in the optional pole test.

PEDESTRIAN PROTECTION		
 Rated ★ ★ ★ ★ ★ v4.1	Child head impacts	5.98
	Adult head impacts	3
	Upper leg impacts	Zero
	Lower leg impacts	Zero
	Total (out of 36)	8.98



Child and adult head impact

Adult leg impact (upper and full legforms)

fair marginal poor

August 2009

PO Box 4041  
 Manuka ACT 2603  
 statesman09.doc  
 Issued 6/8/2009



www.ancap.com.au

# TECHNICAL DATA - HOLDEN WM STATESMAN & CAPRICE

## INJURY MEASUREMENTS

Body region	Offset Crash Test at 64km/h (v4.1)		Side Impact Crash Test at 50km/h (v4.1)
	Driver	Passenger	Driver
<b>Head HIC</b>	314	221	25
Acceleration (g for 3ms)	45.1	36.8	16.2
<b>Neck - Shear (kN)</b>	0.49	0.43	-
Tension (kN)	0.82	0.91	-
Extension (Nm)	6.8	22.6	-
<b>Chest Accln (g for 3ms)</b>	38.100	35.800	-
Compression (mm)	31.13	28.73	20.50
Viscous criterion (m/s)	0.07	0.07	0.12
<b>Abdomen - Force (kN)</b>	-	-	0.561
<b>Pelvis - Force (kN)</b>	-	-	1.320
<b>Upper legs Force (kN)</b>			
Left	0.42	0.25	
Right	0.57	0.30	
<b>Knee displ (mm)</b>			
Left	0.27	0.67	
Right	0.13	0.29	
<b>Lower legs Force (kN)</b>			
Left	2.32	1.33	
Right	3.30	1.55	
<b>Index (Upper/Low)</b>			
Left	0.42 / 0.50	0.32 / 0.12	
Right	0.53 / 0.68	0.39 / 0.24	

### Bonus points (maximum 5)

Pole Test: 2 points

Seat belt reminders: 2 (see table below for details)

### Modifiers - deductions from offset test scores

Head No deduction  
 Chest No deduction  
 Upper leg Variable & conc. loading No deduction  
 Lower leg No deduction  
 Foot score Score 4 points

Note: Steering column and pedal movements are measured relative to the driver's seat.

### Modifiers - deductions from side impact test scores

Chest No deduction

### Safety features

These specifications are subject to change. Please check with manufacturer for the latest specifications.



Driver airbag	S	Antilock (ABS) brakes / Electronic brakeforce distribution / Brake Assist	S/S/S
Passenger front airbag	S	Electronic stability control (ESC, VSC, DSC, ESP, VSA)	S#
Side airbags, front seats - chest protection	S	3 point centre rear seat belt	S
Side airbags, front seats - head protection	S	Active head restraints - front seats	V
Side airbags, rear seats - head protection	S	Intelligent seat belt reminder - driver	S
Driver knee airbag	X	Intelligent seat belt reminder - front passenger	S@
Seat belt pretensioners (Front/rear outboard)	S/X	Rear seat belt status indicator	X

@ Front passenger seat belt reminder standard on Statesman/Caprice from 31 August 2009. This is needed for a 5-star rating.

Key:

S = standard on all variants

O = optional on base variant. May be standard on higher variants

V= not available on base variant but standard or optional on higher variants

X = not available on any variant

# ESC required by ANCAP for 5 star rating from 2008



**ANCAP**

Crash testing for safety

AUSTRALASIAN  
NEW CAR ASSESSMENT  
PROGRAM