

Crash Test Results

New Car Safety

HOLDEN CRUZE

2009 on

Front+side+head airbags



ANCAP

Rated ★★★★★

Occupant Protection

Occupant Protection Score 35.04 out of 37

Variant: CD sedan

Eng: 1.8 petrol manual

Kerb weight: 1380 kg

Category: CAR - SMALL

Vehicles built: 2009

Model History and Safety Features

The tested model of Holden Cruze was introduced in Australia during May 2009. This rating applies to all Cruze sedan and hatch variants, including diesel and petrol engines.

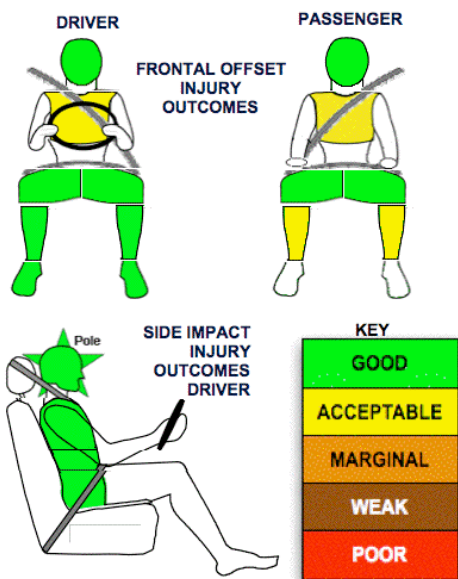
Dual front airbags, side airbags with chest and pelvis protection and head-protecting side curtains are standard equipment. Antilock brakes (ABS), electronic brake distribution (EBD), emergency brake assist and electronic stability control (ESC) are also standard. Advanced seat belt reminders are fitted to both front seats.

Dual pretensioners are fitted to the front seat belts to reduce slack in the event of a crash. A three point seat belt is fitted to the centre rear seat. This provides better protection than a two point (lap) seat belt.

OCCUPANT PROTECTION: 5 Stars

The Cruze scored 15.04 out of 16 in the offset crash test. The passenger compartment held its shape very well. There was a slight risk of serious chest injury for the driver and passenger.

The vehicle scored 16 out of 16 in the side impact crash test and a further two points in the optional pole test.



Offset crash test at 64km/h

FRONTAL OFFSET CRASH TEST (v4.1)

Body region scores out of 4 points each: Head/neck 4 pts, chest 3.13 pts, upper legs 4 pts, lower legs 3.91 pts.

The passenger compartment held its shape very well in the offset crash test. The brake pedal moved rearwards by 19 mm. The accelerator pedal moved upwards 6 mm. The steering wheel hub moved 66mm forward, 18mm downward and 5 mm sideways. The front ("A") pillar moved 4 mm rearwards. All doors remained closed during the crash. After the crash all doors could be opened with normal effort.

The airbag cushioned the head of the driver and contact was stable. There were no driver or passenger knee contacts. The passenger's head was cushioned by the airbag and contact was stable.

SIDE IMPACT CRASH TEST (v4.1)

Body region scores out of 4 points each: Head 4 pts, chest 4 pts, abdomen 4 pts, pelvis 4 pts.

The vehicle was eligible for an optional pole impact test, since it had head-protecting side airbags and it was within reach of a 5 star rating. The manufacturer decided to go ahead with the pole test and the vehicle earned a further two points.

PEDESTRIAN PROTECTION: Pending

May 2009

PO Box 4041

Manuka ACT 2603

cruze09.doc

Revised 29/09/2011



ANCAP

Crash testing for safety

AUSTRALASIAN
NEW CAR ASSESSMENT
PROGRAM

TECHNICAL DATA - HOLDEN CRUZE - 2009 on

INJURY MEASUREMENTS

Body region	Offset Crash Test at 64km/h (v4.1)		Side Impact Crash Test at 50km/h (v4.1)
	Driver	Passenger	Driver
Head HIC	399	482	48
Acceleration (g for 3ms)	44.9	55.5	23.8
Neck - Shear (kN)	1.01	0.84	-
Tension (kN)	0.90	0.74	-
Extension (Nm)	7.1	16.6	-
Chest Accln (g for 3ms)	41.2	36.9	-
Compression (mm)	28.10	24.70	17.30
Viscous criterion (m/s)	0.10	0.06	0.08
Abdomen - Force (kN)	-	-	0.498
Pelvis - Force (kN)	-	-	1.570
Upper legs Force (kN)			
Left	0.32	0.11	
Right	0.15	0.09	
Knee displ (mm)			
Left	0.83	0.67	
Right	0.24	1.61	
Lower legs Force (kN)			
Left	1.27	0.15	
Right	1.29	0.10	
Index (Upper/Low)			
Left	0.30 /0.22	0.32 /0.42	
Right	0.28 /0.15	0.41/0.13	

Bonus points (maximum 5)

Pole Test: 2 pts

Seat belt reminders: 2 (see table below for details)

Modifiers - deductions from offset test scores

Head	No deduction
Chest	No deduction
Upper leg Variable & conc. loading	No deduction
Lower leg	No deduction
Foot score	Score 4 points

Note: Steering column and pedal movements are measured relative to the driver's seat.

Modifiers - deductions from side impact test scores

Chest	No deduction
-------	--------------

Safety features

These specifications are subject to change. Please check with manufacturer for the latest specifications.



Driver airbag	S	Antilock (ABS) brakes / Electronic brake distribution / Brake Assist	S/S/S
Passenger front airbag	S	Electronic stability control (ESC, VSC, DSC, ESP, VSA)	S#
Side airbags, front seats - chest protection	S	3 point centre rear seat belt	S
Side airbags, front seats - head protection	S	Active head restraints - front seats	X
Side airbags, rear seats - head protection	S	Intelligent seat belt reminder - driver	S
Driver knee airbag	X	Intelligent seat belt reminder - front passenger	S
Seat belt pretensioners (Front/rear outboard)	S/X	Rear seat belt status indicator	X

Key:

S = standard on all variants

O = optional on base variant. May be standard on higher variants

V= not available on base variant but standard or optional on higher variants

X = not available on any variant

ESC required by ANCAP for 5 star rating from 2008



ANCAP

Crash testing for safety

AUSTRALASIAN
NEW CAR ASSESSMENT
PROGRAM