

Crash Test Results

New Car Safety

HOLDEN COMMODORE VE

2007 on

Dual front airbags



ANCAP Occupant Protection
Rated ★★★★★

Occupant Protection Score 27.45 out of 37

Variant: OMEGA SEDAN Eng: 3.6 V6

Kerb weight: 1700 kg Category: LARGE CAR

Vehicles built: 7/06 and 10/06

Model History and Safety Features

The tested model of Holden Commodore was introduced in Australia during 2006.

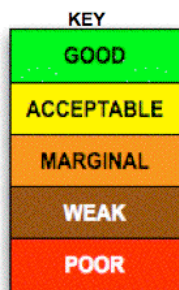
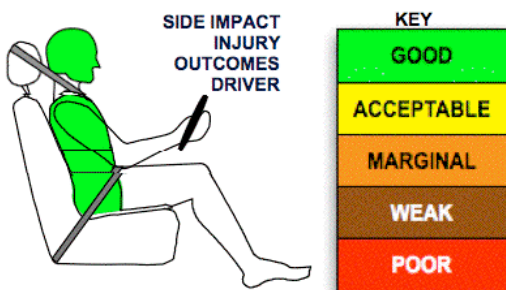
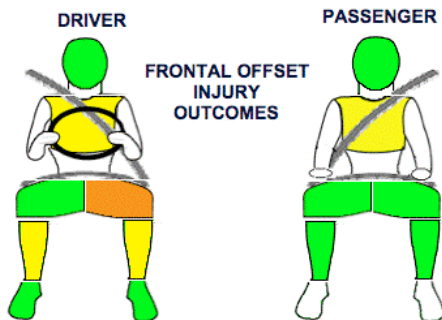
Dual front airbags are standard equipment. Antilock brakes (ABS), electronic brake distribution (EBD) and electronic stability control (ESC) are also standard. Side airbags and head-protecting side curtains are optional on the Omega variant and standard on other variants. An intelligent seat belt reminder is fitted to the driver's seat. All Commodores built from 2007 are eligible for a bonus point for this feature. Most Commodores built in 2006 were not eligible for this bonus point because the driver seat belt reminder did not fully meet the ANCAP protocol.

The front seat belt buckles are mounted on the seats and the upper anchorages are adjustable. These features improve the fit of the seat belt. Pre-tensioners are fitted to the front seat belts to reduce slack in the event of a crash. A three point seat belt is fitted to the centre rear seat. This provides better protection than a two point seat belt.

OCCUPANT PROTECTION: 4 Stars

The HOLDEN COMMODORE scored 11.45 out of 16 in the offset crash test. The passenger compartment held its shape very well. Protection from serious leg injury was marginal for the driver.

The vehicle scored 15 out of 16 in the side impact crash test. All injury values were good but a point was lost because a rear door opened during the crash.



Offset crash test at 64km/h

FRONTAL OFFSET CRASH TEST (v4.1)

Body region scores out of 4 points each: Head/neck 4 pts, chest 2.70 pts, upper legs 2 pts, lower legs 2.76 pts.

The passenger compartment held its shape very well in the offset crash test. The accelerator pedal moved rearwards by 7 mm and the brake pedal moved rearwards 4mm. The steering wheel hub moved forwards 59mm, downwards 61mm and sideways 17 mm. The front ("A") pillar moved 3 mm rearwards. All doors remained closed during the crash. After the crash all doors could be opened with normal effort.

The airbag cushioned the head of the driver and contact was stable. Steering column components were a potential source of injury for the driver's knees. The passenger's head was cushioned by the airbag.

SIDE IMPACT CRASH TEST (v4.1)

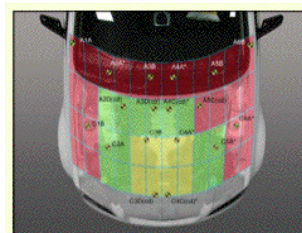
Body region scores out of 4 points each: Head 4 pts, chest 4 pts, abdomen 4 pts, pelvis 4 pts.

During the crash the rear door on the struck side opened slightly. This resulted in a one point deduction from the side impact score.

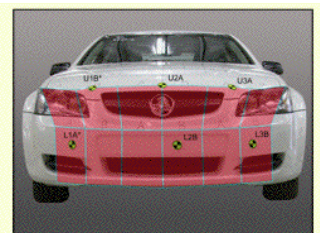
The vehicle was not eligible for a Pole Impact Test since it did not have head-protecting side airbags. This test can earn eligible vehicles an extra two points.

PEDESTRIAN PROTECTION RATING (v4.1)

PEDESTRIAN PROTECTION		
<p>Rated ★★★★★</p>	Child head impacts	5.98
	Adult head impacts	3
	Upper leg impacts	Zero
	Lower leg impacts	Zero
	Total (out of 36)	8.98



Child and adult head impact



Adult leg impact (upper and full legforms)

fair marginal poor

June 2007

PO Box 1555
Canberra ACT
Australia 2601
commodore07.doc
Issued 7/6/07



ANCAP
Crash testing for safety
AUSTRALASIAN
NEW CAR ASSESSMENT
PROGRAM

TECHNICAL DATA - HOLDEN COMMODORE - 2007 on

INJURY MEASUREMENTS

Body region	Offset Crash Test at 64km/h (v4.1)		Side Impact Crash Test at 50km/h (v4.1)
	Driver	Passenger	Driver
Head HIC	314	221	49
Acceleration (g for 3ms)	45.1	36.8	30.6
Neck - Shear (kN)	0.49	0.43	-
Tension (kN)	0.82	0.91	-
Extension (Nm)	6.8	22.6	-
Chest Accln (g for 3ms)	38.10	35.80	-
Compression (mm)	31.13	28.73	16.60
Viscous criterion (m/s)	0.07	0.07	0.07
Abdomen - Force (kN)	-	-	0.530
Pelvis - Force (kN)	-	-	1.370
Upper legs Force			
(kN) Left	0.42	0.25	
(kN) Right	0.57	0.30	
Knee displ (mm) Left	0.27	0.67	
Knee displ (mm) Right	0.13	0.29	
Lower legs Force			
(kN) Left	2.32	1.33	
(kN) Right	3.30	1.55	
Index (Upper/Low) Left	0.42 /0.50	0.32 /0.12	
Index (Upper/Low) Right	0.53 /0.68	0.39/0.24	

Bonus points (maximum 5)

Pole Test: Not eligible due to a lack of head-protecting side airbags

Seat belt reminders: 1 (for all Commodores built from 2007)

Modifiers - deductions from offset test scores

Head No deduction
 Chest No deduction
 Upper leg Variable & concentrated loading 2 pt deduction Left
 Lower leg No deduction
 Foot score Score 4 points
 Note: Steering column and pedal movements are measured relative to the driver's seat.

Modifiers - deductions from side impact test scores

Chest No deduction
 Door opened during crash 1 pt deduction

Safety features

These specifications are subject to change. Please check with manufacturer for the latest specifications.



Feature	Availability	Description	Rating
Driver airbag	S	Antilock (ABS) brakes / Electronic brake distribution	S / S
Passenger front airbag	S	Electronic stability control (ESC, VSC, DSC, ESP, VSA)	S
Side airbags, front seats - chest protection	O	3 point centre rear seat belt	S
Side airbags, front seats - head protection	O	Active head restraints - front seats	O
Side airbags, rear seats - head protection	O	Intelligent seat belt reminder - driver	S
Driver knee airbag	X	Intelligent seat belt reminder - front passenger	X
Front seat belt pretensioners	S	Rear seat belt status indicator	X

Key:

S = standard on all variants

O = optional on base variant. May be standard on higher variants

V= not available on base variant but standard or optional on higher variants

X = not available on any variant