

ANCAP Safety Rating

HOLDEN COMMODORE VF UTE

(from mid 2013)



Test Vehicle(s).

| | |
|--------------------------------|---------------------------------------|
| Variant(s): | Evoke wagon / SV6 sedan / Evoke sedan |
| Kerb Mass: | 1735 kg |
| Built: | 2013 |
| Engine: | 3.6 petrol |
| Category: | Utility |
| Variant Applicability*: | All utilities |

This rating is based on ANCAP tests of the Commodore sedan and wagon. ANCAP was provided with information which showed that the results also apply to the Commodore Ute.



Frontal offset test at 64 km/h (Commodore wagon)

| Airbags | ESC | Frontal Offset | Side Impact | Pole | Whiplash | Pedestrian | Seat Belt Reminders | Overall Score | ANCAP Safety Rating |
|-----------------------|----------|-----------------------------|-----------------------------|------------------------|-------------|-----------------|------------------------|-----------------------------|---------------------|
| Frontal + Side + Head | Standard | 14.06 (out of 16) | 16.00 (out of 16) | 2 (out of 2) | GOOD | MARGINAL | 2 (out of 2) | 34.06 (out of 37) | ★★★★★ |

OCCUPANT PROTECTION

The Holden Commodore VF Ute was introduced in Australia and New Zealand in 2013. This ANCAP safety rating applies to all utility variants.

Dual frontal, side chest and side head airbags (curtains) are standard. Antilock brakes (ABS), electronic brake distribution (EBD) and electronic stability control (ESC) are also standard. Advanced seat belt reminders are fitted to all seats.

In the frontal offset crash test driver chest and leg protection was acceptable. Passenger leg protection was also acceptable. All other injury results were good in this test and in the side impact test. Head protection in the side pole test was good.

Frontal Offset Test.

Each body region is scored out of 4 points

| | |
|--------------|-------------|
| Head / neck: | 4.00 points |
| Chest: | 2.95 points |
| Upper legs: | 4.00 points |
| Lower legs: | 3.11 points |

The passenger compartment held its shape well in the frontal offset test. Pedal and steering wheel displacements were well controlled. Driver and passenger contact with the airbags was stable. All doors remained closed during the crash. After the crash all doors could be opened with normal effort.

Side Impact Test.

Each body region is scored out of 4 points

| | |
|----------|-------------|
| Head: | 4.00 points |
| Chest: | 4.00 points |
| Abdomen: | 4.00 points |
| Pelvis: | 4.00 points |

Good protection was provided for the driver in the side impact test. The side airbags included pelvis protection and performed well.

Pole Test.

Scored out of 2 points

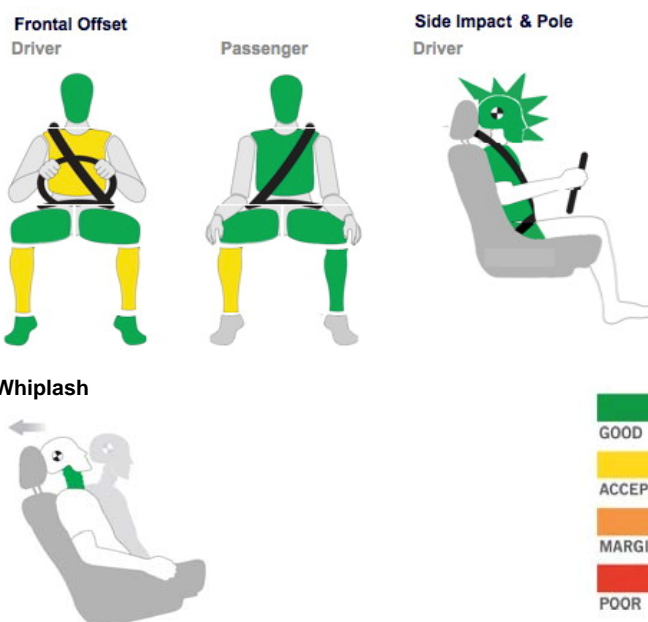
The vehicle was eligible for a side pole test because it has side curtain airbags. The vehicle scored the maximum 2 points for head protection in this test.

Whiplash Protection Test.

Whiplash protection is assessed to the RCAR Protocol

| | |
|-----------------|------|
| Geometric test: | Good |
| Dynamic test: | Good |

Injury Outcomes.



ANCAP Safety Rating

HOLDEN COMMODORE VF UTE

(from mid 2013)



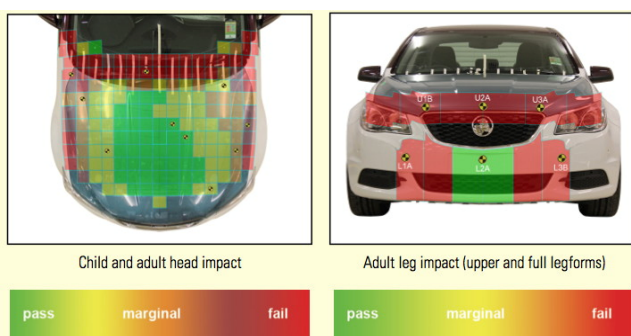
PEDESTRIAN PROTECTION

Pedestrian Test.

MARGINAL - Scored 15.41 out of 36 points

Child head impacts: 7.69 points
 Adult head impacts: 5.72 points
 Upper leg impacts: 0.00 points
 Lower leg impacts: 2.00 points

The pedestrian protection performance of the Commodore has improved over previous models, however many improvements could still be made. (v6.0)



Holden Commodore VF Ute

SAFETY FEATURES

These specifications are subject to change. Please check with manufacturer for the latest specifications. For a description of these safety features and safety rating requirements see the ANCAP Road Map.

| Safety Assist Technology (SAT) | Availability |
|---|--------------|
| Front airbag - driver | S |
| Front airbag - passenger | S |
| Side airbags (chest protection) - front seats | S |
| Side airbags (head protection) - front seats | S |
| Side airbags (head protection) - 2nd row seats | N/A |
| Knee airbag - driver | X |
| Three-point seat belts for all forward facing seats | S |
| Seat belt pretensioners (front / rear outboard) | S / X |
| Intelligent seat belt reminder - driver | S |
| Intelligent seat belt reminder - front passenger | S |
| Intelligent seat belt reminder - 2nd row seats | N/A |
| Head restraints for all seats | S |
| Antilock brakes (ABS) | S |
| Electronic brake distribution (EBD) | S |
| Emergency brake assist (EBA) | S |
| Electronic data recorder (EDR) | S |
| Electronic stability control (ESC) | S |
| Adaptive cruise control (ACC) | X |
| Autonomous emergency braking (AEB) | X |
| Lane support system | V |
| Automatic headlights | S |
| Emergency stop signal | S |
| Reversing collision avoidance | S |
| Hill launch assist | S |
| Manual speed alarm | S |
| Trailer stability control | S |
| Blind spot monitoring | O |
| Daytime running lights | V |
| Following distance warning | V |

S = Standard on all variants.
 O = Optional on base variant. May be standard on higher variants.
 V = Not available on base variant but standard or optional on higher variants.
 X = Not available on any variant.

ANCAP Safety Rating
HOLDEN COMMODORE VF UTE
 (from mid 2013)



INJURY MEASUREMENTS

| Body Region | Frontal offset test at 64 km/h (v5.1) | | Side impact test at 50 km/h (v5.1) |
|------------------------------|--|-------------|---------------------------------------|
| | Driver | Passenger | Driver |
| Head | | | |
| HIC | 167.00 | 159.00 | 25.00 |
| Acceleration (g for 3ms) | 33.50 | 31.60 | 16.30 |
| Neck | | | |
| Shear (kN) | 0.53 | 0.50 | - |
| Tension (kN) | 0.83 | 0.47 | - |
| Extension (Nm) | 6.60 | 21.40 | - |
| Chest | | | |
| Acceleration (g for 3ms) | | | - |
| Compression (mm) | 29.35 | 17.90 | 14.40 |
| Viscous criterion (m/s) | 0.08 | 0.05 | 0.08 |
| Abdomen | | | |
| Force (kN) | - | - | 0.30 |
| Pelvis | | | |
| Force (kN) | - | - | 1.25 |
| Upper legs | | | |
| Femur force left (kN) | 0.33 | 0.28 | |
| Femur force right (kN) | 0.18 | 0.27 | |
| Knee displacement left (mm) | 0.22 | 0.38 | |
| Knee displacement right (mm) | 0.44 | 0.30 | |
| Lower legs | | | |
| Force left (kN) | 1.90 | 1.33 | |
| Force right (kN) | 2.07 | 2.12 | |
| Index (upper / lower) left | 0.45 / 0.60 | 0.28 / 0.16 | |
| Index (upper / lower) right | 0.35 / 0.29 | 0.39 / 0.18 | |

INTRUSION MEASUREMENTS

Steering Column

| | |
|------------|------|
| Forwards: | 50mm |
| Downwards: | 2mm |
| Sideways: | 5mm |

Pedals

| | |
|----------------------|------|
| Brake (rearwards): | 13mm |
| Brake (upwards): | 7mm |
| A-Pillar (forwards): | 3mm |

Note: Steering column and pedal movements are measured relative to the driver's seat.

SCORE DEDUCTIONS

Deductions from frontal offset test scores

No deductions for frontal offset test.

Deductions from side impact test score

No deductions for side impact test.

Deductions from pole test score

No deductions for pole test.

* For information about the application of ANCAP ratings to model variants see the ANCAP Variant Policy. In brief, ratings do not automatically extend to variants that have different body styles, engine configurations, driven wheels or occupant restraint systems (e.g. fewer airbags). In these cases ANCAP considers technical evidence submitted by manufacturers before deciding on extending a rating to additional variants of a model.

^ Refer ANCAP Rating Road Map (www.ancap.com.au/media).

DOCUMENT REF: COMMODORE13
 CREATED / REVISED: 10/5/2013

